

# WOODMOOD



wood is sustainable, let's sustain wood



Berti.net



WITH  
**BERTI**

Tartan Wood Green



SIGNATURE  
Rovere Cashmere | Spina 52 larga  
**woodco.it**

**WOODCO**<sup>®</sup>  
STORIE DI PARQUET, DAL 1983.



B r e a t h e   O b s e r v e   L i s t e n   E x p l o r e

Feel the woods



**Biocompatible wood floors.**

Go beyond the surface and immerse yourself in a multisensory beauty that satisfies the senses and brings wellbeing to both body and mind.

Luci di Fiemme | Dolcerivo







## VERTICAL BONDING OF DECORATIVE PANELS

For the installation of decorative panels on interior walls, it is essential to use professional adhesives that ensure a **strong and long-lasting bond, while also preserving surfaces, with no need for drilling** Chimiver products are ideal for streamlining any renovation project, delivering **excellent performance on all types of panels and surfaces**.



ADESIVER RE MS: STRONG. SAFE. NO DRILLING.

Suitable for **bonding LVT, SPC, and rigid LVT on walls** and floors. Also ideal for installing all types of resilient coverings (rolled PVC).



CHIMIVER PANSERI S.p.A.

Pontida (BG) | Italy @ info@chimiver.com chimiver.com

# STIL ARTWALL

VERTICAL WOOD DESIGN



Art and technology, an apparently paradoxical combination, but both instead continue to meet and enhance the unique result that arises from it. The possibility to engrave every single board like a piece of a puzzle and which is therefore only a piece of a much larger design, makes it adaptable to all vertical surfaces, for all spaces.

STIL  
ARTWALL

100% made in Italy since 1965

www.stile.com





THE NEW EXTENSION

# LIFTER ALWAYS AT THE HEIGHT

The new Lifter extension is the solution designed to adapt to every need during installation. Thanks to the patented locking system, the extensions can be easily assembled, offering a customizable height. Perfect for solving unexpected problems, it guarantees stability and precision until the desired height is reached.

→ 10 MM

→ 30 MM

→ 70 MM

LIFTER IS AVAILABLE  
IN 3 VERSIONS STACKABLE  
WITH EACH OTHER AND  
ALLOWS YOU TO REACH  
ANY HEIGHT  
WITH PRECISION

AVAILABLE FOR  
**SPECIAL EVOLVE** AND **SPECIAL LIGHT**



DISCOVER HOW  
LIFTER WORKS



**CERSAIE**  
Bologna - Italy

**STAND B16  
HALL 19**

22 / 26 - 09 - 2025



italprofili.com  
info@italprofili.com

**ITALPROFILI**  
RESISTANT TO TIME



STAR  
Rovere Cream | Spina 45  
**woodco.it**

**WOODCO**  
STORIE DI PARQUET, DAL 1983.





## CUSTOMIZED WALL & CEILING PANELS

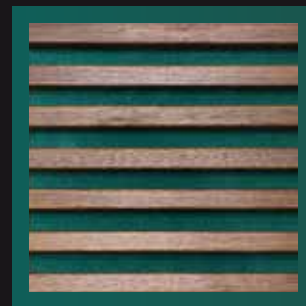


Perfect for residential, commercial, or cultural spaces – creating atmosphere and improving acoustics.  
YOUR project, YOUR vision – we provide the panels without limits.

Surfaces & colors without limits.



50+ real wood veneers



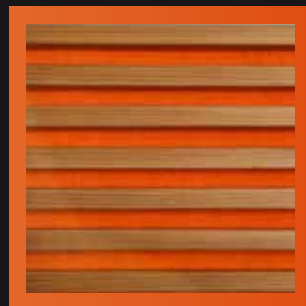
with 1,000+ décor options



easy to install



individual appearance



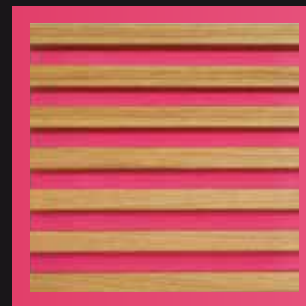
3-sided wrapped



acoustically optimized



durable



project-specific fit



up to 4m length



lightweight



functional & elegant



enhances dwell time

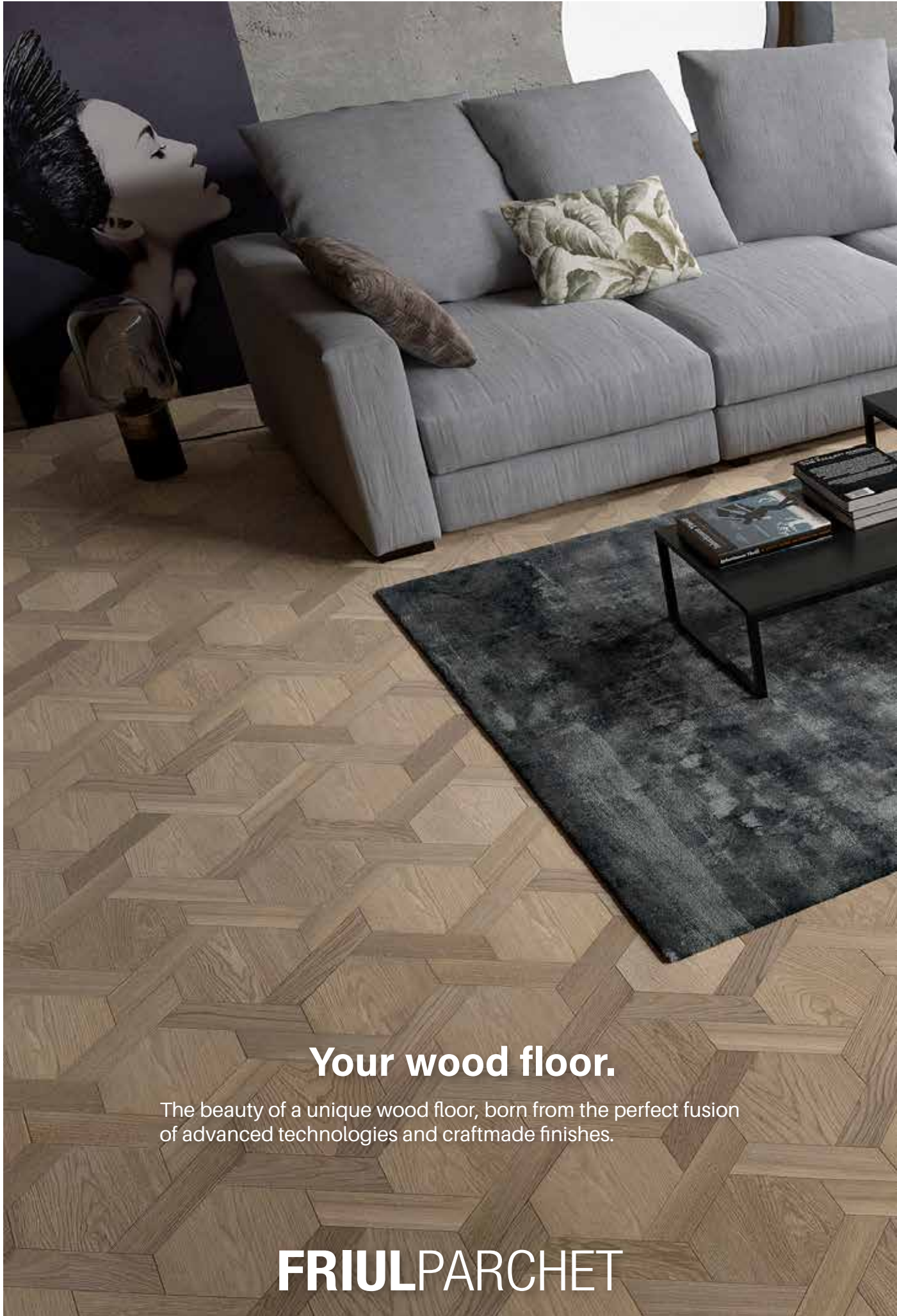
WOOD  
FLOORING

# SPINACOLLECTION



NEGRINI/MASSIMO





## Your wood floor.

The beauty of a unique wood floor, born from the perfect fusion of advanced technologies and craftmade finishes.

# FRIULPARCHET

[www.friulparchet.it](http://www.friulparchet.it)



COVER BY  
Berti  
[berti.net](http://berti.net)

**Editor**  
4PUNTOZERO Srl  
Via Sapeto 7 - Milano  
Tel. +39 320 6261241  
[info@4puntozero.it](mailto:info@4puntozero.it)

**Editor in chief**  
Federica Fiorellini  
[f.fiorellini@4puntozero.it](mailto:f.fiorellini@4puntozero.it)

**Editorial staff**  
Anna Baroni, Fabio Braga,  
Gianni Cantarutti, Francesca Ferrari,  
Tito Franceschini, Chiara Merlini,  
Michele Murgolo, Stiven Tamai

**Layout**  
Alessandra Miglizza  
[miglizzaalessandra@gmail.com](mailto:miglizzaalessandra@gmail.com)

**Advertisement Director**  
Luciano Dorini  
[dorini@4puntozero.it](mailto:dorini@4puntozero.it)

Roberta Basaglia  
[roberta.basaglia@4puntozero.it](mailto:roberta.basaglia@4puntozero.it)

**Secretary**  
Jacqueline Davis  
[segreteria@4puntozero.it](mailto:segreteria@4puntozero.it)



4puntozero srl, the authorised processor of data of those receiving this publication, points out that the purposes of such processing make it possible for this magazine and/or others it publishes to be sent which is to facilitate the update of technical information. Copyright for all material published in I Love Parquet International remains with 4puntozero srl

Supplement to I LOVE PARQUET Magazine  
N. 70, July 2025

## I LOVE PARQUET

### Contents

- 15 Editorial - Federica Fiorellini
- 18 Agenda
- 24 Wood Inspiration // Quick-Step
- 28 Wood Inspiration // Impertek
- 30 Wood Inspiration // Itlas
- 34 Wood Inspiration // Meg Trading
- 36 Between minimalism and refinement - Francesca Ferrari
- 44 Wood Inspiration // Berti
- 48 Wood Inspiration // Italprofili
- 50 Total Wood in Cortina - Francesca Ferrari
- 58 F+C House - Tito Franceschini
- 66 A refuge of light and style - Francesca Ferrari
- 72 Casa B + LP: between materiality and light - Francesca Ferrari
- 80 Memory on stage - Francesca Ferrari
- 88 Natural glamour: Focus on Key Players





# Lumbertech

Endures the world. Surrenders to your style.

Now with 5G.



# SKEMA

## The New Words of Parquet (What's changed? Love)

**FEDERICA FIORELLINI**



A few days ago, Renza Altoè Garbelotto asked me - with the simplicity that comes with truly important questions - "What are the words of parquet today? How has the way we tell its story changed?" I've been thinking about it. A lot. I thought back to when, fresh out of university, I would timidly step over the threshold of a technical publishing house. My very first assignment was to read and "edit" - to understand, trim, and harmonize the articles written by our contributors. Edging, banding, wide planks, two-layer, solid parquet, primer, smoothing compound, straight grain, flame grain, first and second grade, hardness, dimensional stability... And then merbau, doussié, afrormosia, iroko. Back then, wooden floors were described like this: measurements, wood species, technical and performance features, installation patterns and systems. I read those words with a certain awe. More often than not, I'd have to ask a colleague to translate them for me. I was stepping into a precise world, built on craftsmanship and industry. I knew that behind it all were skills, technology - and expert hands. Almost thirty years have gone by. Ten years ago, this magazine was born. It came out of a major shift: construction

was changing, the way people bought things was changing, the role of technical publishing was changing - the whole world was changing. And I had to change with it, to rethink my role as a specialist journalist. I learned to listen more than I explained. To tell stories more than I defined. So, what are the words of parquet today? They're words that speak of emotion - because wood is never chosen with the mind alone. We've understood that now. They're words that awaken all five senses. They're words that speak of care, of quiet, of mindful choices. They're words that speak of the circular economy - because what comes from nature can, if crafted with intelligence, return to nature without waste. They're words that speak of carbon storage and sustainability - because every plank of wood carries within it a responsibility to the planet. And they're words that speak of beauty. Not fleeting beauty, but the kind the ancient Greeks linked to goodness: what is beautiful is also good, just, and lasting. And finally, they're words that speak of joy - because there's nothing more beautiful than coming home, taking off your shoes, and feeling the living warmth of wood beneath your feet. Today, telling the story of parquet isn't just about describing it. It's about making people fall in love with it. That's what has changed. If we want it to become a lovemark, we have to change our language. We have to find a way to say all the things a technical sheet can never hold. And maybe, today more than ever, that's the most beautiful part of my work. And of yours.



THE SAFE ADHESIVE THAT ENHANCES  
THE BEAUTY OF WOODEN FLOORING.



EVERYTHING'S OK  
WITH **MAPEI**

Learn more on [mapei.com](https://mapei.com)

**Ultrabond Eco S948 1K** is a one-component adhesive suitable for installing multi-layered wooden flooring and medium-sized solid wood. Solvent-free and with very low VOC emissions, it complies with UNI 11864 standard guaranteeing reliable bonding and durability. Also available in a 2x7 kg packaging.





## ME 2024

Fieramilano (Rho)  
19 - 22 November 2025  
[madeexpo.it](http://madeexpo.it)



## MADE EXPO 2025 LAUNCHES SUSTAINABILITY PRIZE

The 2025 edition of MADE Expo, taking place from November 19 to 22 at Fiera Milano (Italy), marks another significant step forward in promoting innovation and sustainability in the construction and architecture sectors. One of this year's key highlights is the launch of the MADE Sustainability Prize, a prestigious award created in collaboration with Politecnico di Milano, exclusively for MADE Expo. The prize will recognize exhibiting companies that stand out

for their innovative and sustainable solutions in design and construction. The MADE Sustainability Prize aligns with the principles of the New European Bauhaus (NEB), the European Commission initiative that promotes a new vision of the built environment based on sustainability, beauty, and inclusiveness. The award aims to celebrate companies shaping the future of architecture, by honoring the products and services showcased at MADE Expo 2025 that best embody these three pillars. The winners will make a tangible contribution to ecological transition, technological innovation, and quality of life in urban and architectural spaces.

## SALONE DEL MOBILE. MILANO

Fieramilano Rho  
21 - 26 April 2026  
[salonemilano.it](http://salonemilano.it)



## SALONE DEL MOBILE 2026: THE GLOBAL STAGE FOR DESIGN INNOVATION

The 2026 Salone del Mobile is back as the star of the design calendar: the leading international event for the design industry will be held from 21st to 26th April, at Milan's Rho Fiera fairgrounds. Set up in 1961, the trade fair boasts a wide range of furnishing products, distinguished by their expressive power and their functional, technological and material innovation, devised to enhance the domestic scene. Ingenuity, vision, innovation, sustainable excellence and emotion make up the familiar lexicon of the companies and brands that exhibit at the Salone Internazionale del

Mobile, which has now been proved to be increasingly more global, inclusive and in dialogue with the entire creative and productive furnishing system. Each year, the trade fair gives shape to its mission as a laboratory of experimentation and cross-pollination, a place to meet, to interface and create new business opportunities. It is here that prototypes and innovations in terms of furnishings, domestic spaces and lifestyles are presented: bedrooms, living and dining areas, entrance corridors and service areas, outdoor spaces with their furniture and cupboards, upholstereds, tables and chairs set the scene for a narrative that starts with this room, exploring how the way we live is changing and, consequently, home living and furnishing.



Noblesse® Herringbone, pickled Moka oak

WOODEN WAVES

CLIP UP  
SYSTEM



GARBELOTTO

NEW OPENING  
GARBELOTTO SHOWROOM MILANO - VIA UGO BASSI, 7 - MILAN, ITALY



GARBELOTTO1950.IT







ITALPARCHETTI

Via Aleardo Aleardi, 77  
31029 VITTORIO VENETO (TV)

Tel. 0438 500 939  
Tel. 0438 501 464  
Fax 0438 501 461

info@italparchetti.it  
www.italparchetti.it

MADE IN ITALY

## Magnetik Floor

**Innovation & Beauty  
100% Italian Wood Flooring**

Magnetik Floor  
is a trademark of Legno Tecnica s.r.l.  
31013 Cimetta di Codognè (TV) - Italia  
Tel. + 39 0438 791759  
info@legnotecnica.it - legnotecnica.it

## ASSITO DELLE ALPI

The Assito delle Alpi collection is Italparchetti's flagship range: it is a large prefinished plywood product that is 15 mm thick and suitable for laying on floors with underfloor heating. Assito delle Alpi consists of a layer of top-quality solid wood glued onto birch multiply; this combination is stable and easy to lay, even on floating floors. Its finish with water-based varnishes and natural oils makes this a very strong and healthy parquet floor. The different widths and lengths available offer multiple solutions so you can adapt your flooring to the style of your home.

ASSITO DELLE ALPI | Teak - premium - Brushed UV oil finish

Arch. Lino Restucci  
Studio Progetti Interior Design





Elevate your point of view

PEDESTAL LINE:  
GRAVITYSYSTEM

CERSAIE (22 - 26/09/2025) BOLOGNA - HALL 19 | STAND B33

[impertek.com](https://impertek.com)

Style and elegance.  
At the highest level.

RVL Itauba by Ravaioli Exotic Collection,  
for a designer terrace in Torre Solaria, Milan.

Ravaioli Legnami: wooden, bamboo and WPC  
solutions for outdoor decking and cladding.

A world of quality and natural design.

Project by Studio Marco Piva | Photo: Andrea Martiradonna | Graphic design: Ploiprogetto.it



[ravaiolilegnami.com](https://ravaiolilegnami.com)







**QUICK-STEP**

The Quick-Step DNA? Constantly striving for perfection. Quick-Step creates floors with enduring beauty for every space in life. Ongoing research and innovation along with a strong focus on quality have made Quick-Step one of the top players in the flooring industry. The brand, known for its patented glueless Uniclic® installation system, perfectly combines tradition with a series of ground-breaking innovations. Our trademarks: beautiful designs, waterproof floors, and easy installation: carefree living starts in a home with high-performance floors.

◀ **QUICK-STEP. THE REFINED FLOORING SOLUTION FOR EVERY INTERIOR**

*The Cala collection combines elegance and performance in a watertight flooring range designed to enhance any room, including areas prone to moisture such as kitchens and bathrooms. The genuine wood surface offers tactile warmth, exceptional resilience, and low-maintenance care, meeting the demands of modern living. An innovative surface treatment seals the entire plank, including its deepest textures, creating a protective barrier against moisture and dirt. This ensures effortless cleaning while keeping the wood vibrant and unaffected by daily wear. A refined click system provides a seamless, secure connection along all edges. Hydroseal technology, applied to all four sides, delivers superior protection against water infiltration, safeguarding the subfloor and extending the flooring's lifespan.*

**quick-step.it**





# THE POWER OF EVOLUTION

Bona Mega EVO™ – Faster, better and safer floor surfaces

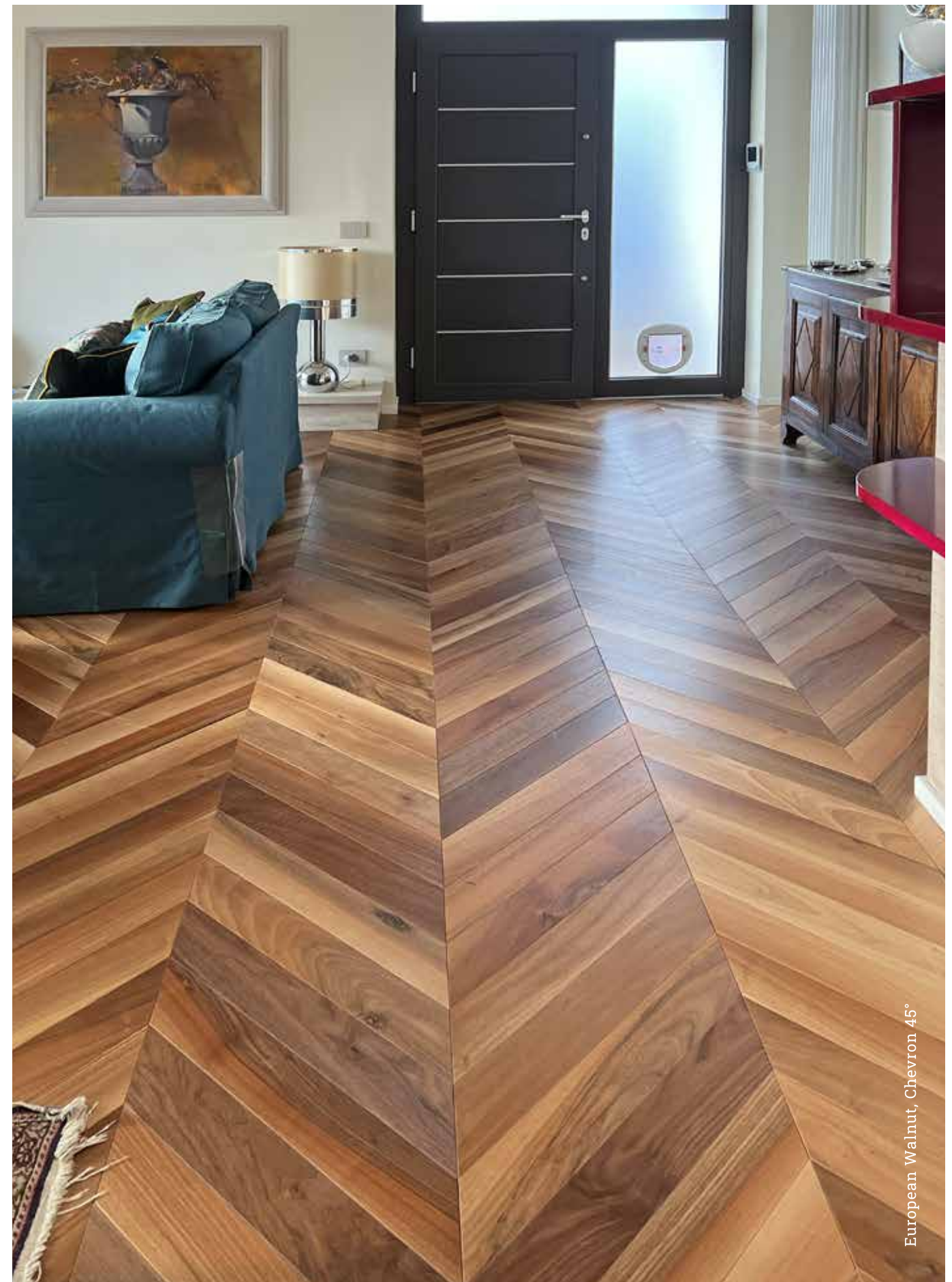
Bona introduces Bona Mega EVO™, the next generation lacquer with a new state-of-the-art crosslinking technology that activates when applied. The unique, non-yellowing formula delivers faster curing with excellent resistance to scratches, wear, and chemicals. With VOC levels below 3%, the lacquer contributes to healthier working conditions with a lower impact on indoor air quality.

Try the new step for medium wear wood floors, try Bona Mega EVO™

[bona.biffignandi.it/prodotto/bona-mega-evo](http://bona.biffignandi.it/prodotto/bona-mega-evo)

**Bona**®

[www.almafloor.it](http://www.almafloor.it)



European Walnut, Chevron 45°

Giorio srl

Via San Martino Nisocco 2, 12046 Montà (CN) Italia  
[info@almafloor.it](mailto:info@almafloor.it) - Tel +39 0173 976520

**Alma**   
Giorio® pavimenti in legno





## IMPERTEK

For 40 years, Impertek has been a key player in the construction industry, specializing in the design, production and distribution of waterproofing components and supports for outdoor raised flooring. Manufactured entirely in Italy and exported worldwide, Impertek products are renowned for their innovation, quality, and ease of use. These strengths are further enhanced by professional customer service, supporting clients throughout both the design and implementation phases.

### ◀ MINIPRO BY IMPERTEK: MINI SIZE, PRO PERFORMANCE

*MiniPro is the Impertek support for outdoor raised floors, designed with a single head suitable for both ceramic and stone tiles as well as decking. With an adjustable height range from 25 to 50 mm, it adapts seamlessly to any type of project and flooring, always ensuring flawless results. What truly sets MiniPro apart is the exclusive QuickOn head system, which allows for effortless installation of ceramic tiles, stone slabs, and decking with the RailSystem. The head is designed for quick and easy hooking of aluminium joists, without additional fixings and with maximum installation stability.*

**[impertek.com](https://www.impertek.com)**





WOOD  
inspiration

## ITLAS

Itlas Srl Società Benefit is one of the most important Italian companies in the production and marketing of pre-finished wooden floors. It is based in Cordignano, in the province of Treviso. Innovation and respect for the environment are at the heart of the ITLAS project, whose commitment to sustainability begins with the choice of wood as a raw material, sourced from forests managed in a sustainable manner.

### ◀ PROGETTO BAGNO

*Progetto Bagno was born out of the idea of a home completely designed on the raw material which Itlas has always put at the core of its activity - the wood. Different wood species and natural finishes, employed in every space, become main characters even in the design of the bathroom.*

*In photo: Progetto Bagno Mod. Isola Light. Top back and internal drawer in glossy lacquered LC01 White Itlas finish, Itlas smoked glass washbasins, Itlas Canaletto Walnut wood back and bottom, Itlas Slimline JEE-O wall-mounted faucets, Itlas Tondo container mirrors, Itlas Le Righe Maxi oak panelling, Itlas Tavole del Piave oak Murano collection wood flooring.*

[itlas.com](https://www.itlas.com)



# KALEIDOS

Skirting Boards in line with the latest architecture and interior design trends.



## FAMILY<sup>®</sup> GREEN WOOD FLOORS

**Family** is the new generation natural floor, **produced entirely in Italy**, resistant, comfortable and pet friendly.

Composed of a surface layer of oak, a core of birch plywood and a base of cork, natural materials that reduce noise and ensure well-being and health.

It is not a laminate or stone floor that tries to imitate wood, but real natural wood.

Quick to install even on existing floors and equipped with floor heating.

Resistant to treading pressure and scratches.



REAL WOOD



HIGH RESISTANCE



LOW THICKNESS

[familywoodfloors.com](http://familywoodfloors.com)

A product of  
**FLORIAN**  
*feeling wood*



DOWNLOAD CATALOGUE





## MEG TRADING

MEG Trading is an Italian company founded in 2016 by Andrea Rota, specializing in the design of flooring and wall coverings for homes, offices, commercial spaces, and the hospitality sector. In just a few years, it has gained solid experience in the wood industry, developing in-depth expertise and a unique knowledge of materials.

The company carefully selects, on an international scale, the finest collections of wooden floors, laminates, SPC, and decorative panels, offering the Italian market solutions of outstanding aesthetic and qualitative value.

For its most demanding clients, MEG Trading also provides an artisanal workshop dedicated to the creation of custom-made parquet, with personalized finishes and details.

### ◀ SMOKED OAK HERRINGBONE PARQUET IN THE HEART OF ROME

*In the renovation of a historic building in Rome, architect Fabio Nucciarelli and interior designer Claudia Del Bianco chose to make an Italian smoked oak herringbone parquet by Meg Trading the true focal point.*

*This laying pattern, one of the most elegant and iconic, has for centuries been a symbol of refinement and tradition, bringing warmth to interiors and evoking the charm of historic residences. The planks, laid at right angles, form a zigzag motif that adds both style and structure to the space.*

*In this project, the parquet is paired with white marble featuring black veining, creating a striking material and chromatic contrast in which the wood softens the marble's formal elegance, achieving a perfectly balanced and timeless result.*

*Credits: Arch. Fabio Nucciarelli - Designer Claudia Del Bianco (Civico 16 home design).*

**megtrading.it**



# Between Minimalism and Refinement

In the heart of Como, an apartment renovated with natural materials and meticulous attention to detail becomes a haven of calm and beauty, where wood takes center stage in a sustainable and sophisticated living concept

FRANCESCA FERRARI

*The French herringbone pattern adds movement to the interiors, perfectly dressing the large spaces of this residence.*



In Como's historic center, among elegant buildings and rare urban views, lies an apartment with nature at its core. Crossing its threshold is not just a physical act, but an emotional passage: one step is enough to enter a different world, where time slows and calm takes over.

The owners, deeply committed to a more authentic and sustainable lifestyle, wanted to transform their home into a retreat away from the city's noise, through a renovation guided by environmental sensitivity and aesthetic research.

#### **MATERIALS THAT SPEAK OF NATURE**

The desire to bring living back to a more human and harmonious level took shape through coherent, refined design choices: neutral colors, essential forms, and natural, eco-friendly materials. From the start, wooden flooring was a non-negotiable element.

After careful selection, the choice fell on Fiemme Tremila, a company renowned for its commitment to sustainability and healthy indoor environments. The Romantico finish from the Boschi di Fiemme collection stood out for its warm, natural palette and the tactile appeal of its surface, enhanced by a brushed finish that makes it even more inviting.

#### **A DISTINCTIVE FRENCH HERRINGBONE**

The wood was laid in a French herringbone pattern, a stylistic choice that brings elegance and movement to the interiors, perfectly in tune with the project's minimalist yet sophisticated aesthetic.

The open-plan kitchen and living area form the heart of the home: a fluid yet well-defined space where the arrangement of furnishings creates functional zoning without compromising visual lightness.

#### **LIGHT THAT CARESSES THE WOOD**

Full-height glass walls blur the boundary between indoors and outdoors, drawing the eye-and the step-towards a 50-square-meter terrace. Here, the wooden flooring continues seamlessly, acting as a true connector between inside and out. Natural light enhances



*Wood, used for both flooring and furniture, creates a warm and familiar atmosphere.*



*Geometry and material interact with natural light, enhancing the pattern and finish of the floor.*







every detail, highlighting the wood's grain and the geometry of the pattern with reflections that shift throughout the day.

#### **CONTINUITY AND WELL-BEING THROUGHOUT**

The same warmth of the

wood extends into the two bedrooms, the study, and the master suite with en-suite bathroom and walk-in closet. The parquet guides the eye and the step in every room, creating a visual thread that unites the spaces and infuses

a pervasive sense of harmony and well-being.

In a project where everything is designed to convey balance, intimacy, and familiarity, wood becomes a silent yet precious ally, transforming a house into a true place of the soul.







## BERTI PAVIMENTI LEGNO

Berti Pavimenti Legno stands as an Italian excellence in wood craftsmanship, renowned for artisanal quality, technological innovation, and avant-garde design.

For over ten years, the collaboration with Diesel Living has enriched the portfolio with collections that merge fashion vision and manufacturing tradition, confirming Berti as an international benchmark in the world of design parquet.

### ◀ TARTAN COLLECTION BY DIESEL LIVING WITH BERTI

*An iconic pattern that reinterprets the Scottish tartan through the warmth of wood: the Tartan collection by Diesel Living with Berti transforms surfaces into a bold and contemporary graphic statement.*

*In the forest green version with bright yellow accents, the flooring becomes the centerpiece of creative and urban interiors, blending fashion vision and cutting-edge design into an aesthetic experience of strong visual impact.*

**berti.net**



**CLIPLIST™**

Patent Pending

**NEW  
PRODUCT**



WATCH THE VIDEO  
TO UNDERSTAND  
HOW FAST AND  
EASY CLIPLIST™  
INSTALLATION IS

Designed & Made  
**in Italy**

**QUICK-STEP®**  
FLOOR DESIGNERS

## The decorative strip with **Push Clip System**

### Elegance, practicality and minimalism.

This is how the new Unydeco product **CLIPLIST™** is summed up, an innovative patented fixing system of skirting boards to the floor using the “push clip system” technology.

The minimal skirting boards are fixed without the use of nails, adhesives or silicones; they are elegant in their shape and are offered in the main anodic finishes, such as silver and bronze, or white or black lacquered; moreover, through digital printing, they can be customized making the strip become one with the laid floor: a skirting board which, despite being installed, becomes invisible!

**CLIPLIST™** strips can be laid on any floor: parquet, laminate, SPC, tile or marble; the only caution when laying the floor is to leave a minimum expansion of 3 mm around the perimeter. and a maximum of 15 mm. Profiles can be used with floors that have the thickness not less than 5 mm.

### Strengths:

-  **Practical assembly without nails or glues.**
-  **Possibility of disassembly and reinstallation.**
-  **Pleasant aesthetic result.**
-  **Color customization with digital technology.**
-  **Cable trunking.**
-  **Possibility of LED installation.**
-  **Noise transmission attenuation.**

[www.unydeco.com](http://www.unydeco.com)

**UNYDECO®**

PARQUET À PORTER

**Your style choice.  
In every room.**

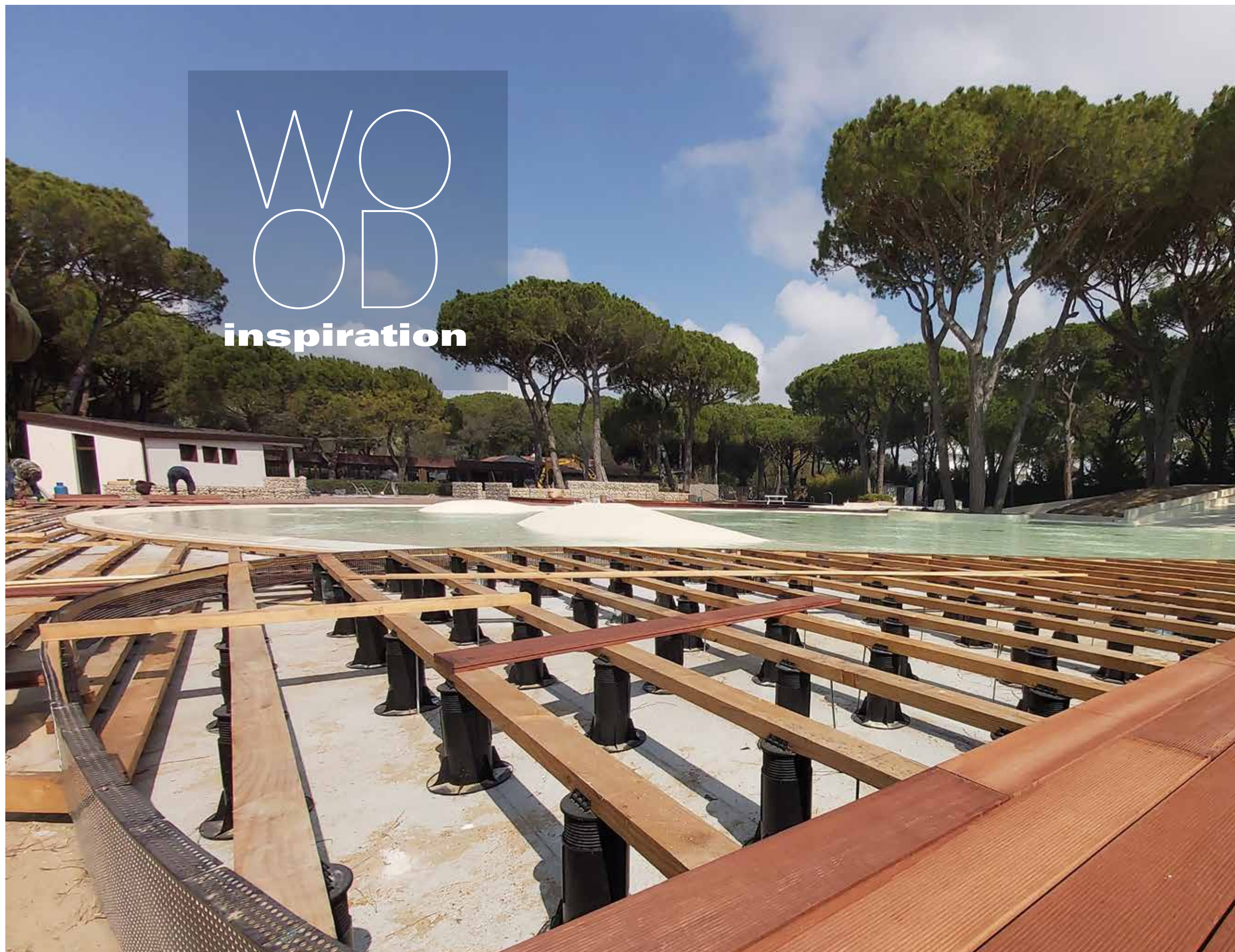
AMT4003

**QUICK-STEP.IT**



# WOOD

## inspiration



### ITALPROFILI

Italprofili is a company from Torre di Mosto (VE) specialized in the design and production of technical accessories for construction. Since 1976 it has offered innovative and certified solutions for roofs, external floors and foundations. Its complete range of products guarantees quality, reliability and technical support to professionals in the sector.

#### ◀ SPECIAL LIGHT JOIST

*For the construction of the panoramic terrace of a prestigious campsite immersed in the Jesolo pine forest, the adjustable paving supports "Special Light Joist" by Italprofili were chosen. This system ensures stability, resistance and easiness of installation even in complex conditions. The adjustable paving supports were laid with the integration of Lifter, the new extension developed to extend the screw, until reaching the desired height, without having to change the type of paving support. Lifter guarantees precision, efficiency and speed of intervention. Available in 3 heights (10-30-70 mm), Lifter can be stacked without limits to reach the desired height.*

**italprofili.com**









Garbelotto signs a unique project for an exclusive apartment in Cortina d'Ampezzo, nestled in the heart of the Dolomites, where craftsmanship, cutting-edge technologies, and environmental respect blend to create spaces of extraordinary beauty and functionality.

#### **A UNIQUE PROJECT BETWEEN DESIGN AND NATURE**

In the heart of the Dolomites, Garbelotto has created a one-of-a-kind flooring design for a prestigious private apartment in Cortina d'Ampezzo. This custom-made project combines the company's artisanal expertise with state-of-the-art technology, giving the spaces an unmistakable personality.

At the core of the project lies the Antichi di Rovere line, a collection where reclaimed wood is restored using techniques that preserve its natural charm. Cracks, nail marks, and wormholes narrate the story of each plank, transforming it into a unique work of art.

#### **A GLIMPSE INTO THE PAST WITH CONTEMPORARY TECHNOLOGY**

The choice of antique wood is not only an aesthetic one but also technological. The planks from the Antichi di Rovere collection are transformed into three-layer engineered wood, ensuring high stability and reliability, ready to be installed in exclusive spaces. This approach merges the allure of the past with the functionality demanded

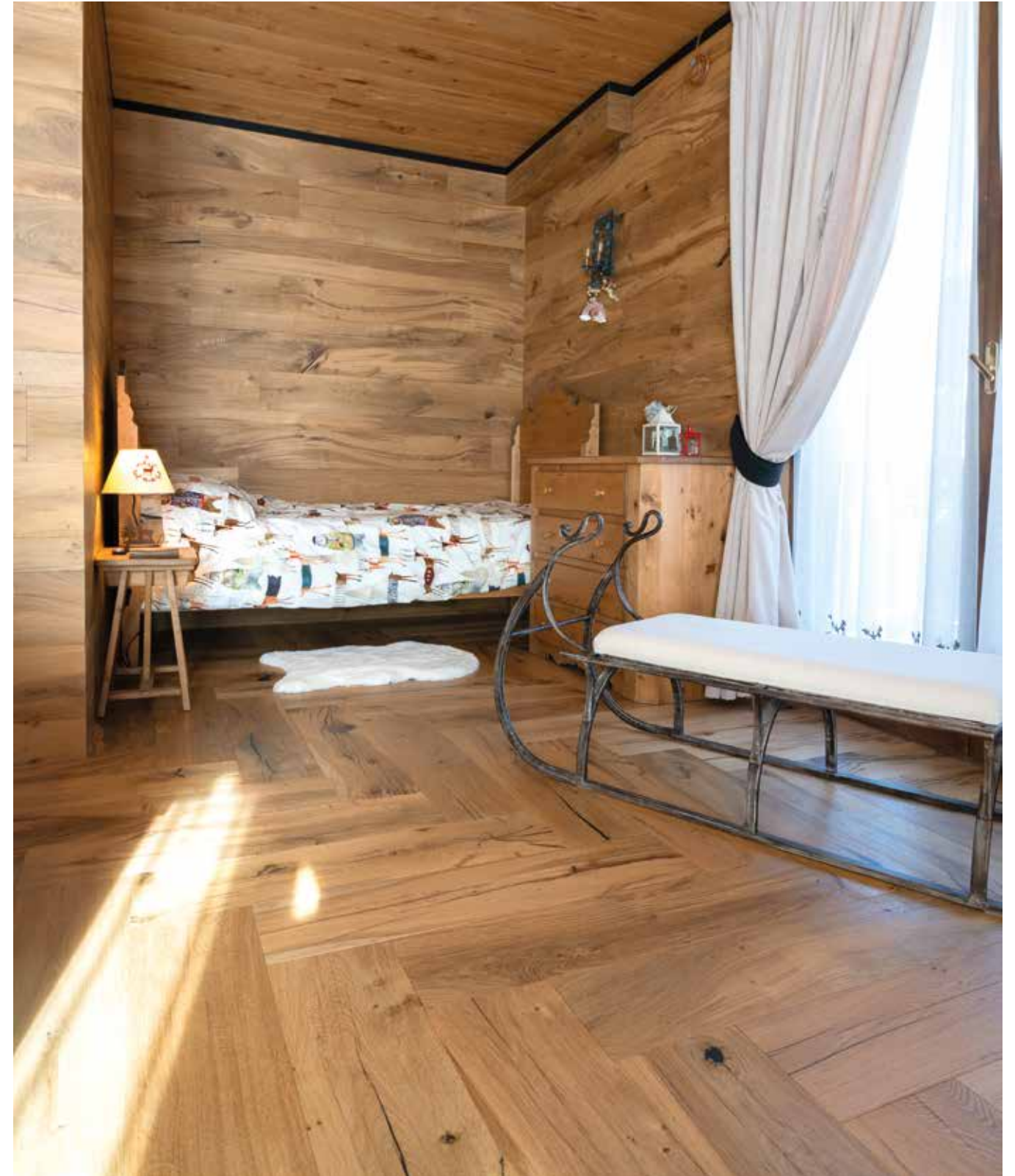
by modern living.

For the Cortina project, the property opted for 90-degree Italian herringbone installation, a pattern that provides visual rhythm and refinement, further accentuating the apartment's unique character.

#### **INNOVATION AND PRACTICALITY**

One of the standout features of the project is the Clip Up System®, a patented technology that enables fast and highly innovative installation. Thanks to this system, each plank can be easily removed and replaced, ensuring simple maintenance and a fully inspectable floor without the use of glue or nails. This solution represents a revolution in wooden flooring, seamlessly combining aesthetics and practicality.





#### **TOTAL WOOD: THE ABSOLUTE PROTAGONIST**

The elegance of the project is further enhanced by the “total wood” effect, where wood extends beyond the flooring to cover walls

and ceilings. This approach creates a warm and welcoming atmosphere, emphasizing the connection with the surrounding nature and lending the interiors a timeless elegance. The selected furnishings complete

the design, reflecting a harmonious balance between modernity and tradition: minimalist, linear details alternate with antique pieces, resulting in a unique and refined ambiance.



**Graziano Simone#82**

**CIV Campionato Italiano Velocità 2024**

**Aprilia 660 CIV**



**SIMO82**

# FASE

la Qualità Corre

# VELOCE

Da sempre al fianco dei professionisti del parquet, FASE è sinonimo di innovazione e affidabilità nei macchinari per la posa e la riparazione.

Ora portiamo la nostra passione anche in pista, sponsorizzando un pilota che incarna la velocità, e la precisione che contraddistinguono ogni nostro prodotto.

Che tu stia cercando un macchinario o l'adrenalina di una gara mozzafiato, scegli l'eccellenza.

**SCEGLI FASE**

parquet  
pavimenti per esterno  
levigatrici

monospazzole  
spazzolatrici  
aspiratori

troncatrici  
accessori e utensili  
abrasivi

profili e battiscopa  
strumenti di misura  
prodotti chimici

Show Room: Via della Vittoria, 98 - San Damiano - 20861 Brugherio  
info@faseitalia.it - www.faseitalia.it - Tel. +39.039.831301



Dynamic surfaces designed by

*pininfarina*

**Corà**

CERSAIE, HALL 31 - STAND A31



# F+C HOUSE

Nestled in the hills of Verona, this refined-and sculptural-green-minded architecture combines minimalism, natural materials, and advanced technological solutions

TITO FRANCESCHINI







Set in the lush heart of Verona's rolling hills, F+C House is a sculptural work perfectly integrated into the landscape of the renowned Torricelle area. With 300 square meters of living space and a 2,500-square-meter outdoor area, the residence offers a unique balance of elegance, modernity, and

sustainability.

#### **OPEN SPACES AND A SIGNATURE FIREPLACE**

The ground floor unfolds as a large open-plan area housing the living room, kitchen, and dining space. These areas are divided by a custom-made water-vapor fireplace, a central feature adding character to the interior design. Expansive

windows open the interiors to the garden, creating a seamless dialogue between nature and architecture. On the north side, a private garage completes the level. A suspended, backlit staircase leads to the first floor, where the master suite is inspired by Japanese style, complete with an open bathroom and walk-









**PROJECT DETAILS****Location:** Verona**Construction period:** 2023–2024**Annual energy consumption:** 15 kWh/m²**Client:** Private**Wood flooring:** Listone Giordano**Photography:** Francesco

Scandinavo

**Design:** Michele Perlini |

arcstudioperlini.com



in closet. The main bedroom opens onto a panoramic terrace with a hot tub—an ideal retreat for moments of relaxation. The same floor also hosts a second bedroom with en-suite bathroom, a study, and a laundry area.

**ARCHITECTURE AND LANDSCAPE IN HARMONY**

A large terrace wraps around the entire upper floor, defining the home's design with architect Michele Perlini's

distinctive touch. The sloping perimeter walls resemble a telescope, framing views of the hills and turning every window into a living picture.

**MINIMALIST DESIGN AND BESPOKE DETAILS**

The interiors reflect a minimalist, functional design philosophy. Clay walls regulate humidity, creating a perfect microclimate, while motorized roller blinds, invisible climate control, and mechanical

ventilation ensure optimal living comfort. The natural warmth of the wooden floors enhances the welcoming atmosphere, underscoring the harmony between materials and environment. Custom-made furnishings are paired with iconic design pieces, while the lighting scheme is designed to create intimacy: cuts of light and spotlights emit a warm tone (3000 K), adding a sense of comfort to the interiors.





# A refuge of light and style

In the Verona of both classical charm and contemporary spirit, an apartment with timeless design combines clean geometries, warm materials, and sophisticated details

FRANCESCA FERRARI







In the heart of the evocative city of Verona, Tape House reinterprets contemporary classic style with a design that blends elegance and functionality. Clean geometries and warm materials define the apartment's aesthetic, where predominant white creates a bright, airy atmosphere, while dark wood accents add depth and character.

The goal of architecture and design studio ABCPLUS was to create an environment that conveys serenity and comfort, enhancing natural light and fostering a sense of harmony between spaces. A thin black line runs throughout the entire project, providing continuity and connection between rooms. This distinctive element guides the eye and emphasizes the fluidity of the spaces, without ever interrupting the sense of openness and lightness. Every room follows this concept, harmonizing the

various areas through a coherent, flowing design.

#### AN ESSENTIAL AESTHETIC RICH IN DETAIL

Dark wood niches, enhanced with vertical slats, embody the perfect balance between function and decoration. These features not only break up uniformity with grace, but also integrate into the space as architectural details that add rhythm and character. Every design choice is the result of meticulous care, aiming to merge aesthetics and functionality in a refined way. Another distinctive element is the transparent glass panels connecting the hallway and the study, creating visual and luminous continuity between spaces. Strategically placed LED lighting guides the gaze along the route, enhances depth and perspective, and contributes to a serene, welcoming atmosphere.

This project is a perfect synthesis of tradition and modernity—an essential aesthetic, yet rich in subtle details—capturing the very essence of contemporary living.

#### PROJECT SHEET

**Location:** Verona, Italy

**Client:** Private

**Year:** 2024

**Concept and design:**

Studio ABCPLUS

**Design team:**

Nicola Braggio  
(partner in charge), Chiara Prando, Elena Ferrini,  
Giulia Zanardi

**Photography:**

Francesca Iovene







#### ABOUT STUDIO ABCPLUS

Founded in Verona in 2017 by architects Nicola Braggio and Damiano Capuzzo, ABCPLUS is an

architecture and design studio that works across all project scales—from interior design to urban planning—and stands out for an approach that blends aesthetics and functionality, always seeking a balance between people, the city, and the surrounding landscape. The studio's research is rooted in “subtraction,” creating simple and socially inclusive architectures. Since 2021, with the arrival of architect Andrea Frate, ABCPLUS has expanded its expertise to include advanced technologies such as BIM. In 2022, the addition of Valentina Dallari and Massimiliano Tita marked a further expansion into the hospitality and retail sectors, with projects extending to the international stage.  
**[braggiocapuzzo.com](http://braggiocapuzzo.com)**





# CASA B + LP: BETWEEN MATERIALITY AND LIGHT

In the heart of an '80s residential complex, a renovation transforms a two-level villa into a contemporary, fluid, and tactile space. The project focuses on visual connections, natural materials, and a strong centrality of wood

FRANCESCA FERRARI







*The large sculptural staircase in microcement and bronze-tinted glass blends seamlessly with the living area, connecting the kitchen, dining space and entrance into a fluid environment*

Within a residential complex built in the 1980s, architect Piergiorgio Miserendino oversaw the renovation of a villa of around 150 square meters spread over two floors.

The clients, a professional couple, envisioned a unified ground floor where dining area, kitchen, living room, and study could coexist in seamless visual continuity with the spacious garden outside.

#### **THE STAIRCASE AS A CENTER OF GRAVITY**

One of the project's key design features is the staircase connecting the ground floor with the upper sleeping area. The steel supporting structure, clad in microcement and transparent bronzed glass, was conceived as a light, sculptural element in dialogue with all the spaces on the ground floor: the entrance, dining area, and living room.

#### **TEXTURED WALLS AND WOOD AS THE PROTAGONIST**

In the living room, a custom drywall unit integrates bookshelves, a fireplace, and a TV. Its cladding in milled wooden panels—here the star element for its texture and warmth—is paired with stone-effect porcelain surfaces and enhanced by backlit LED strips.

This dialogue extends to the large central kitchen island, clad in the same fluted solid wood, creating aesthetic and material continuity.

#### **A KITCHEN DESIGNED AS A LIVING LABORATORY**

The kitchen is conceived as a dynamic space—a laboratory where rationality and creativity meet. Modular design, functional efficiency, and a cross-style language ensure full integration with the rest of the home. The style emphasizes materiality, a careful selection of finishes, and a palette of neutral and spiced tones that amplify volumes and reflect light.





Wood, stone-effect porcelain stoneware and backlit surfaces define the character of the living area, where functionality and warmth coexist in perfect balance.







#### PROJECT DETAILS

- **Construction company:** Peg Edilcostruzioni
- **Glasswork:** Vetreria Goethe
- **Ironwork:** Antonino Zarzana
- **Parquet:** Oak sauvage, Plancia Plaza 240, Haro Parquet
- **Lighting design & consultancy:** SMART LITE
- **Furnishings:** Caronia rappresentanze
- **Architectural design & site management:** Arch. Piergiorgio Miserendino (PM Architecture, Palermo) with Arch. Simona Liotta and Arch. Susanna Di Giovanni
- **Photography:** Antonio D'Anna Zolfo Studio

#### THE WARMTH OF PARQUET AND MATERIAL CONSISTENCY

A unifying element of the project is the amber oak sauvage parquet flooring (Plancia Plaza 240 by Haro Parquet), chosen to bring visual continuity, stylistic coherence, and thermal comfort to the interiors.

Wood, together with glass, metal, stone, and microcement, forms the foundation of a project that explores textures and colors with both sobriety and elegance.

#### TAILOR-MADE INTERIORS

Every room was designed with meticulous attention to detail. Custom-made furnishings and a few well-chosen designer pieces define a simple yet sophisticated style, characterized by natural shades-beige, browns, and greys-in harmony with the surrounding landscape and the scenic backdrop of Monte Pellegrino, closing the horizon toward the Tyrrhenian Sea.

#### LIGHT, MATERIALS, AND WELL-BEING

Lighting, relying on warm, soft tones, helps create a welcoming atmosphere. The dining area is marked by a solid wood table with a strong tactile presence, paired with metal and mustard velvet chairs.

Great attention was given to the bathrooms: the guest bathroom, clad in grey stone, is conceived as a single sculptural volume where furniture geometries integrate seamlessly. The master bathroom plays with pink hues and decorative stone, creating a relaxing, detail-rich setting-featuring an oak countertop, extra-clear glass, mirrors, and minimal-design fixtures.

#### LIVING COMFORT AND ENERGY PERFORMANCE

The master bedroom includes a partially open walk-in closet with vertical wooden slats and a freestanding bathtub, offering an intimate and immersive sense of domestic well-being.

The project also includes underfloor radiant heating across both levels and high-performance windows, ensuring daily comfort and excellent thermal efficiency.



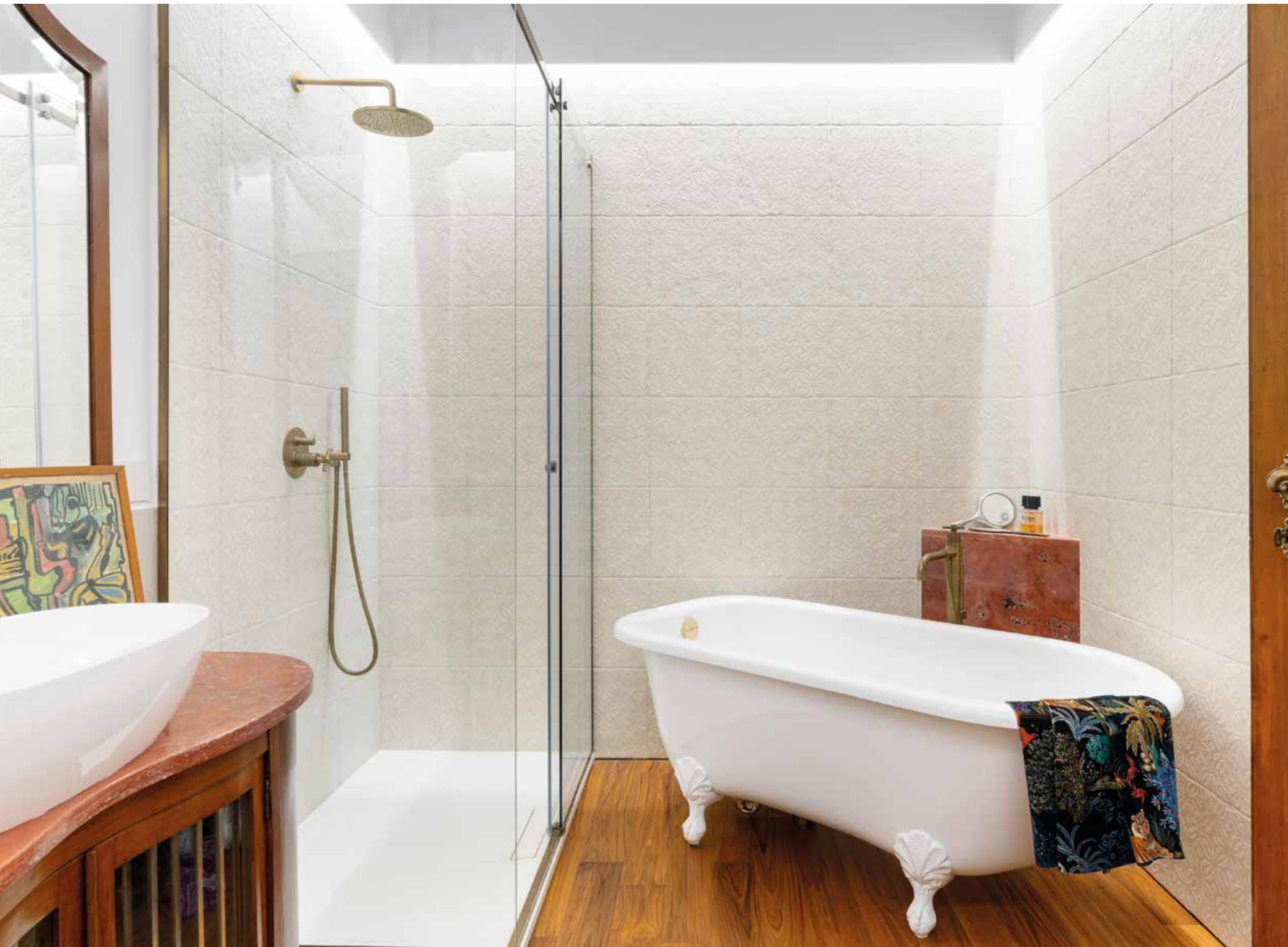
# MEMORY ON STAGE

Overlooking the Sorrentine Peninsula, this retreat becomes a three-dimensional narrative of three generations: between 1970s majolica tiles, family heirlooms, and the warmth of wood, a home takes shape - suspended between memories and contemporary visions

FRANCESCA FERRARI







Like a film that is both intimate and collective, the story of three generations of artists animates, shapes, and permeates the spaces of Una Casa di Famiglia, the latest renovation and interior design project by architect Valentina Autiero.

With a scenographic and visionary approach, the designer transforms an 80-square-meter holiday home in the heart of the Sorrentine Peninsula into a “family affair” poised between past and future—a sentimental narrative blending the respectful restoration of the existing with the insertion of new elements in a suggestive, layered, and multifaceted domestic setting in dialogue with the surrounding landscape.

#### THE HEART OF THE PROJECT

The design stems from the client’s deep wish to preserve the identity of their childhood home while integrating it with contemporary architectural solutions. Central to this vision is the original 1970s majolica tile flooring, with botanical motifs and bold, anarchic colors—both constraint and inspiration for the project’s concept.

#### NEW FUNCTIONS, OLD TRACES

Reorganizing the layout made the formerly closed kitchen flow into the living area. Bedrooms were reimagined, and the bathroom expanded into a relaxation space. Every room safeguards and reinterprets key objects of family memory: furniture, paintings, books, photographs.

In the living area, spaces open into an articulated open-plan setting, paced by archways that both divide and unite functions. A panoramic window connects indoors and outdoors, while the new floors intertwine with the originals, narrating the stratification of time.

#### MATERIAL DIALOGUES

The red detailing of artisanal tiles marks key transitions. There is no compromise: new interventions do not disguise themselves but boldly overlay the original colors in a free dialogue between eras and styles.

The cooking area opens onto the living room like a stage, with custom furnishings crafted by local artisans. Here, the white and red enamel of the flooring echoes in the polka-dot graphic of the frosted glass partition, multiplying points of light. In the sleeping area, the past is most palpable: the original floor and period furniture speak of an identity preserved, in an eclectic mix of memories.

The bathroom is centered around an old family mirror, repurposed into a functional vanity with travertine marble inserts. A retro bathtub with a triangular marble base becomes a scenic feature, while tone-on-tone décor and parquet flooring close the narrative in balanced harmony.









#### ABOUT VALENTINA AUTIERO

Neapolitan architect and designer Valentina Autiero has been working since 2003 in architecture, exhibition, and interior design, with projects spanning residential, hospitality, commercial, and museum spaces. Her design philosophy is bespoke: tailor-made spaces shaped to meet the functional and emotional needs of those who inhabit them. Particularly attentive to sustainability and material reuse, Autiero designs spaces meant to be lived in, not just admired. Each project grows from an empathetic dialogue with the client and takes form through meticulous attention to every detail—from overseeing artisans to final turnkey delivery.

[valentinaautieroarchitetto.com](http://valentinaautieroarchitetto.com)





# Fiemme Tremila

## BENEFIT CORPORATION

■ MARCO FELICETTI - CEO

*Fiemme Tremila is a company based in Trentino, Italy, that specialises in biocompatible wooden flooring, wall coverings, and furnishings. Founded in 1993 in Val di Fiemme, it was born from an ambitious vision: to bring the benefits of the forest into the home. A Benefit Corporation since 2023, Fiemme Tremila uses only wood from FSC® and PEFC-certified forests, processed in solid Triplostrato® layers and treated with Fiemme Tremila BioPlus® – a plant-based oil made from over 50 natural substances, which protects the wood and improves indoor air quality, as confirmed by research conducted by CNR-IBE.*



### FIOR DI TERRA

The Fior di Fiemme collection by Fiemme Tremila brings nature into the home in its most precious form: noble woods, carefully selected by the company, that turn the floor into the true protagonist of the living space. Essential craftsmanship protects and respects this exclusive raw material, allowing its natural beauty to emerge. The biocompatible teak planks of Fior di Terra evoke the strength of sun-scorched earth, with irregular fibre patterns interwoven with shafts of light and brown-olive veining. Fior di Terra is made from certified wood, crafted using solid Triplostrato® technology, and treated with Fiemme Tremila BioPlus®.

**fiemmetremila.it**

# Garbelotto



■ RENZA ALTOÈ GARBELOTTO - CEO



*Garbelotto stands as a symbol of Italian excellence in the parquet industry. For over 70 years, it has combined artisanal tradition with technological innovation, offering top-quality, sustainable, customizable wooden floors that are 100% Made in Italy. Each product showcases refined craftsmanship and sophisticated design, making Garbelotto a benchmark for architects, designers, and lovers of a unique and distinctive style.*

### CREATOR® LINE

Garbelotto presents the Creator® line, an exclusive collection featuring decorative rugs, medallions, Quadrotte, and artistic geometric patterns. Each piece is handcrafted with tailor-like precision, individually assembled and in some versions enriched with Venetian *murrine* and 24K gold, mosaics, precious stones, marble, or fine leather inserts, adding a touch of luxury and uniqueness. Garbelotto's Creator® transforms parquet into a bespoke work of art, ideal for prestigious settings where elegance and craftsmanship come together.

**garbelotto1950.it**



■ **MATTEO BERTI** - MARKETING MANAGER

# Berti

*Since 1929, Berti has turned wood into emotion. Born from Cesare Berti's vision, the company has passed down a true passion for parquet through three generations, blending skilled hands with cutting-edge innovation. Each plank tells a story of Italian beauty—crafted, refined, and brought to life in iconic spaces worldwide. Where there's Berti, there's soul.*



## BLACK SHADOW

UMMO reveals Italian flavors in a unique setting, enhanced by the Black Shadow parquet from Diesel Living with Berti. Fading from black to natural-wood tones, it adds rhythm and depth to the design by Elmsurfaces and StudioKCreative. Ideal for refined spaces and paired with design skirting, it stands as a symbol of elegance, innovation and Italian handcraftship.

**berti.net**

# Corà

■ **ETTORE CORÀ** - OWNER

*Corà has been cultivating a passion for wood for over 100 years and 4 generations, and is now one of the leading national distributors of wood essences. The Wood Flooring Division, the flagship of the company, offers more than 150 products for every indoor and outdoor need. Design, research and quality meet design excellence with iconic collections, innovative proposals and tailor-made solutions, thanks to collaborations with the big names in design such as Studio Pininfarina.*

## UNIQUE FLOORS MADE ACCORDING TO YOUR DESIGN

Beauty can take any form you want. For this private villa designed by Guido Ciompi Studio, Corà created an exclusive wood floor, exactly as imagined by the designer. The chosen finish Cipro Oro from the Ethico collection was applied on the rhombus shape of the oak floor with brass inserts, the result of a project that tells the sartorial soul of the company: Corà works side by side with designers and architects to transform every vision into custom-made wooden floors.

In the Gold and Silver versions, the parquet is enriched with fine precious powders that capture the light and elegantly enhance the wood's natural grain.

**coraparquet.it**





■ LORENZO ONOFRI - PRESIDENT

# Stile



*Stile, a renowned reference brand in the sector of high-quality parquet and wooden flooring, was founded in 1965. It has its roots in the heart of Umbria, in Città di Castello, where the company's headquarters and production facility are located.*

*Quality and innovation have allowed Stile to establish a prestigious presence in both national and international markets.*

*The added value of Stile lies in its 100% Italian in-house production, which has always been supported by highly advanced manufacturing plants. Over the years, Stile has invested in expanding its cutting-edge technologies to effectively manage the entire production process, ensuring flexibility in product offerings. The Stile product range is wide and diversified to meet the various needs of the market.*

## LAB STRIP

LAB STRIP collection represents a perfect blend of innovation and design, a new format that combines the past and the future, drawing inspiration from mid-20th-century design flooring and bringing it to life with a contemporary color palette. The choice of an engineered plank ensures maximum stability and precision during installation, optimizing the final result.

The dimensions of Lab Strip, 15 x 40 x 500 - 1600, are designed to fit perfectly in any type of space, offering versatility that allows for the creation of environments with a strong visual impact while remaining highly functional. Lab Strip is offered in the Naturale UV finish, which offers a tough, invisible protection, with a surface that feels soft to the touch and appears extremely matte and natural, like raw wood.

**stile.com**

# Woodco



■ GIAN LUCA VIALARDI - GENERAL MANAGER

*Since 1983, Woodco has believed that there is the right parquet floor for every design project and for every person. That is why the company places its knowledge and craftsmanship at the service of its customers, to create wooden floors of superb quality that are both affordable and unique. The extensive understanding of wood, workmanship and suppliers allow Woodco to add value throughout the whole production chain, providing first-class quality to its customers so that everyone can enjoy living in the warm and pleasant surroundings that wood is able to create.*



## SPINA LARGA

With an exceptional width of 180 mm, equal to that of a large board, the new Spina Larga by Woodco enhances the natural beauty of wood with an airy, relaxed and at the same time refined design, a recognized symbol of timeless elegance. Available in two different variants (with a 45° angle or a 52° angle), in four different woods (oak, walnut, elm and chestnut) and in over forty colours, it intertwines history, architecture and design in a story full of emotions and suggestions.

**woodco.it**





■ NICOLA DE MENIS - CEO

# Skema



*Skema was founded in 1992 in the province of Treviso and for more than thirty years has been offering wood, SPC and laminate surfaces for the home, office and contract sectors, inside and outside buildings.*

*Floors, walls and ceilings are offered with finishes and materials perfected through years of experience, respecting the health of the environment and of people. The extreme attention to environmental comfort has led to the creation of a division of sound-absorbing wall and ceiling coverings in perfect aesthetic and material continuity with the floor collections.*

*Passion, experience and taste are the key words that animate every company choice and every relationship with Italian and foreign customers.*

## FOLIA

With its pattern, the Folia designed parquet from the Yles line symbolises the beauty of nature. This unusual herringbone, born from the tight intertwining of elements, is reminiscent of a set of leaves that follow one another, meet and create dynamism and rhythm. At the base of this parquet is a trapezoid, developed in two elements centred on 10° to 45° angles. The wooden floor is three-layered, made in Italy, traced and certified. Yles is also distinguished by its surface treatment with a clearly visible bevel, natural oil stain and a brushed and textured surface.

**skema.eu**

# Profilpas



■ ENRICO BARISON - CHIEF EXECUTIVE OFFICER

*In a field where the balance between functionality and aesthetics plays a key role, Profilpas stands out for its ability to offer custom-made solutions for interior design. Part of the Mapei Group, the company has made innovation its strong point, investing in technologies capable of responding concretely to new design requirements.*

*Our digital printing system PDS represents one of the latest developments in this direction: an advanced technology that broadens creative possibilities and guarantees a perfect visual match between floor, skirting board and profiles. A concrete step forward towards increasingly customised, flexible and detail-oriented solutions.*



## PROFILPAS DIGITAL SYSTEM

Perfectly matching skirting boards, profiles and floors has never been easier. With the printing technology PDS - Profilpas Digital System -, it is possible to faithfully reproduce wood, SPC, marble, stone, ceramic and other specific decors on Alcom® Plus films. The digital varnish can also add a stunning 3D effect that gives greater depth and realism to surfaces. This system also makes it possible to greatly reduce metamerism: the optical effect that happens when the colour of an object changes with the changing temperature of light. This is particularly important in environments with different types of lighting, such as showrooms, shops and exhibition spaces, where the perception of colour can significantly influence the experience.

**profilpas.com**





■ LUIGI GIUDICI - OWNER

## BGP GROUP

BGP Group was founded over twenty years ago, drawing on the thirty years of experience of its founder, Luigi Giudici. Until 1999, he traveled across Africa, America, and Hungary to explore every detail of the world of wood and its processing techniques. Upon returning to Italy, he established BGP Group, a company with deep roots in the Bergamo area. For more than ten years now, the company has been led by his children, Georgia and Giovanni, who have carried forward their father's vision with a spirit of innovation. Thanks to a close-knit and skilled team, BGP Group is today one of the leading Italian players in wooden flooring for both indoor and outdoor applications. The product range is structured around five synergistic brands, each with its own identity and specialization:

- Gaia – The true soul of wood, the flagship brand dedicated to natural and authentic parquet;
  - Antica Falegnameria Annoni & Perego, a fully handcrafted brand, 100% made by our carpenters;
  - SmartFloors, a line of technical flooring designed for specific and high-performance needs;
  - Aquawood, a complete range of durable, weather-resistant outdoor flooring;
  - Rubia, a collection of practical and versatile laminate floors.
- A wide availability of ready-to-ship materials allows for quick and efficient order fulfillment, while the breadth of the offering ensures solutions tailored to every type of project.



### ANTIQUE OAK

An artisanal parquet born from an exclusive project for the Baglioni Hotel in Florence: panels made of antique oak, sourced from reclaimed beams and handcrafted to enhance the authenticity and history of both the material and Florence's oldest hospitality establishment. The oil finish brings out the texture, warmth, and timeworn charm of the wood. The design, custom-developed for the hotel's interiors, turns the flooring into an architectural element of great character and elegance.

[bgpgroup.it](http://bgpgroup.it)

## Friulparchet



■ ELIA BOLZAN - OWNER

With over ninety-five years of experience, the Bolzan family's passion for craftsmanship and wood is the hallmark of Friulparchet's professionalism and reliability. Guided by its heritage, the company pursues uniqueness by combining cutting-edge technologies with traditional craftsmanship, creating products that are attuned to contemporary trends and design, while meeting the highest quality standards such as UNI EN ISO 9001:2008 and complying with regulations like CE marking in accordance with EN 14342. Friulparchet's wide range of offerings is based on the use of the finest wood species from around the world, for both solid and engineered wood flooring. In addition to supplying materials for both indoor and outdoor environments, Friulparchet handles every phase of the process: from consulting on material characteristics and providing samples, to installation by specialized teams and ongoing surface maintenance.



### GEMMA

In the luxurious setting of a high-end hotel in Saudi Arabia, the opulent furnishings and sophisticated interior design of these exclusive suites are further enhanced by the Gemma pattern by Friulparchet. Custom-made in American Walnut for this project, Gemma adds a majestic touch to the environment, thanks to its warm, refined tones and distinctive geometric shape. Part of the Forme collection, Gemma is available in a variety of finishes, including bespoke options. It is the perfect solution for both contemporary and classic interiors—whether residential or, as in this case, hospitality spaces—offering a versatile and modern design element.

[friulparchet.it](http://friulparchet.it)





# Progress Profiles

■ DENNIS BORDIN - CEO

*Progress Profiles has been a leader in the production of technical and decorative finishing profiles and laying systems for buildings and interior design for 40 years. The company offers over 15,000 products and 21 patented systems for a wide range of environments. Progress Profiles' Italian heritage is evident in its wide range of functional and aesthetically pleasing solutions, which are produced using high-quality materials and state-of-the-art machinery at the company's headquarters in Asolo (TV), designed with a focus on sustainability.*



## KALEIDOS

Progress Profiles' skirting boards are among the products that best express the company's new Kaleidos concept, offering an unparalleled range of design options to complement the latest interior design and furnishing trends. They are available in heights of 40, 60, 80 and 100 mm, and with or without adhesive. They are practical and quick to install. They can also be combined with fittings such as internal and external corners, plugs, and joints to ensure that no detail is overlooked.

[progressprofiles.com](https://progressprofiles.com)

# Ravaoli LEGNAMI



■ ANGELO BAGNARI - OWNER

*Ravaoli Legnami was established in 1985 in Villanova di Bagnacavallo (RA). Over almost 40 years it has implemented its organisation, its production processes and its facilities, thanks to the innovative spirit of the Bagnari family and to its working group.*

*Today Ravaoli develops solutions for the decking and cladding world, with an eye to innovation and quality, taking great care in selecting certified, sustainable and highly technological materials. Its production facilities allow to achieve any type of processing. This way, Ravaoli can manufacture made in Italy products that are unique and customisable according to the needs of its clients.*



## BAMBOO RESISTO IROKO

Distributed by Ravaoli Legnami, Bamboo Resisto Iroko is the bamboo decking that combines refined aesthetic, technological innovation and environmental sustainability. Its unmistakable warm and enveloping caramel colour gives the outdoor spaces an elegant and distinctive feature, conceived to last over time.

Thanks to a cutting-edge production process – consisting in high-density pressing of the bamboo fibres, a steam treatment and a special protective finish – Resisto guarantees excellent performances as regards durability, hardness, dimensional stability and fire resistance. Supplied already oiled with a specific protective product, Resisto is a reliable and certified choice for those who look for a beautiful, performative material that respects nature, and it is also available in the shades Ipè and Teak.

*In the photo: Gallia Palace Beach Golf SPA Resort, Punta Ala (GR). Photo: Gianluca Ricci*

[ravaolilegnami.com](https://ravaolilegnami.com)





## Pedross GROUP

■ **DAVID PEDROSS** - CHIEF VISIONARY OFFICER

*The Pedross Group is a global leader in skirting boards and floor accessories. With innovative technologies, long-standing partnerships, and a focus on resource efficiency, the company has been committed to sustainability for generations. Now in its third generation and with 155 dedicated employees, Pedross continues to set high standards.*

*"Innovation, sustainability, and teamwork are the pillars of our success. For 70 years, we've set benchmarks for the future."*



### PEDROSS PROTECT

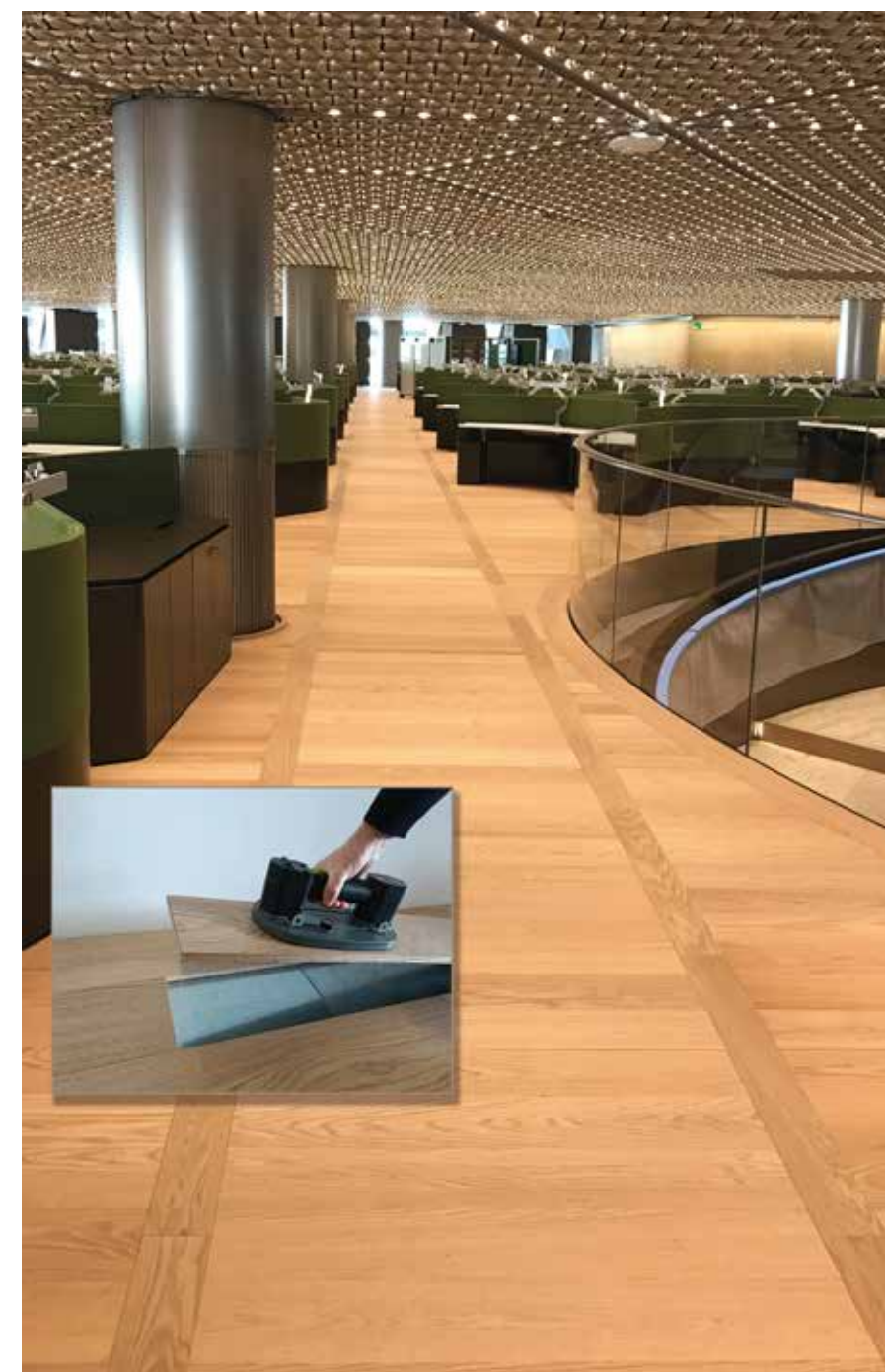
The innovative corner protection from Pedross Protect ensures elegant transitions and reliable protection at every corner. The Pedross Protect and Pedross Protect Lite variants offer functional solutions for both inner and outer corners – with shock absorption, premium aesthetics, and color coordination. The Pedross Protect Connector joins skirting boards invisibly. Custom-made, even in small quantities, and easy to install – for durable, stylish skirting solutions.

**pedross.com**

## Legno Tecnika



■ **THE LEGNO TECNIKA TEAM**



*Magnetik Floor is a trademark of Legno Tecnika srl, Italian wood flooring manufacturer or over a decade now, though boasting a twenty-year-long experience in the field.*

*A company originally designed to produce for other brands, both domestic and international, it has improved the production process to offer valued service and flexibility to the customers in terms of quality, product variety and speed of execution.*

*Legno Tecnika srl is also owner of the trademarks: Teknik Wood (manufacture and sale of engineered wood floorings) and Teknik Decor (sale of resilient floorings).*

### MAGNETIC WOOD FLOORING

Legno Tecnika presents: Magnetik Floor, the first and only self-laying system, that allows for firm installation of any wood flooring, though offering the greatest advantage of removing and replacing one or more planks in a fast and easy way.

Magnetik Floor, thanks to its magnetic power, ensures ease of positioning, total absence of glue and above all, the possibility of substituting one or more staves without difficulty or fear to damage the subfloor.

Magnetik Floor is the first, authentic and innovative magnetic parquet.

**legnotecnika.it**





# Florian

■ **CLAUDIA FLORIAN** - HEAD OF THE FLOORING DIVISION

*With a history of over 50 years Florian offers a wide range of products resulting from the processing of raw wood in full respect of the environment. Over time, the Florian Group has evolved to become the European leader in the hardwood industry, creating an ecosystem of dynamic companies driven by innovation and sustainability. The success of a company depends on many factors: the market, social and economic changes at local and global level, innovation capacity, commercial strategies and much more. Among all these variables, the one that makes Florian stand out is its strategic vision and the skills of the people involved.*



## FAMILY®

Among the various wood flooring by Florian, we have Family®: the new generation wood flooring, produced entirely in Italy, resistant, comfortable and pet friendly. Composed of a surface layer of oak, a core of birch plywood and a base of cork, natural materials that reduce noise and ensure well-being and health. Quick to install even on existing floors and equipped with floor heating. Florian's flooring proposals also include Engineered Floor, which is available in oak, either painted or unfinished.

- Flo.2: two-layer, with oak top layer and birch plywood.
- Flo.Light: three-layer, with oak, spruce middle layer and a solid support layer. Made entirely in Italy, these floors can be customised to meet all customer requirements.

**familywoodfloors.com**

# Alma BY GIORIO



■ **ALESSANDRO GIORGIO** - CEO



*Giorio Srl was founded in 1969 by Pierino Giorio, coming from a solid culture of wood and a great passion for this material. Over the decades, with the next generation, the company has become one of the most important companies in this sector. Alma has seen its business volume steadily grow and is now present in the main world markets. Following a gradual development, Alma is always keeping the craftsmanship quality at the center. Alma controls the entire production chain, starting from the selection of the best logs up to the latest finishes, dedicating the best care to each step of processing.*

## TRECCIA, A DESIGN ICON

Original, eccentric, and unique: the Geometrici Collection by Alma is an ideal choice for those seeking a parquet floor with a strong personality, capable of transforming the entire home. Interlocking patterns and innovative contrasts create unexpected, refined shapes, making design the undisputed focal point of any room. In this Milan apartment, the Smoked Treccia finish was installed—an iconic design that enhances the natural beauty of wood through a distinctive interplay of shades. The smoking technique adds depth and character, making each plank a one-of-a-kind piece.

**almafloor.it**





■ NEVIO PANSERI - CEO

## Chimiver

PANSERI SPA

*Chimiver Panseri S.p.A. is the leading Italian company in the market for adhesives, finishes and maintenance solutions for wood, resilient, resin, indoor, outdoor, and synthetic grass flooring. With 60 years of experience, Chimiver is now present in more than 60 countries worldwide. The company has made Sustainability its vocation, anticipating European regulations by several years. Since 2023, it has been publishing its Sustainability Report—a first step toward an ambitious goal: achieving Carbon Neutrality. The company strongly believes that investing in better, more durable, and more sustainable technologies is the best way to refine itself and contribute to creating a future of success, a sustainable future, that benefits everyone.*



### LIOS BIOIL COLORATO + ECOTRAFFIK 2K SYSTEM

The Lios Bioil Colorato + Ecotraffik 2K system delivers a natural-looking finish without compromising durability. Lios Bioil Colorato is a colored natural oil treatment for wooden floors, available in 18 shades. It penetrates deeply into the wood, enhancing the grain and emphasizing its natural beauty. After a drying period of 72 hours - or as little as 24 hours when accelerated with Lios Booster Oil K-Technology - Ecotraffik 2K is applied. This is a two-component, water-based polyurethane lacquer with high mechanical and chemical performance, combining aesthetics with long-lasting protection.

**chimiver.com**

## Kerakoll

GROUP



■ ALESSIO BRUNI - CORPORATE PRODUCT LEADER



*The Kerakoll Group is a multinational company working in the construction industry, offering an integrated range of products and services for building better places to live. Kerakoll was established in 1968, in the heart of the Sassuolo ceramic district, and began by producing ceramic tile adhesives. Today, the Group is divided into three Business Units focusing on the needs of Laying, Construction and Surfaces. Our Group achieved a turnover of 774 million euros in 2023 – 59% of which came from Italy and 41% from exports – and currently provides work for over 2,300 people including employees and freelancers. We have a direct presence in 11 countries and operate 21 production plants. Kerakoll is a Benefit Corporation. We also obtained B Corp certification in 2023, confirmation of our journey towards a new ESG business model generating economic, social and environmental value.*

### MICRORESINA PARQUET

Parquet is a beautiful décor element able to bring elegance and character to any home. To keep it in pristine condition, it must be taken care of properly. This is why Kerakoll has developed Microresina Parquet, an innovative technology designed for the protection and decoration of Legno+Color floors and to “redesign” existing surfaces. This is an option that not only enhances the original beauty of parquet flooring, but also offers a sustainable solution that safeguards resources. With a range of 150 different colours available, from pale, delicate tones to more decisive shades of grey and blue, Microresina Parquet can be used to give the home a new look, adapting it to the changing demands of contemporary living. Simple to apply and with excellent adhesion, Microresina Parquet is a water-based coloured micro-film. It is easy to clean, and even the darker colours are resistant to detergents and disinfectants. The matt lacquered finish is suitable for use in environments where food is prepared (it is compliant with the HACCP protocol) or where children are present, thanks to the quality materials, craftsmanship processes and high quality standards adopted by Kerakoll.

*In photo: Floor Legno+Color Large KK 30*

**kerakoll.com**





■ ANGELO GIANGIULIO - PRODUCT MANAGER WOODEN FLOORING

# Mapei



*Founded in 1937 in Milan, Mapei is now one of the world's leading manufacturers of chemical products for the building industry and has contributed to the construction of some of the most important architectural and infrastructural works worldwide. With 102 subsidiaries operating in 57 countries and 90 manufacturing plants in 35 different nations, the Group employs more than 11,900 staff worldwide. The Mapei Group's consolidated revenue amounted to almost €4 billion in 2022. The foundations for the success of the company are specialisation, internationalisation, research & development and sustainability.*

## ULTRACOAT RENEW FL

Restore quickly, hygienically and effectively. Because of their type of use, floors are the surfaces most exposed to contamination from external sources and today, more than ever before, environmental hygiene is of primary importance. Which is why Mapei is proposing a risk-free solution for restoring and hygienising wood floors in a short space of time and provide a high level of protection against the proliferation of bacteria. And now, with Ultracoat Renew FL, it is possible to restore the finish of wood floors without changing their original look and, more importantly, without disruption and lengthy work times, to give a new lease of life to their surface finish.

**mapei.com**

ANTICA FALEGNAMERIA  
**ANNONI E PEREGO**

*Conosciamo la materia dei sogni*

**15** anni di  
garanzia

[www.annonieperego.it](http://www.annonieperego.it)





# Biffignandi SPA

■ **ALESSANDRO GUALAZZINI** - AREA SALES MANAGER, PARQUET DIVISION

*A company that has its roots in a clear corporate identity, by dipping to inputs coming from the different characteristics of its component, each innovator in its own reference market and having in common the development of surface treatment innovative technology, tools and complete systems.*

*Thanks to knowledge, passion, research and business partnerships Biffignandi group can develop, through constant innovation and technological changes, different surface solutions to fulfil market's needs with products having a clear and identifiable added value.*



## BONA MEGA EVO

Bona Mega EVO is a next generation 1K waterborne lacquer for wood floors with a new state-of-the-art self crosslinking technology that activates when applied.

Suitable for commercial areas such as offices, small shops, hotel rooms, and as a premium choice for homes. The unique formula delivers fast curing with excellent resistance to scratches, wear, and chemicals. Bona Mega EVO's smooth consistency offers outstanding filling and levelling properties. The unique self-crosslinking technology enables a fast return to the floor and short waiting times between coats. With VOC levels below 3%, the lacquer contributes to good working conditions with a low impact on indoor air quality.

**biffignandi.it**

*Lignum* VENETIA  
PAVIMENTI DA COLLEZIONE



Studio di Progettazione e Interior Design Architetto **Federica Depari**  
Fotografo **Enrico Mele**

**LignumVenetia S.r.l.**



+39 0434 370104



info@lignumvenetia.com



www.lignumvenetia.com

**Showroom**

Via San Quirino, 24/B  
33170 Pordenone (PN)



Wood. Dance to a different tune.



In defence of the original.

Wood used in building comes from forests with controlled timber felling. It is a completely renewable material which requires very low levels of energy in the production processes. A wood floor helps to maintain an ideal micro-climate inside the house, softens the falls of those just learning to walk and can be restored an infinite number of times.

Choose a wood floor.  
Sounds like music to your ears?



Opting for Kerakoll represents parquet floors handcrafted by skilled artisans using a comprehensive system for laying and finishing that unites the track record and reliability of SLC technology with the research and innovation found at Kerakoll GreenLab.

For over 50 years we have been taking care of your parquet by offering environmentally and people-friendly premium products that are recognised by parquet specialists the world over.



Gloss lacquered top, back and inner drawer with LC01 White finish, smoked glass washbasins, Canaletto Walnut wood back and bottom, Slimline wall-mounted faucets, Tondo storage mirrors, Le Righe Maxi oak paneling, wood flooring from the Tavole del Piave oak Murano collection. Itlas Total Look.

# Total Look

discover  
all Itlas  
collections

AD Studio Milano / Itlas - Nideggrando

ph. +39 0438 36 8040  
website: [itlas.com](http://itlas.com)

Itlas - via del lavoro - n°35,  
31016 Cordignano, Treviso - Italia

**ITLAS**  
IL LEGNO. LA TUA CASA.

