

# WOODMOOD



**FROM NATURE  
TO OUR HOMES.**

*Parquet is the right (authentic) choice*



FOR PARQUET FOREVER BEAUTIFUL,  
THE SOLUTION IS MAPEI.



Wooden floors make surroundings more welcoming and can last a long time.  
Mapei products, effective, innovative and easy to use, enable healthy, aesthetically impeccable  
and sustainable surroundings to be created that maintain their beauty over time.

EVERYTHING'S **OK**  
WITH **MAPEI**

Learn more on [mapei.com](https://mapei.com)



**NEW STAYCLEAN+**  
WORRY FREE & WATER RESISTANT  
PARQUET FLOORS

[www.pergo.it](https://www.pergo.it)

**PERGO**  
Floors for real life



**CLIPLIST™**  
Patent Pending

**NEW**

Designed & Made  
**in Italy**

Come to visit us at  
**Cersaie Bologna**  
from 25 to 29 September 2023  
**Hall 31 stand B22**

## The decorative strip with **Push Clip System**








### Elegance, practicality and minimalism.

This is how the new Unydeco product **CLIPLIST™** is summed up, an innovative patented fixing system of skirting boards to the floor using the “push clip system” technology.

The minimal skirting boards are fixed without the use of nails, adhesives or silicones; they are elegant in their shape and are offered in the main anodic finishes, such as silver and bronze, or white or black lacquered; moreover, through digital printing, they can be customized making the strip become one with the laid floor: a skirting board which, despite being installed, becomes invisible!

**CLIPLIST™** strips can be laid on any floor: parquet, laminate, SPC, tile or marble; the only caution when laying the floor is to leave a minimum expansion of 6 mm around the perimeter, and a maximum of 12mm. Profiles can be used with floors that have the thickness not less than 5 mm.

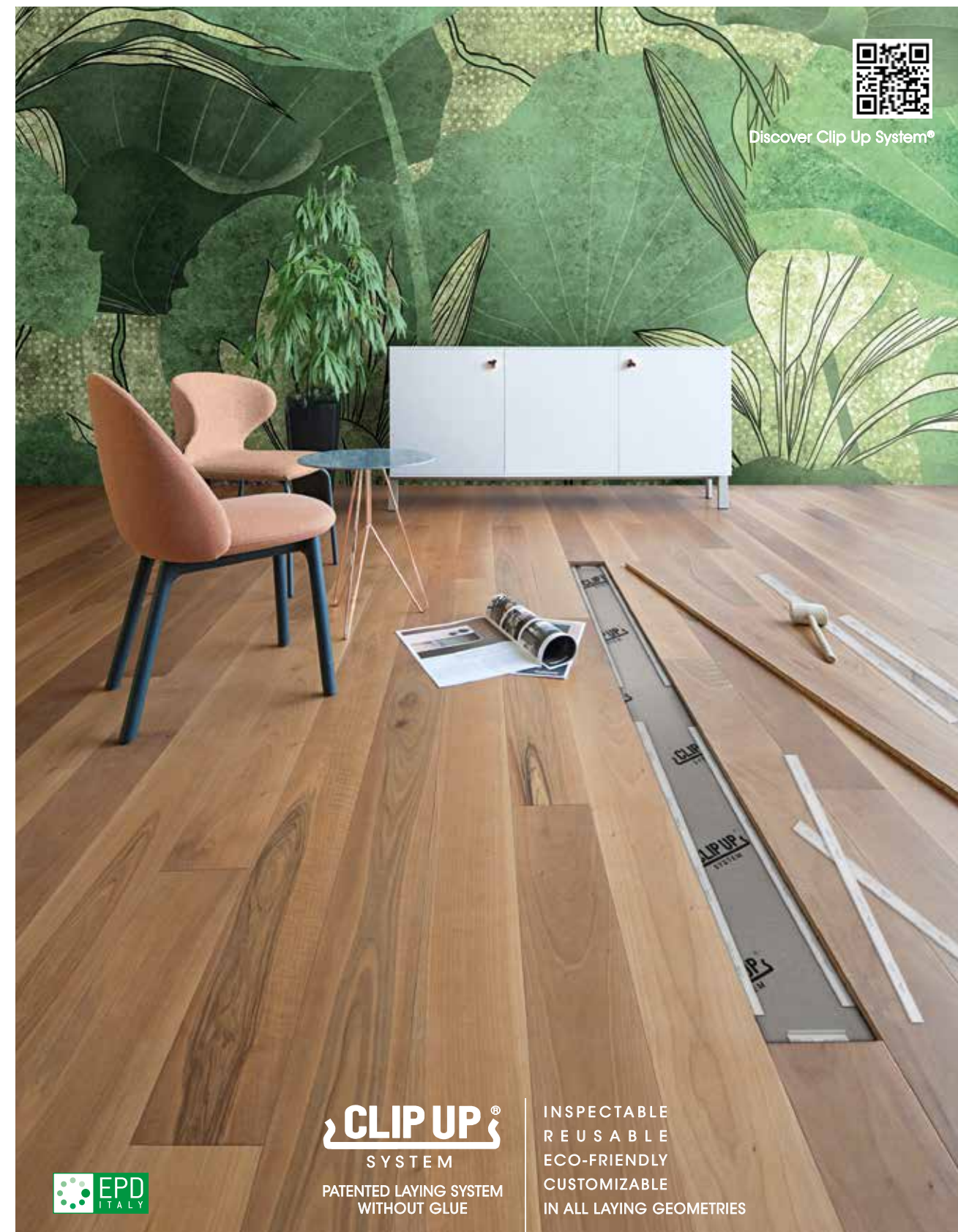
### Strengths:

-  **Practical assembly without nails or glues.**
-  **Possibility of disassembly and reinstallation.**
-  **Pleasant aesthetic result.**
-  **Color customization with digital technology.**
-  **Cable trunking.**
-  **Possibility of LED installation.**
-  **Noise transmission attenuation.**

www.unydeco.com

**UNYDECO®**

©milanese.comunicazione



European Walnut, Clip Up System® laying



**CLIP UP®**  
SYSTEM  
PATENTED LAYING SYSTEM  
WITHOUT GLUE

INSPECTABLE  
REUSABLE  
ECO-FRIENDLY  
CUSTOMIZABLE  
IN ALL LAYING GEOMETRIES



Discover Clip Up System®



Tel. +39 0438 580348 - info@garbelotto.it - www.garbelotto1950.it

**GARBELOTTO**  
PAVIMENTI IN LEGNO



HALL 22 | STAND A84





discover more

Item: Gradient / Collection I-Wood

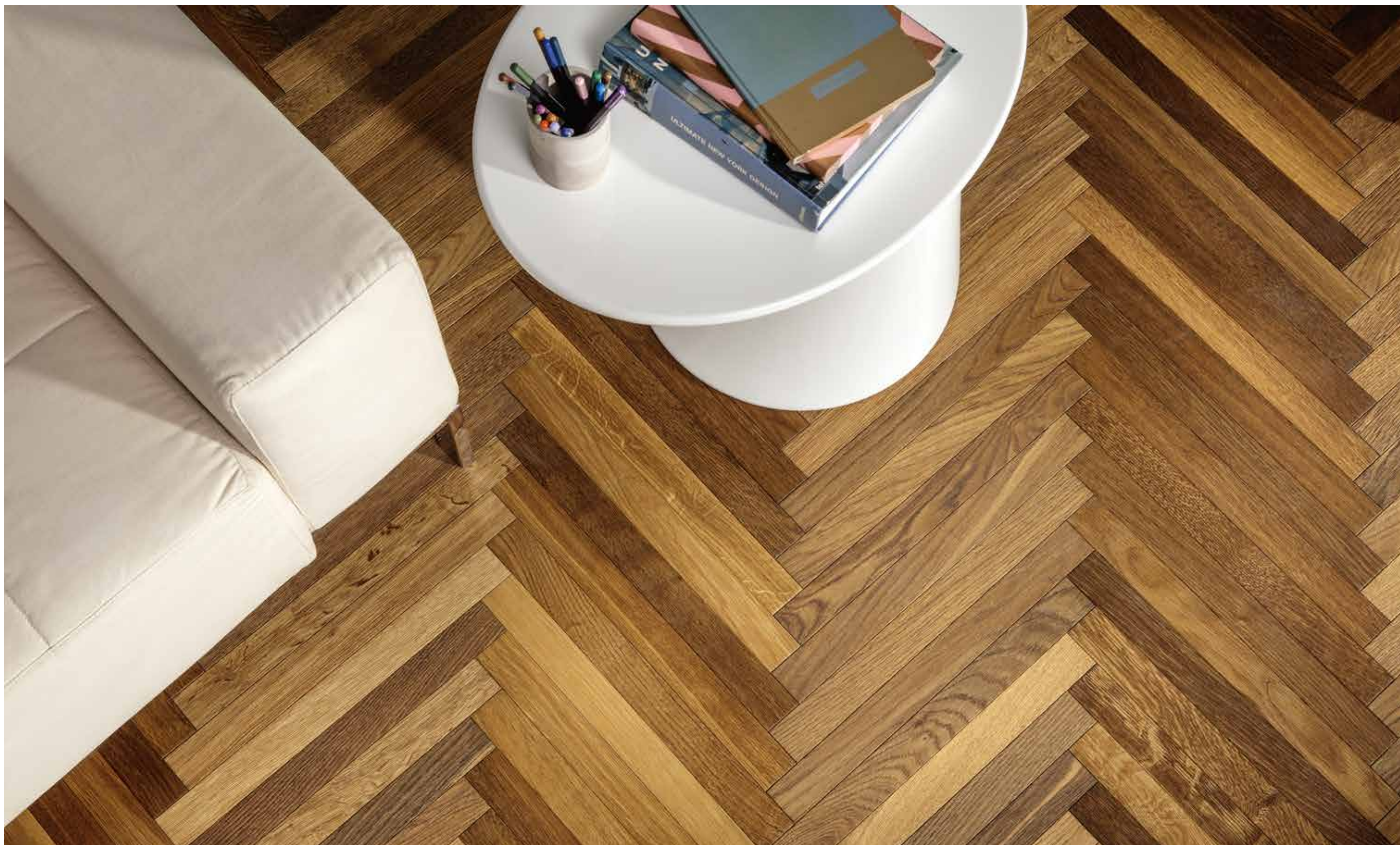


I-Wood is the new highly innovative real wood coating system, made with certified and sustainable materials. Thanks to the latest generation XtremeStrong

coating, the result is a product above average on the market and established by UNI 11622-1:2016 in terms of strength. Learn more, visit [www.berti.net](http://www.berti.net)

 **BERTI**









Opting for Kerakoll represents parquet floors handcrafted by skilled artisans using a comprehensive system for laying and finishing that unites the track record and reliability of SLC technology with the research and innovation found at Kerakoll GreenLab.

For over 50 years we have been taking care of your parquet by offering environmentally and people-friendly premium products that are recognised by parquet specialists the world over.

**kerakoll**



COVER BY  
Garbelotto  
garbelotto1950.it

**Editor**  
4PUNTOZERO Srl  
Via Sapeto 7,8 - Milano  
Tel. +39 320 6261241  
info@4puntozero.it

**Editor in chief**  
Federica Fiorellini  
fiorellini@4puntozero.it

**Editorial staff**  
Anna Baroni, Fabio Braga,  
Franco Bulian, Gianni Cantarutti,  
Francesca Ferrari, Tito Franceschini,  
Chiara Merlini, Michele Murgolo,  
Clara Peretti, Stiven Tamai

**Layout**  
Alessandra Migliazza  
migliazzaalessandra@gmail.com

**Advertisement Director**  
Luciano Dorini  
dorini@4puntozero.it

Roberta Basaglia  
roberta.basaglia@4puntozero.it

**Secretary**  
Jacqueline Davis  
segreteria@4puntozero.it



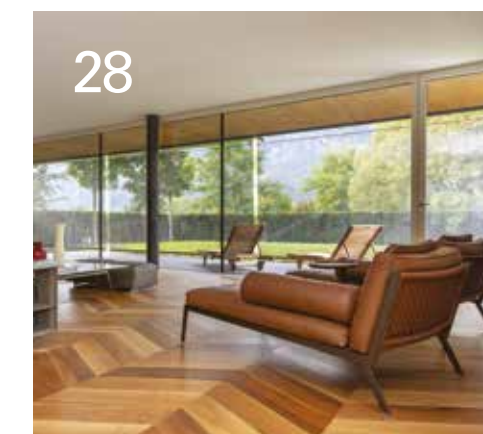
4puntozero srl, the authorised processor of data of those receiving this publication, points out that the purposes of such processing make it possible for this magazine and/or others it publishes to be sent which is to facilitate the update of technical information. Copyright for all material published in I Love Parquet International remains with 4puntozero srl

Supplement to I LOVE PARQUET Magazine N. 58, July 2023

## I LOVE PARQUET

### Contents

- 13 Editorial - Federica Fiorellini
- 16 Agenda
- 24 Oh my wood!
- 26 Wood Inspiration // Giorio
- 28 Living in nature - Tito Franceschini
- 38 5-star parquet - Francesca Ferrari
- 44 Wood Inspiration // Corà
- 46 Living on high - Francesca Ferrari
- 54 The warm elegance of oak - Francesca Ferrari
- 60 House on the park - Francesca Ferrari
- 66 Wood Inspiration // Italprofili
- 70 Nature in the city - Tito Franceschini
- 76 Wood Inspiration // Kerakoll
- 80 A surprise in the basement - Tito Franceschini
- 86 Wood Inspiration // Progress Profiles
- 88 Hospitality, nature and relaxation Val Seriana - Tito Franceschini
- 94 The art of restoration - Fabio Braga
- 98 FEP Pages
- 100 There's a house in the woods... - Francesca Ferrari





# Your wood floor.

The beauty of a unique wooden floor, born from the perfect fusion of avant-garde technologies and handcrafted finishes.

## FRIULPARCHET

Project by Studio Terrazzamare - Ph. Elia Falaschi

YEARS  
ANNIVERSARY  
FRIULPARCHET 95

friulparchet.it

San Giorgio di Nogaro (UD) ITALIA +39 0431 621198 / contatti@friulparchet.it

ILOVEPARQUET EDITORIAL

## I'm looking for a permanent centre of gravity

FEDERICA FIORELLINI



There was a deluge in Milan last night. I was woken up by a roar and I ran to the window which I had trouble closing - outside violent wind and rain - a hurricane. My son was at home, which made me feel better.

In recent years, I have more than once felt bewildered, and not only because of the climate. I felt it at the start of the first mass lockdown in history and again when war broke out in Ukraine. Sometimes I even feel it at work when I can't make sense of the world around me any more.

*"It's a difficult moment, not only because of the immediate situation, but also because things change from month to month with extreme rapidity,"* Lorenzo Onofri, Fep President, explained to me in Barcelona at the recent congress of the Federation of Parquet Producers, *"Last year the problem for us*

*producers was where to go to buy raw materials, this year it's where to go to sell our floors".*

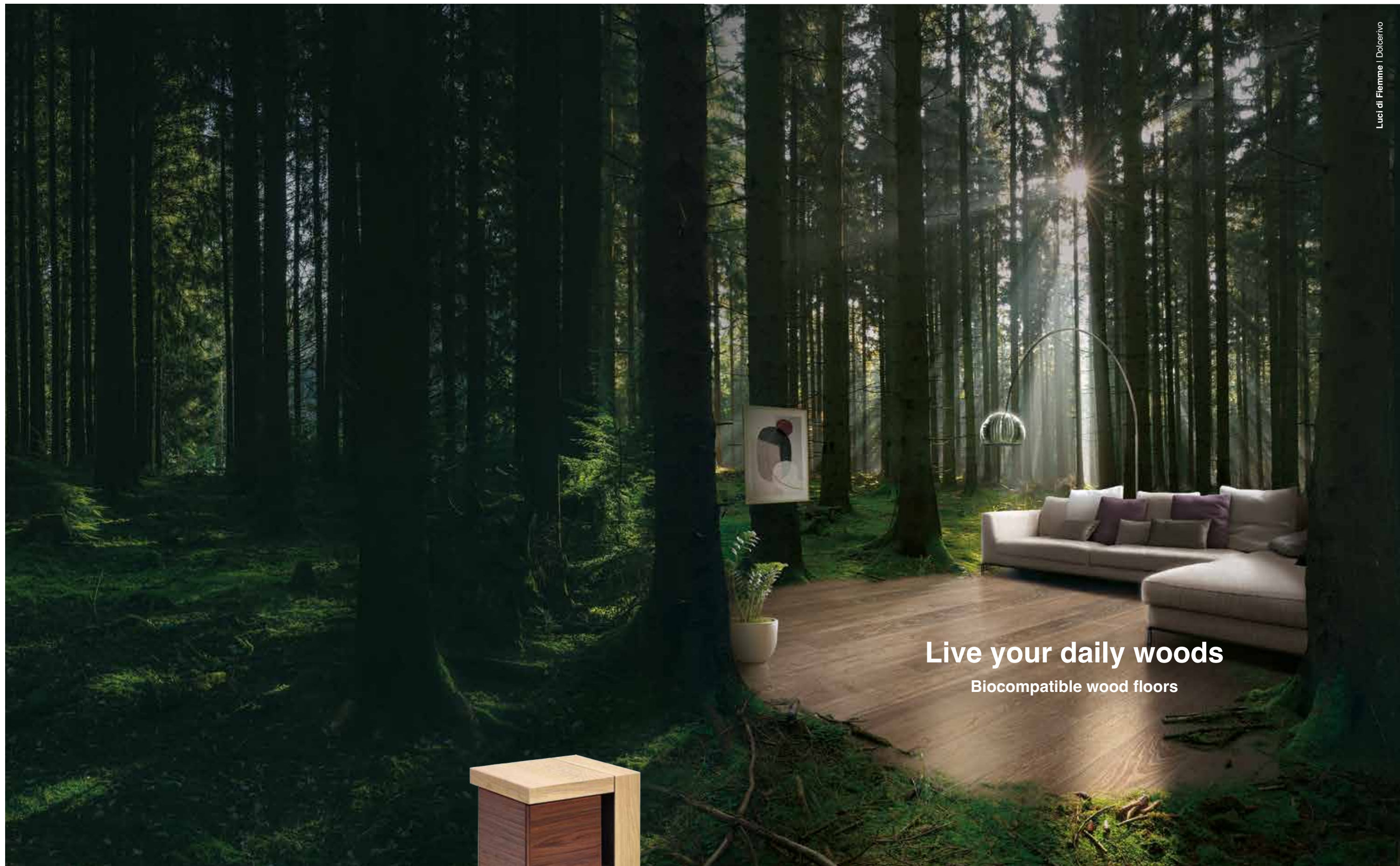
I came back from Barcelona with more things on my mind than when I went. For sure we're not facing an easy period. In Spain, they talk about the perfect storm (the climate metaphor is more than ever relevant): the consequences of the Russia/Ukraine conflict, expensive energy, armed conflict among extra-European competitors, inflation, fake timber materials, lack of correct, transparent communication to enable consumers to distinguish between real wood and fake, the scarcity of specialised manual labour... Have I forgotten anything?

So that we don't get lost in the storm, I think each of us must find our own centre of gravity and start from there, from our own values, from what we do best.

I have met many special entrepreneurs in recent years. Producers, retailers or layers - solid "centred" visionaries with a clear mission and the ability to lead their companies (and personnel) as well as providing emotional stability for all the others.

I am trying to identify my permanent centre of gravity. I will for sure continue to tell the stories of these "heroes of our time". I think I can do this well. I will certainly do it with kindness.





Luci di Fiemme | Dolcerivo

Made in Tunnel Studios

Live your daily woods

Biocompatible wood floors



Discover also Disegno di Legno furniture,  
from the same Fiemme Tremila planks.  
**A new way of conceiving wood furniture.**







**EDIT Napoli**  
Archivio di Stato di Napoli, Napoli  
6 - 8 October 2023  
[editnapoli.com](http://editnapoli.com)

**SEE YOU  
IN NAPOLI!**  
Three days dedicated to  
independent design and

design authors. EDIT Napoli is an innovative design fair created to support promote and celebrate a new generation of designers. It focuses on the rise of the designer-maker who is at the forefront of a movement that is challenging the traditional chain of production and distribution. EDIT Napoli selects a specific group of international independent producers craftsmen and enlightened manufacturers emerging as an autonomous force in contemporary design.



**Architect@Work Paris**  
La grande Halle de la Villette, Paris  
8 - 9 November 2023  
[paris.architectatwork.fr](http://paris.architectatwork.fr)

**A UNIQUE AND  
INNOVATIVE  
EXHIBITION  
LAYOUT**  
The mission of Architect@Work is to provide much more than a simple platform for architects and interior designers: considerable focus is laid on the exchange of knowledge and innovative

ideas. Short seminars provide an opportunity to present hot topics or for fellow architects to share their experiences with visitors. In order to ensure the optimal contact between exhibitors and visitors, visitors are automatically led along a route that winds its way through small, uniform modules. First contact takes place at the stand. The innovations showcased by the exhibitors are presented in corner units and on the walls. In each box, which comprises four corner units, a multimedia console takes centre stage. At Architect@Work, traditional aisles are transformed into lounge areas: places to enjoy a drink, to chat and to provide further explanation about innovative products, applications or services.

## WHAT ARE YOU LOOKING FOR?



**CHIMIVER OFFERS PROFESSIONAL PRODUCTS**  
for GLUING, FINISHING and MAINTAINING any kind of wooden floor.

Company solutions are conceived promoting a style of responsible corporate organization, safeguarding the environment and protecting people, from the applicator to the final user.



innovation



sustainability



made in Italy

**WHATEVER THE NEED, WE HAVE THE ANSWER**





## THE BUILDING COMMUNITY COMES TOGETHER AT FIERA MILANO

MADE expo evolves

and gives rise to ME, to be scheduled from 15 to 18 November 2023 in the East Gate halls of Fiera Milano, Rho.

A highly specialized and integrated platform, ME will be structured into two new exhibitions. The Construction exhibition will bring software and technologies for design and Building Information Modeling (BIM) to the fair,

as well as construction systems and solutions for structures and infrastructures; safety and construction site equipment; proposals for energy requalification, thermal insulation, and comfort; materials and finishes for interiors; solutions for the building plant integration. The Building Envelope exhibition will focus on the display of windows and doors; façade systems and roofing; components and accessories; production machinery for doors and windows; glass; industrial closures and solutions for shading and automation; outdoor, solar and insect protection.

**ME 2023**  
Fieramilano (Rho)  
15 - 18 November 2023  
[madeexpo.it](http://madeexpo.it)

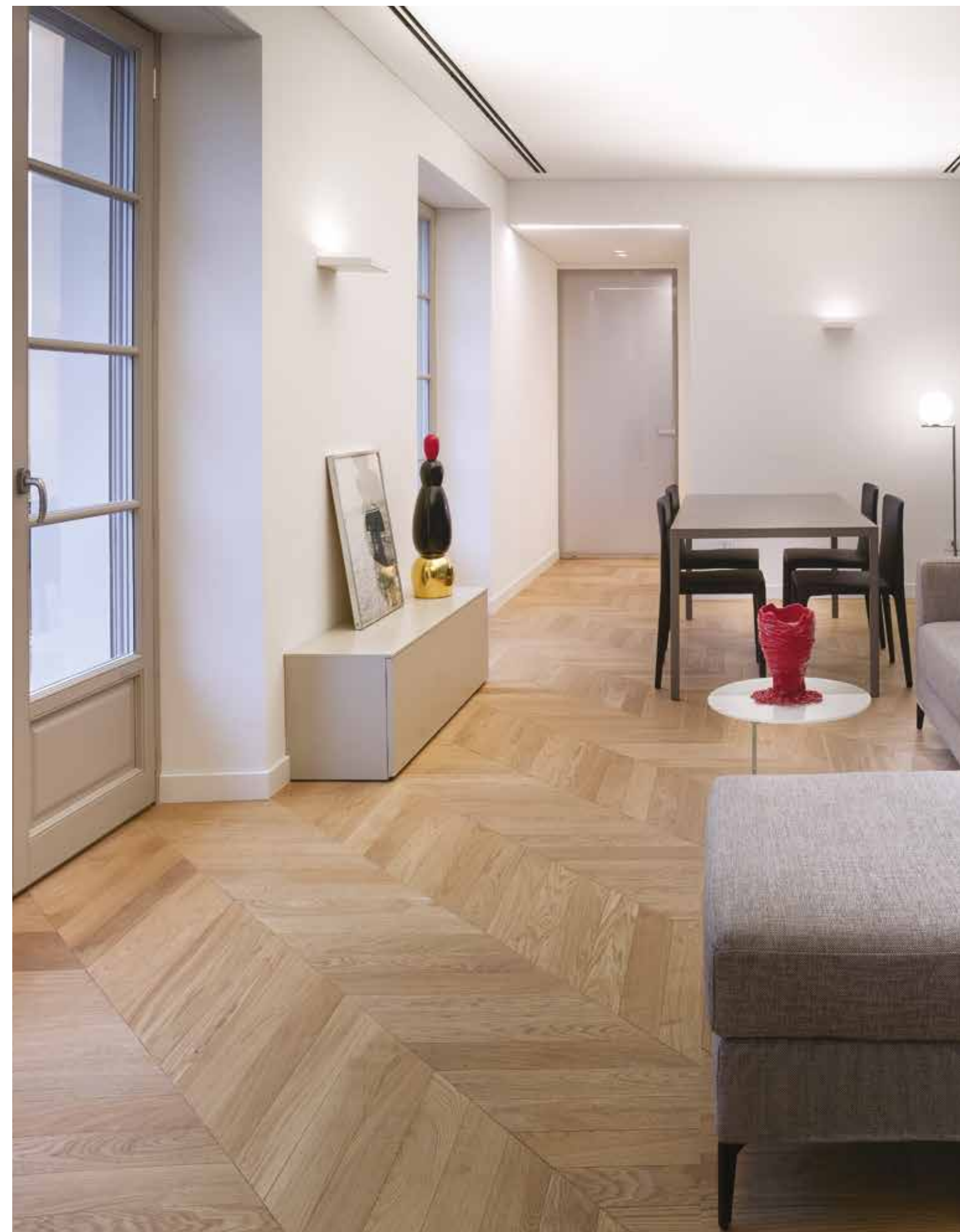


## FLOORED BY NATURE

After a successful comeback in 2023, preparations for the 34th edition of the world's leading trade fair for carpets and floor coverings are once again in full swing. As a source of inspiration and a global marketplace, DOMOTEX is constantly evolving - with a presentation area for wholesalers, mood spaces for residential and contracting, new formats for contractors and architects, and for the first time an exciting country focus. "Together with partners, we are going to present a country focus in the future. The focus is on trends and designs, colors and

innovations from the particular country. However, naturally, manufacturers and designers from the respective country will also be highlighted. In addition, we are happy to focus on other distinctive aspects, such as marketing concepts from the country. In 2024, Italy will be the focus of the event, marking its kick-off," explains Sonia Wedell-Castellano, Global Director DOMOTEX, Deutsche Messe AG. Among other things, "Insight Italy" will be staged with a new special display. It offers a global stage on which companies and partners can effectively present innovations, trends and designs and deepen business relationships.

**Domotex**  
Messegelände 30521, Hannover  
11 - 14 January 2024  
[domotex.de](http://domotex.de)



**Giorio srl**  
Via San Martino Nisocco 2, 12046 Montà (CN) Italia  
[info@almafloor.it](mailto:info@almafloor.it) - Tel +39 0173 976520  
[f](#) [@](#) [in](#) [almabygiorio](#)

**Alma**  
Giorio® pavimenti in legno





**Milano Home**  
Fiera Milano (Rho)  
11 - 14 January 2024  
[milanohome.com](http://milanohome.com)

## MILANO HOME: YOUR WAY OF LIVING

Milano Home is the name of this new yearly trade fair that will make its first appearance from 11 to 14 January 2024 at Fiera Milano, and which chooses to evoke in its name, Milan, the capital of design and the cosmopolitan city where trends are born, in order to embrace the vocation for innovation of the Lombard metropolis, which is also a privileged marketplace for the home sector. At the heart of the exhibition proposal - that includes the

world of Tableware, Kitchen, Home Decoration, Textiles, Fragrances, Concept Gifts, Christmas - is the Italian know-how, which will be mixed with the manufacturing, traditions and innovations of many foreign countries, to create a dynamic and international showcase of trends, style ideas and novelties. A new event that will also be a B2B experiential project, devoted to traditional and new points of sale, small and large, and to those in their business - Interior Decorators, Designers, Architects - who wish to increasingly enrich their range with sophisticated and unique products.



**ICFF New York 2024**  
Javits Center, NYC  
19 - 21 May 2024  
[icff.com](http://icff.com)

## NORTH AMERICA'S LEADING PLATFORM FOR CONTEMPORARY FURNISHING DESIGN

With its emphasis on original and sustainable design, ICFF presents a broad range furnishing product for residential, contract and hospitality environments to an audience of 10,000 architects, interior designers, retailers, distributors, developers, and press. ICFF and the co-located WantedDesign Manhattan bring together over 450 established and emerging

design brands from more than 30 countries. On the show floor, attendees will also have opportunities to find inspiration through ICFF + WantedDesign Manhattan Talks, a focused lineup of panel sessions, keynote presentations, and intimate conversations led by the most iconic names in the industry. Furthermore, opportunities to widen professional networks are boundless. From organic meetings on the show floor to evening events, attendees and exhibitors join together to exchange business strategies while strengthening relationships in the design community.



# Ultracoat® Renew FL

## THE QUICK, SIMPLE SOLUTION FOR RESTORING WOOD.

Everybody would like a splendid wooden floor, but each room needs the correct, sustainable products to guarantee they last a long time. **Ultracoat Renew FL primer for wood flooring** is the best choice for restoring your wood without sanding and without removing the old finish.



EVERYTHING'S OK  
WITH **MAPEI**

Learn more on [mapei.com](http://mapei.com)





# Wood you like ?

The "**Thermotreated Oak**" collection has a high temperature heat treatment that subjects the wood to hygrothermal processes in order to remove moisture and improve some physical characteristics, such as resistance to biological deterioration caused by fungi, molds and insects. The wood is dehydrated, and all its organic components come out by evaporation or crystallize inside.

The thermo treatment gives to the entire thickness of the noble wood lamella a slightly browned, natural and pleasant color.



**ORIGINAL PARQUET®**  
IL LEGNO DI QUALITÀ DAL MONDO

HQ . FACTORY via Dell'Artigianato 18  
SHOWROOM via Del Lavoro 4  
48011 Alfonsine (RA) - Italy  
P. +39.0544.80696

[www.originalparquet.com](http://www.originalparquet.com)



# OH MY WOOD!



## ◀ Ofurò

Inspired by traditional Japanese wooden bathtubs, which for centuries have been heralded for their healing powers, Italian firm Rapsel have created the Ofurò bathtub, a luxe soaking tub made of decay-resistant larch wood. Created entirely from larch (even the plug!) the finish is natural; ideal for showing off the beautiful, unblemished wood grain. Designed by Matteo Thun & Antonio Rodriguez.

[rapsel.com](http://rapsel.com)

## Dornstab ▶

This freestanding luminaire from 1947 exemplifies Wiener Werkbund criteria. By threading the saber-shaped stand through the lamp shade, designers J.T. Kalmar and A. Pöhl melded form as well as function-the stand allows the lamp shade to be positioned at three different, reader-friendly heights. The hardwood stand and handle may be left in a natural state with a protective oil or wax coating. The base reflects the lightness of the floor lamp as a whole; all metal parts can be finished in black bronze or polished brass.

[stylepark.com](http://stylepark.com)



## ◀ The return of wood

An evergreen tendency, that of wooden kitchens. Declined in the shades of its essences, the elegance of wood moves away from tradition to meet the contemporaneity of the LAB13 line. In this new composition, the return of wood results in the scenic immediacy of the Rigoletto Plus door in natural American Walnut chosen for base cabinets - with black aluminum groove - and for tall units - equipped with push & pull opening. Grooves, vertical and regular, obtained from the slat woodworking, offer dynamism and rhythm to the apparently linear distribution of the LAB13 model. The clear and simple design plays with different heights that give movement to the cooking and washing areas.

[arancucine.it](http://arancucine.it)



## ▲ Hypnotic Table

For over thirty years, Riva1920 has been doing research on non-conventional materials. Granting a third life to these staves taken from 10.000 liters Barolo barrels, which would otherwise have been disposed of, allowed firm to create the Hypnotic Table (design by Authentic Design).

The table displays a top made up of a combination of several curved staves interspersed with black resin inserts. The legs, each consisting of two oval iron rings, call to mind the curve shape of the top slats as wells as the iron pieces holding a barrel together, and are thus turned to a 45° angle.

[riva1920.it](http://riva1920.it)



## ▲ Modest luxury

Auping Noble is an elegant design bed, designed by Johan van Hengel for Auping. The bed exudes a modest form of luxury. The design is powerful due to its simplicity and consists of a wide plateau of solid oak, with rounded corners. The bed is handmade in Deventer from solid and sustainable oak wood.

[auping.com](http://auping.com)

## Romby Armchair ▼

From the transformation of the Romby chair designed by GamFratesi in 2020 and which smoothly and slowly turned into the "manifesto" item of Porro design comes the new Romby armchair for all-round use, opening up new possibilities in the home office and contract sector.

The shapes of the padded shell seem to blossom, the truncated cone base, on the other hand, gives way to the convenience of 4 central wooden legs, a sort of change of clothes with the visual effect of a full, suspended upper volume that seems to take flight.

[porro.com](http://porro.com)



## Hashi

Literally "chopsticks" in Japanese, Hashi starts precisely from a system with a minimal and rigid structure reminiscent of the oriental instrument from which it takes its name, to give life to products characterized by encounters of different styles, flavors and cultures, in a dynamic dialogue between two worlds. The uniqueness of Hashi lies in the use of Accardi's Outdoor Jacquard technical fabric: sustainable, light and waterproof and carefully crafted by artisan weavers.

[gervasoni1882.com](http://gervasoni1882.com)







## ALMA FLOOR

Thanks to an innovative design and a long experience in woodworking, Alma create long-lasting and eco-sustainable products with high quality. Each parquet is designed according to the space in which it will be laid, to the furniture and customer needs: all products can be fully customized, from the type of surface to the color, from size to shape. Our wooden floors are made by craftsmen who shape tailor-made solutions. Our Collections contain the natural beauty of wood combined with our creativity in designs and finishes, capable of adapting to any living style, from the most classic to the most eccentric.

◀ *Chevron 45° collection offers different installation designs and allows to create solutions suitable for multiple architectural styles. Able to combine antique and modern, it represents the perfect example of how tradition and modernity can go hand in hand, giving each room a timeless elegance and making the parquet the real star of the house. This picture is the demonstration of how a Chevron 45° parquet is able to enrich, warm and make welcoming even a modern environment. Thanks to an innovative design and a long experience in woodworking, Alma create long-lasting and eco-sustainable products with high quality. Each parquet is designed according to the space in which it will be laid, to the furniture and customer needs: all products can be fully customized, from the type of surface to the color, from size to shape. Alma's wooden floors are made by craftsmen who shape tailor-made solutions. Project: Zero6studio Photo: Cecilia Bordoni*

**almafloor.it**



# Living in Nature

Woods, mountains and Trento  
are the unifying aspects in this  
spacious home, which brings  
"outdoors" inside as part of  
the décor

TITO FRANCESCHINI



**PROJECT****Site:** private villa**Location:** Trento**Year:** 2022**Surface area:** about 400 sq.m.**Interior design:** directly overseen by the owner**Architecture and works****management:** Danilo Balzan**Interior floors:** Woodco, parquet

in natural walnut in customised Hungarian Plug

(700 x 800 x 180 x 14mm)

and in board format

(1400/2200 x 180 x 14mm).

**Decking:** Woodco, Extrashield

Externo planks with lpe

colouring.

At the gates of Trento, a large home designed to live to the full the mountains surrounding it, with few (but imposing) furnishings. The most important element of every room is the natural walnut parquet chosen by the owner for its powerful decorative effect.

Living in Nature: this is the defining principle of the project. A choice not only of architecture but also the owner's life choice. The owner oversaw and followed the project directly because of their wish to take their family away from town centres and be immersed in the beautiful Trento countryside. Woods,

mountains and the locality play a role in this new home, which literally brings nature inside transforming it into a unique, unrepeatable element of the décor.

**FOUR LEVELS - EACH WITH ITS OWN FUNCTION**

The house is on four levels, one of them partially underground, with a total surface area of about 400 sq.m. Each floor has its own function.

The basement is for well-being (with a sauna and gym), the ground floor is for welcome and hospitality, the first floor is the night area and the last floor is immersed in the countryside because it consists of a large

terrace with jacuzzi for enjoying the extraordinary view. Stylistically, the choice of colours, furnishings and décor in every room is oriented towards the main feature of the home, the floor in Woodco parquet.

Made of natural walnut with a brushed surface and finished with an extra opaque varnish, the parquet is the iconic element at the centre of the whole interior design. It dominates every space because of its imposing shades from caramel tones to darker and more intense notes.

**A 'CUSTOMISED' PARQUET**

In the day area, in other





words the whole first floor, the parquet gives rhythm and life to the rooms through the Hungarian plug laying. The size of the plugs which are 180mm wide was chosen directly by the owner.

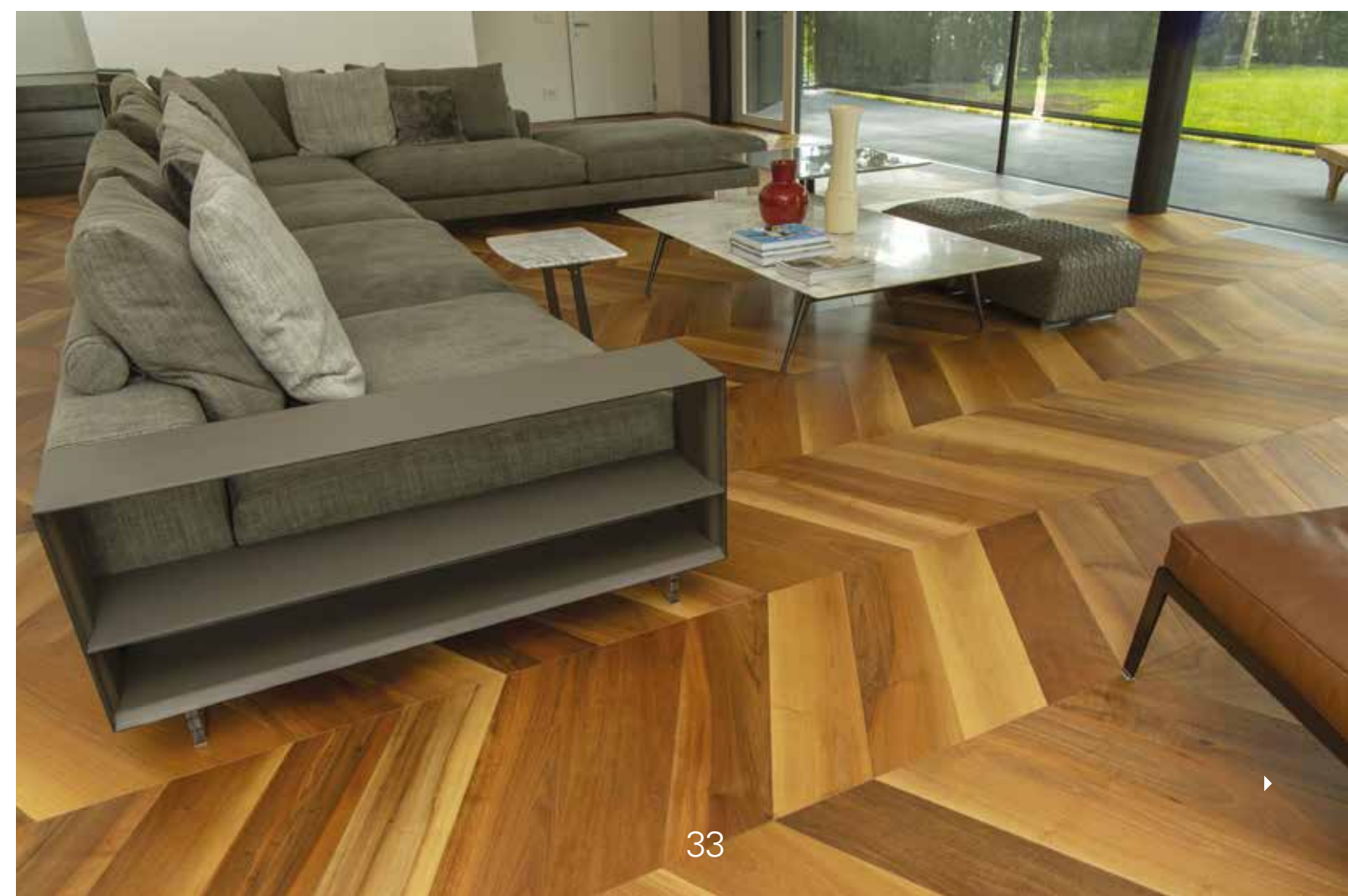
Woodco therefore produced a customised solution to meet the specific needs of this project. The dynamic effect of the floor and its strong aesthetic impact led to the choice of a few, well selected pieces of furniture, starting from the living area: a luxurious cloth-covered sofa, two leather chaises-longues and an eye-catching wall covering in natural stone which seems to have been taken directly from

the mountain. Volumes of an old Treccani encyclopaedia, memories of a grandmother, introduce the first steps of the staircase which leads to the next floor, transforming a piece of personal history into an element of the design.

#### MINIMALISM AND SOBRIETY IN THE KITCHEN

The choice in the kitchen too has been for minimalism and sobriety. The working space has been enclosed in a separate area, hidden from the sight of guests, all the equipment - oven, fridge, cupboards, wine rack - has been hidden in a dark-toned wall. A wide, stainless steel

island and an imposing table contrast their modernity with a large sixteenth century painting which matches the warm, welcoming tones of the Walnut parquet. The result is a semi-professional space which at the same time is welcoming and perfectly in tune with the owner's wishes and with the needs of a modern home. In the bathrooms, stairs and the night area, which includes seven bedrooms, the walnut parquet has been laid in a more traditional format. The large dimensions (1400/2200 x 180 x 14 mm) highlight the veining in the wood even more while reinforcing the airiness of the spaces.







#### THE EXTERIOR, WOODCO OUTDOOR FLOORING

The terrace on the top floor is an area for relaxing in the jacuzzi and admiring the majesty of the surrounding countryside. To give it an even more natural touch, Woodco Externo for outdoors has been chosen to give the floors a wood effect with unbeatable performance. Made from an ecomaterial based on sawdust and recycled high-density polyethylene, the Externo planks (here in brushed lpe colour) are resistant to UV rays, high and low temperatures, atmospheric agents, chlorine, insects and fungus. For even more resistance, the Extrashield version has been chosen so that each plank is encapsulated in shielding which increases the overall robustness of the floor, eliminating the need for any kind of maintenance. [woodco.it](http://woodco.it)







# BEYOND THE KNOWN

IMPECCABLE PROJECTS

NO MORE DIFFERENT AND NUMEROUS  
SUPPORTS BUT A SINGLE PRODUCT FOR ALL  
INSTALLATION SOLUTIONS.



03523 Visualcom - VE



**MiniPro**

MINI SIZE, PRO PERFORMANCE.

HEIGHT RANGE FROM 25 TO 50 MM WITH A  
SINGLE PRODUCT THANKS TO THE INTEGRATED  
EXTENSION. ONE HEAD WITH DOUBLE FUNCTION:  
SUITABLE FOR TILE, DECKING AND RAIL.



SCAN & GO  
IMPERTEK.COM

MEET US AT CERSAIE (25-29/09) BOLOGNA (ITALY) - HALL 32 STAND A4 - B3

pidiprogetto



project: Studio Marco Piva - photos: Andrea Martiradonna

## Style, class and elegance. At the highest level.

The charm of Ravaoli decking in the Solaria Tower in Milan

Ravaoli Legnami: wooden solutions for external floors and coverings.  
A world of quality and natural design.



[ravaiolilegnami.com](http://ravaiolilegnami.com)





# 5-star parquet

Studio Marco Piva in Cagliari has designed the interior of the new MGallery Palazzo Tirso, a boutique hotel housed in a restored monumental building from the 20s which was the site of the Sardinian Electrical Company

FRANCESCA FERRARI

**Project:** Studio Marco Piva  
**General Contractor:** A.P.I.C.E. Puddu Construction Group  
**Built up area:** 6,000 sq.m./5,800 sq.m.  
**Location:** Cagliari, Italy  
**Date:** 2023  
**Photo Credits:** Andrea Martiradonna





Housed in the historic building of the same name, the Hotel Palazzo Tirso is an elegant 5-star hotel in the centre of Cagliari, the famous town which is the gateway to Sardinia and the hub for Mediterranean cruises.

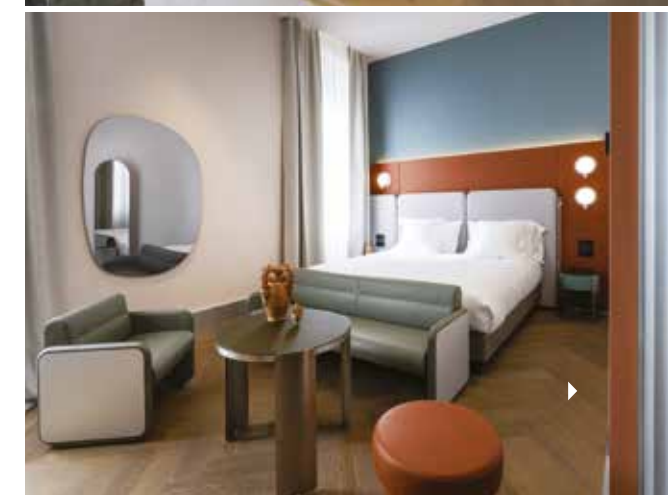
A real architectural jewel from the 20s of the twentieth century, the building has recently been restored by Studio Marco Piva. The Liberty-style façade has been brought back to its previous splendour and breathes elegance, while the airy interior with its modern touch welcomes guests into a timeless dimension.

#### **A BALANCE BETWEEN HISTORY AND MODERNITY**

Palazzo Tirso was once the headquarters of the Sardinian Electrical Company. Under Studio Marco Piva, its function has changed, but the historic value of the building has been preserved.

*"When we designed the interior, we bore in mind the history of its locality and the building's original function",* says Armando Bruno, founding partner and CEO of the Studio. He is speaking about how the fundamental principle of the project was to use contemporary touches inside a historic building while keeping the intrinsic elements of the original structure.

The project concept is based on a balance of the historic elements of the building and the innovation of new concepts. The design used creates a link with the past by preserving and valuing part of the original structure and its continuity. This approach means guests can immerse themselves in the history and elegance of Palazzo Tirso while at the same time enjoying the modern comfort and technology offered by a 5-star hotel.



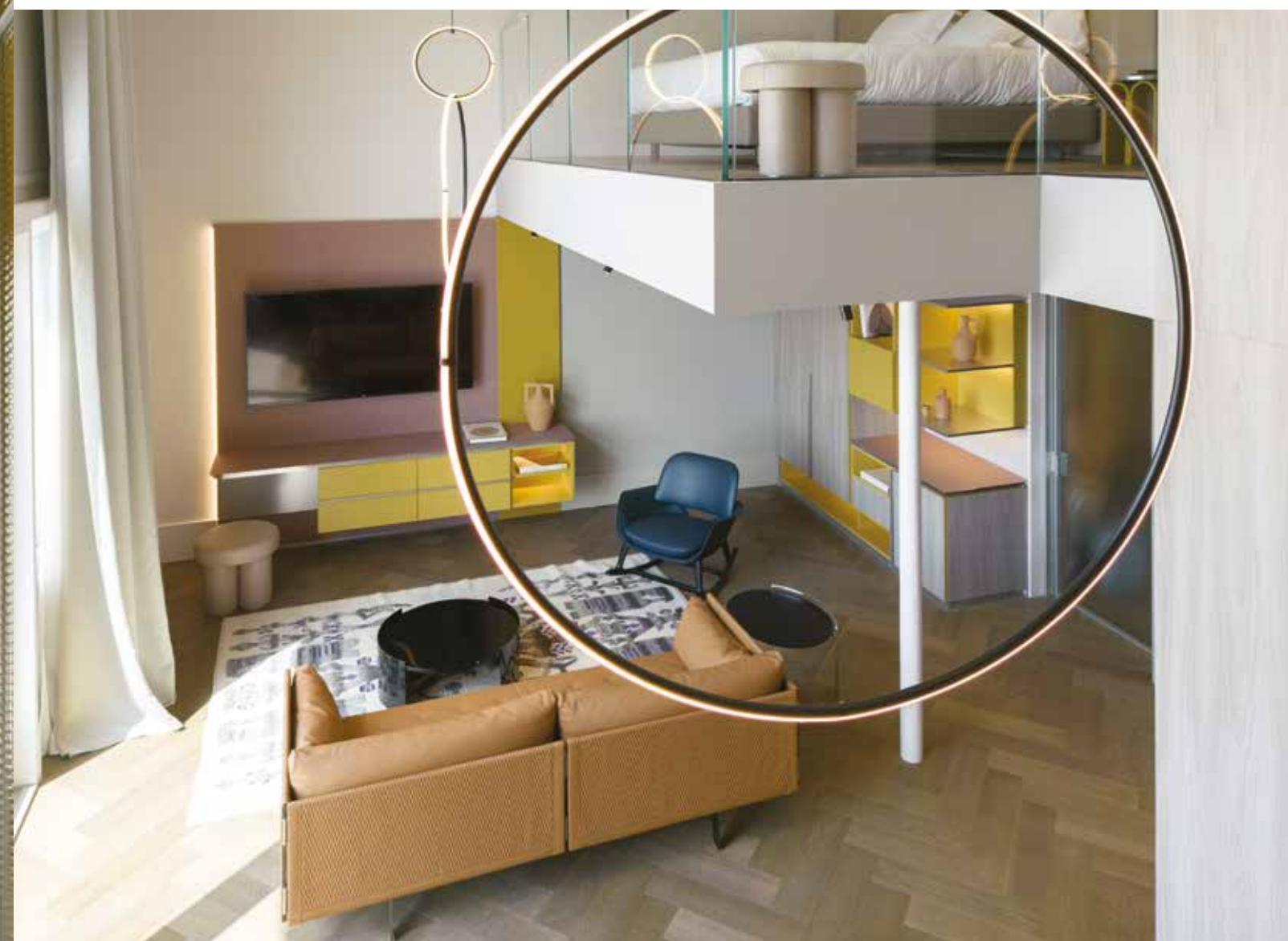




#### FOCUS ON PARQUET: PERGO IN PALAZZO TIRSO

The Pergo philosophy, based on constant research into new planning and technical advances, is in complete harmony with the planning approach in Palazzo Tirso. The merging of the use of natural materials and innovation is a common thread which has allowed the cultural and historic heritage of the building to be preserved. The Pergo Saltholm (in the chocolate version with oiled finish) was chosen for the bedrooms. The planks are 580 x 145 x 14 mm. with bevels on 4 sides which gives free flow to the imagination as there are two possibilities for laying: Italian herringbone or squared. The floating laying means that the technical needs of the plan in particular contexts can be fully met and the Pergo expertise in performance means that a true natural material like wood can be used in places under constant stress from hard use.

[pergo.it](http://pergo.it)



#### CUSTOMISED DESIGN

The interior of the new Gallery Palazzo Tirso has been custom designed with the décor largely exclusively personalised to integrate with the project concept.

This starts from the basement, the spa area, where the colour scheme has strong ties to local history. On the ground floor there is the reception, the bar and the Terra restaurant, an area dedicated to business.

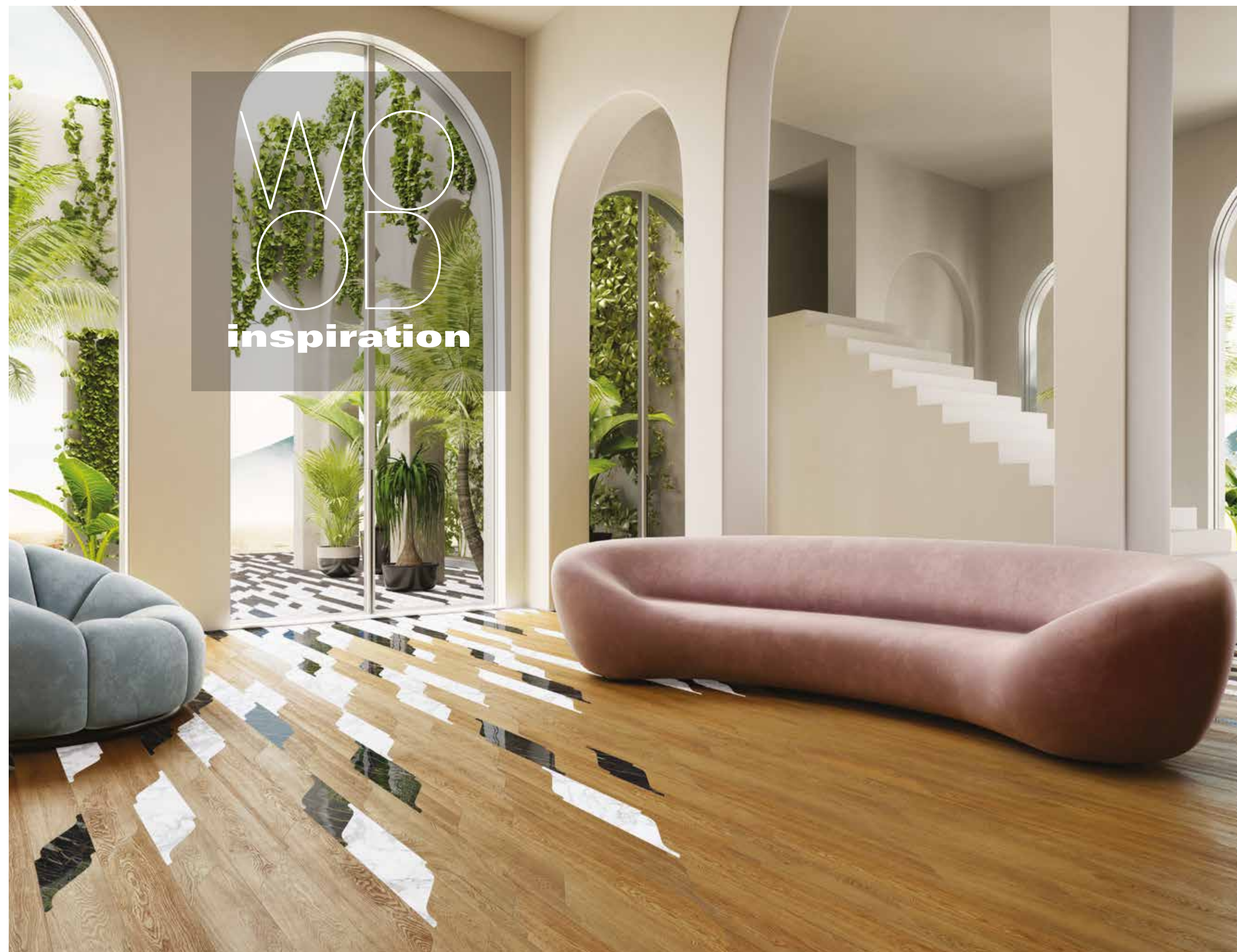
The upper floors contain 85 bedrooms, completely customised. Finally, the rooftop offers a unique experience in Cagliari - inside a glass gazebo there is the covered part of the Cielo restaurant which extends over the terrace with a bar and lounge area, offering a breathtaking view of the town.

#### SUSTAINABILITY AND ETHICS

The building has been restored with an eye to sustainability and ethics and following a path to optimise reduction, where possible, of the impact on the environment. Local or avant-garde materials, LED lighting and simplification which reduces consumption, technology which optimises resources, green architecture to reflect the local tradition have all been incorporated. The materials used have been subjected to surface processes to create new sensations when used. This approach produces an emphasis on the tactile dimension, inviting guests to explore and interact with their environment in a more intimate way.







## CORÀ

Corà means culture and passion for wood! With 100 years of precious presence in the market and four generations that harmoniously followed one another since 1919, it is the biggest timber trade and manufacturing company in Italy, supplying 6000 clients. Thanks to the long-lasting activity in supply markets worldwide (partner in Gabon, forest concessions in Africa) Corà has a total control of the production chain. The Parquet Division, founded in 1993, features the same values of the Company, especially the green attitude. With a continuous increase of the offer, that counts now on 150 products, Corà Parquet satisfies all the requests for retail and contract, both indoor and outdoor.

◀ *Miraggio is the innovative collection of high quality floor designed by Pininfarina for Corà Parquet.*

*The distinctive feature is the innovative amalgamation of wooden surfaces, typically warm and natural for indoor use, with stoneware elements, perfectly functional even for outdoor use. Through the perfect combination of both materials and flooring continuity, Miraggio eliminates the boundary between indoors and outdoors, and between different areas of the house, uniting spaces in one design.*

*It allows to customize the rhythm between wood and stoneware, as well as the laying geometry. For this reason, every project created with Miraggio is unique.*

**coraparquet.it**



# *Living on High*

The fascination of Itauba wood in the Torre Solaria, a building in the heart of Milan certified Gold LEED: 143 metres high with immense terraces, infinite light and a breathtaking view

FRANCESCA FERRARI





The Solaria & Aria building complex in Milan (situated at Porta Nuova at the crossroads of the Viale della Liberazione and Via Melchiorre Gioia), designed by Arquitectonica of Miami, is the highest residential building in Italy.

The Torre Solaria has 34 floors reaching a height of 143 metres and it has been designed to give its residents a breathtaking view from the cathedral steeples to as far as the Alps. The wide terraces on different floors give the building a fascinating profile which is enhanced at night by lighting the transparent balustrades. The external structure of the building consists of three

separate wings which converge on a central nucleus from which natural light flows to every floor. This design means every apartment has a view on three sides, while absolute privacy is also guaranteed. The nearby Torre Aria has 17 floors with 42 apartments.

Torre Solaria and Torre Aria are outstanding features of the new Milan skyline. They contain residences which go from compact two-room 70 sq.m. apartments to a larger penthouse and three-room homes with exclusive views. The whole complex has been built in accordance with the very latest building developments regarding sustainability and pollution reduction, which is how it

obtained the Gold LEED certificate. The two towers received an award in 2015 from the Society of American Registered Architects (SARA), and in 2019 the Merit Award of Excellence from the AIA Awards.

#### **A PRIVATE APARTMENT IN THE TORRE SOLARIA**

The design of the Torre Solaria (and the nearby Torre Aria) took into account the way people live in Milan and the wishes of the Milanese for their future homes: natural ventilation in every room, which means no need for air conditioning, and a lot of light from the triple or quadruple windows which means lights do not have to be switched

on during the day.

It is in the Torre Solaria, where reaching for the sky is combined with absolute privacy and the windows, suspended between earth and sky, give each apartment unparalleled access to daylight, that the apartment in this article is situated.

The Marco Piva architecture studio was commissioned in 2022 to design the interior of an apartment on the top floors of the tower for an important foreign client. The original layout was altered to meet the aesthetic and practical needs of the client, knocking down walls where possible and creating windows which gave the space





more light and fluidity. A dynamic space connected to the outside world to meet the functional needs of a modern businessman.

#### ITAUBA FOR THE TERRACES

Studio Marco Piva was commissioned to choose the best decking materials for inside and outside. A choice which was made with the greatest attention to detail starting from where materials came from, which trees, and ensuring that all the necessary certification was obtained for the client. The choice for outdoor flooring was the elegant, graceful

Itauba from Ravaoli Legname.

A timber originally from South America whose characteristics are a uniform fibre and shades which vary from beige to brown. An exotic species of timber which is durable and resistant and gives a warm and welcoming atmosphere.

The decking was laid using Ravaoli Legname's RemoClip system. Itauba is perfectly in harmony with the elegant, sophisticated style of this luxury apartment. The RemoClip laying system using the highest quality materials ensures a removable, resistant decking for any type of plank



#### THE PROJECT

**Site:** private apartment in the Torre Solaria, Milan  
**Design:** Studio Marco Piva  
**Exterior flooring:** Ravaoli Legname  
**Photo:** Andrea Martiradonna



# Masterpieces to highlight

## SKIRTING BOARDS

Only **PROGRESS PROFILES** offer you a complete range of skirting boards able to satisfy any technical, stylistic and functional need.

### Beauty that makes a difference.

New lines become part of the wide range of SKIRTING BOARDS in steel, aluminum and PVC. Wall wire for a modern style, or wood effect for the perfect match with any type of floor. Technology and beauty in tune to make a difference. Details that come to light, hard not to notice.



Proskirting  
Channel e Flat



Proskirting lsp 70/100



Proskirting List 40/80



Proskirting 40/80



Skirting  
40, 60, 80, 100 e150



Skirting 7011/7016



Skirting Ins/Line



Proskirting Shell



Rotating display for show room



Logic and irrationality mix to decorate residential or business environments,  
where life flows continuously blending action, thought and feeling.



TÉKNE

100% made in Italy since 1955

www.stile.com



# The warm elegance of **oak**



In this original apartment in Udine, the architect has played with contrasts and balance to direct the gaze through its rooms.

The wood floor plays a major role

FRANCESCA FERRARI





Rooms designed to reflect the lifestyle of the owner: functional flexibility, shapes, materials and colours have been chosen carefully to transmit calm and well-being. This was the aim of the architect Matteo Marcuzzi of ARCHMM Studio in the planning stages of the interiors of this beautiful apartment in the centre of Udine. The architect chose "timeless, controlled" geometric elements and neutral colours in shades of grey and cream to contrast with and enhance the natural materials like stone and wood. The only touch of colour is the ochre and green of the long hallway, repeated again in the armchairs in the day area. Wood is the key. We find it in the night area, in the divider between the kitchen and the living area and of course, in the floor. This is the unifying element which gives warmth and tranquillity to the apartment.







**THE WOOD FLOOR**

The parquet chosen for this residential project is in Neutral colour European oak (the MaxiTop model from the Friulparchet Natural collection). Its appearance adds comfort and cohesion to the different rooms in the home. Oak is an elegant, hard-wearing timber, used not only for its elegance, but also for its resistance, durability and capacity to balance environmental humidity.



**Friulparchet**

Friulparchet's story starts in 1927 and is the story of a family who have dedicated their lives for four generations to discovering all the secrets of working with timber and of making parquet. The craftsmanship in the attention to detail, choice of the best quality finishings, the careful selection of trees in their place of origin, are all aspects of their passion. The other fundamental element in developing the company has been the constant attention to innovation, which has led to the gradual development of technologically avant-garde production processes and awareness of the evolution of the world of architecture and interior design transferred into the development of modern, high quality lines. Friulparchet guarantee that their parquet timber comes from eco-sustainable forests and that the glues and finishes used are products which comply with the strictest health norms.

[friulparchet.it](http://friulparchet.it)





The apartment, located on a high floor of a building belonging to a prestigious residence, overlooks the Parco della Favorita, a great lung of the city of Palermo and among the largest urban parks in Italy, once known as the Real Tenuta della Favorita, commissioned by Ferdinand III of Bourbon in 1799. A place with a very high value because it is inside the city but immersed in the greenery and silence of nature.

The designed space was envisioned as a warm, welcoming environment that would reflect the great feeling of peace already strongly conferred by the natural context in which it fits. In harmony with the panoramic view of the expanse of greenery as far as the eye can see and the disruptive presence of Monte Pellegrino, an attempt is made within the designed space to create visuals marked by clean, rational lines but balanced with warm, muted tones.

#### THE DESIGN MOODBOARD

The design moodboard is characterized by mostly natural materials, in the desire to bring the surrounding nature into the designed space as much as possible, and thus the great protagonist is the wood in the floor and wall coverings and the use of warm tones and from the adjacent park and mountain colors in the kitchen finishes and in the bathroom wall and floor coverings, while dark glass in the bedroom and in some bathroom details lends elegance to the private spaces.

#### IN & OUT

The project started from the desire to make the most of the view over the large Favorita Park. The first gesture, therefore, was to mark a privileged direction, transversal respect to the entrance, suggesting that the visitor immediately turn his gaze toward the large windows on the park and instead closing in the opposite direction the view toward the rear project with frosted glass. The direction is marked by an equipped wall that rises from the ground to the edge of the exterior fixtures, indicating their importance as "frames" on the greenery, and that is disguised as white lacquered mdf cladding to act as storage or niches emptied by natural oak elements to offer seating or bookcase functions or even as a passageway between the living and sleeping areas. Such a block, which strongly characterizes the project concept, acts as a reference element for the claddings and furnishings of the entire living area, except for the kitchen, which deliberately detaches itself to act as a "green" counterfield to the "natural picture" as if it wanted to somehow mirror it by enhancing its value.

In the sleeping area, the elegance of the glass window with black aluminum profiles that

In Palermo, a minimal-style apartment overlooking the Parco della Favorita. A sartorial renovation project with a sophisticated atmosphere characterized by an important luminosity and the natural colors of the wood

FRANCESCA FERRARI

# House on the park

**House on the park**  
**Year:** 2022  
**Place:** Palermo  
**Project:** Studio didea  
**Typology:** Residenzial  
**Area:** 120 m²  
**Customer:** Private  
**Flooring:** Parquet Oak Naturalizzato, Berti Pavimenti in Legno  
**Photo credits:** Focale





divides the master bedroom from the walk-in closet stands out, characterized by a fixed portion in gray etched glass and two lateral sliding doors in gray glass, which allow the presence of the clothes to shine through, illuminated by a soft and sophisticated light here as well. Both bathrooms then are entirely clad in the warm and enveloping finishes of warm gray resins that recall the clay tone of the kitchen.

**ESSENTIAL OAK WOODEN FLOOR**

The wooden floor is the great protagonist. Chosen in the most genuine version, the light oak Naturalizzato from the Essential collection is a pre-finished brushed parquet with a matte finish. The matte parquet brings out all the naturalness of the wood by reflecting the light in a diffused way and without mirror effect; the wood brushing enhances the parquet texture for a sophisticated and enveloping final result. Thus, parquets with light and soft colors and visible and tactile wood grains, are ideal for a minimalist style.

**A SUSTAINABLE APPROACH**

Technologies that contribute to environmental sustainability have also been included within the project; in fact, some portions of the walls and ceilings in direct contact with the outside have been insulated with interior insulation systems that make it possible to reduce dispersion and thus the heat requirements to be met through the systems. Also the heat pump system with hydronic distribution, installed as the only system in the house, with fancoils and radiant floor distribution, allows, compared to the most common systems with gas boiler and split, a reduction of pollutant emissions into the atmosphere, greater use of renewable energy, increased comfort and energy efficiency.

**About Studio didea**

“Studio didea is an associated studio, which deals with architectural and interior design, in the residential and commercial sectors. Our design approach starts from a concept that expresses the potential of the place of intervention, to arrive at the final project through the choice of materials and finishes, the definition of the executive, the punctual choice of contractors and workers, and the supervision of works, in a constant confrontation with the client’s needs. Our work is finalized in the attention to detail and the design of all the elements that make up the designed space with a precision that is useful for craftsmanship”.

[studiodidea.it](http://studiodidea.it)







**About Berti Pavimenti in Legno**

Berti is one of the main companies in the national and international wood flooring sector. Berti's family, the company's founders, Mr. Giancarlo and his wife Rosanna and their sons Matteo, Andrea and Massimo have always been very careful to market's evolutions. Berti parquet, excellent finish wood flooring 100% Italian made, tastings and different atmospheres with a wide variety of styles. Being the first company in the world to study the application of laser technology to the inlaid wooden floor allows the creation of real artworks becoming an unparalleled reference point for this advanced processing technique. Thanks to the contribution of the laser, a simple wooden plank can become a refined work of art: tiny pieces of wood essence, combined and combined with taste, can give life to real masterpieces.

**[berti.net](http://berti.net)**





## ITALPROFILI

Resisting over time is our creed, which has guided us since 1976 in the design and manufacture of each product. The whole process takes place in our factory in the province of Venice: design, production, quality control and shipping.

Our range always guarantees a high-level service and stable performance over time, developing into 4 business units: adjustable paving support systems for raised floors, roofing accessories, accessories for foundations, accessories for cementitious waterproofing and liquid membranes.



◀ *Functional, versatile and modular. The adjustable Special Evolve support systems are designed to give a strong and self-leveling support for raised floors for exteriors.*

*They can be used with different types of flooring such as prefabricated slabs, porcelain, marble, stone, wood, composite wood.*

*They are equipped with an innovative self-leveling system, which allows greater stability in the laying of flooring.*

*Quick and easy to regulate, thanks to the regulating key or to the rotation of the base thanks to the new Locking Head system.*

*The material used for the production of the Special Evolve adjustable supports is polypropylene and additives to ensure long durability and increase load capacity.*

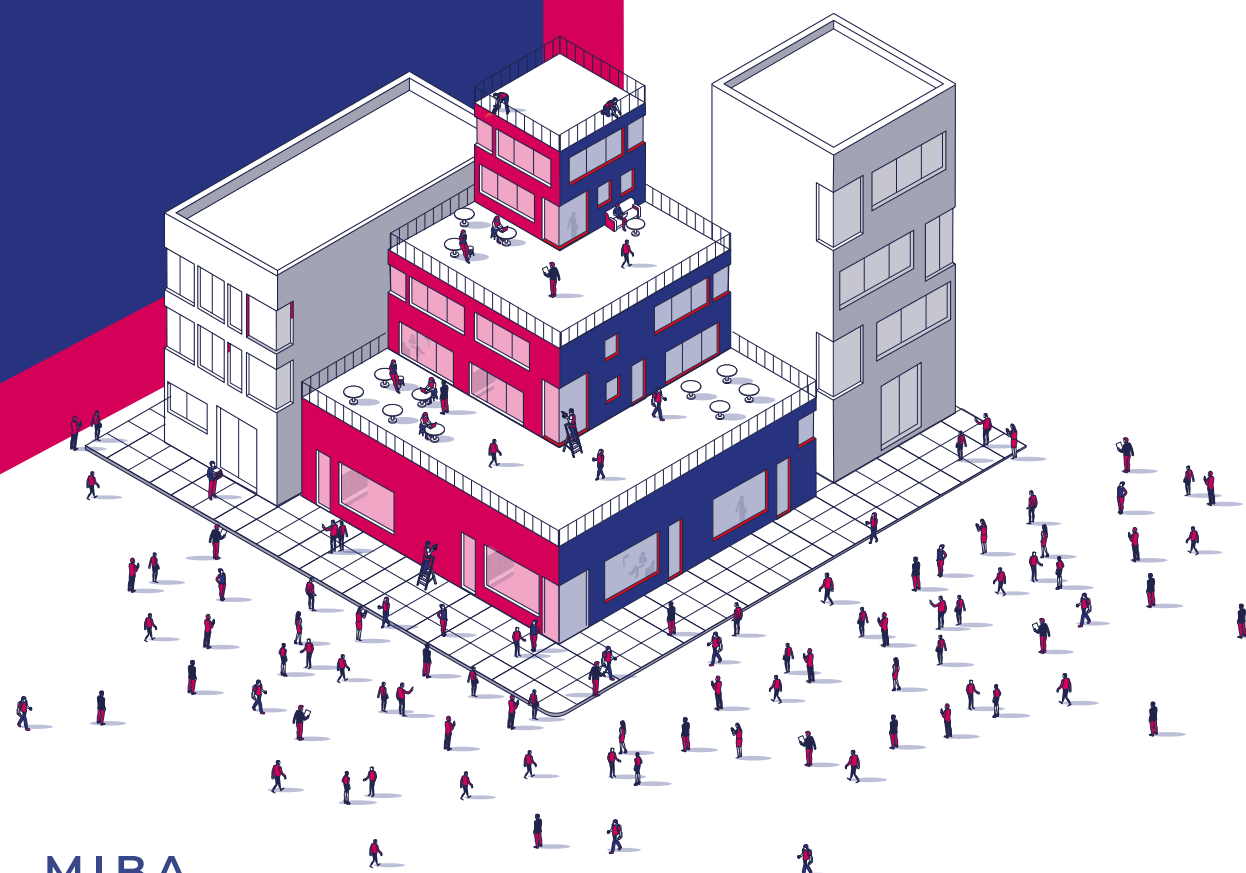
**italprofili.com**





## CONSTRUCTION EXHIBITION

-  Planning, BIM and Software, Services
-  Structures and Building systems  
Civil engineering and Infrastructures,  
Construction site tools and Safety
-  Energy requalification, Insulation and Comfort,  
Building/utilities integration
-  Interior and exterior Finishes and Coatings



www.madeexpo.it/en



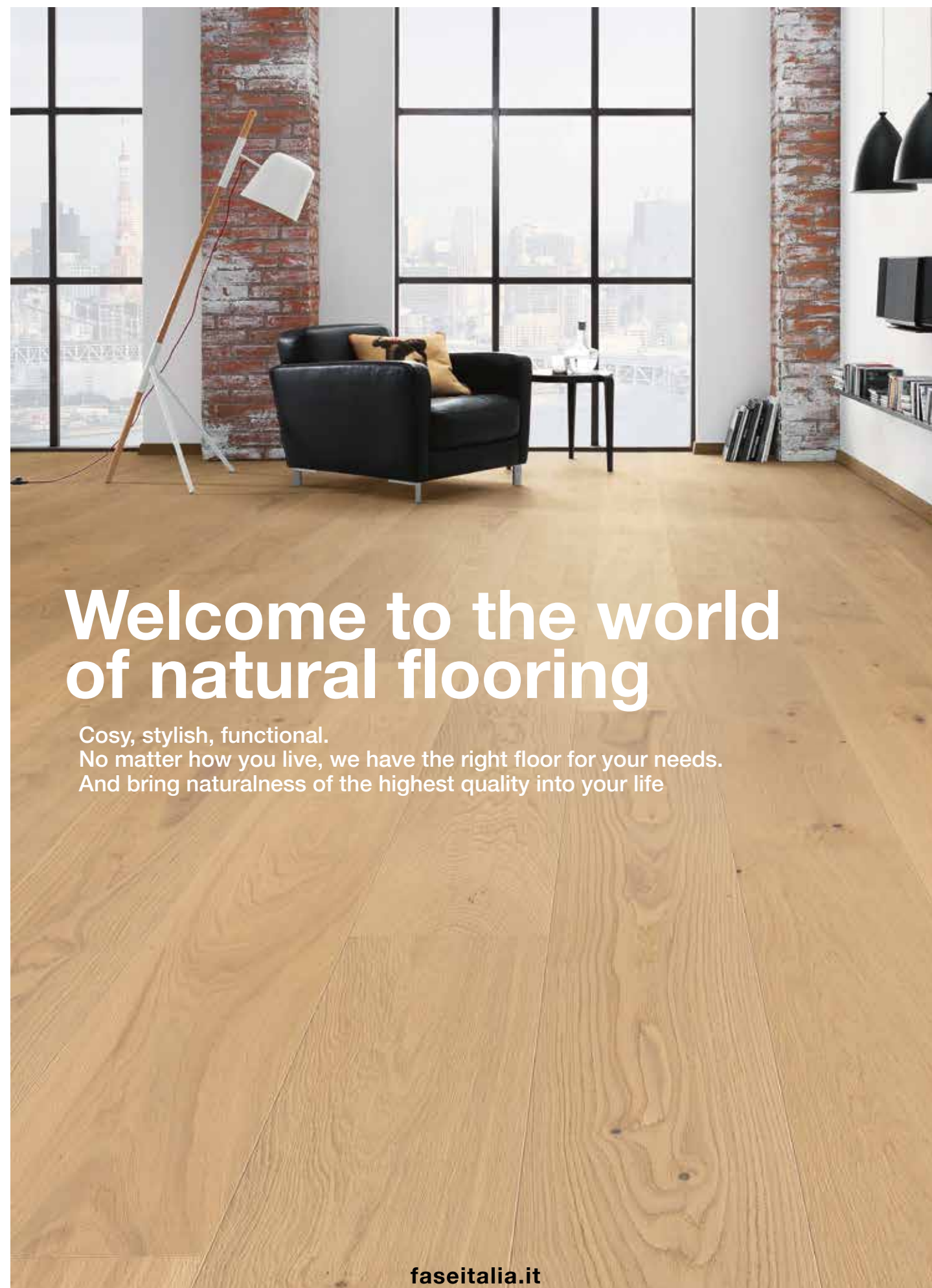
**MIBA**

MILAN INTERNATIONAL BUILDING ALLIANCE



ONE PLACE. FOUR EXHIBITIONS

madeitaly.gov.it



# Welcome to the world of natural flooring

Cosy, stylish, functional.  
No matter how you live, we have the right floor for your needs.  
And bring naturalness of the highest quality into your life

faseitalia.it



by **HARO**





# Nature in the city



A contemporary villa characterised by its architecture. Wood is the key element in its restoration with a floor specially created for the project

**TITO FRANCESCHINI**





They say beauty is made of contrast. This house demonstrates that. It is in Treviso in an elegant residential area where nature and city co-exist. The project was a contemporary villa where the precise lines of the design incorporate decorative and attractive elements of eye-catching splendour.

White is the defining element in the building, both inside and outside. But it is inside where the personal taste of the owner is evident in the use of wood as a fundamental element.

#### THE FLOOR

The floor was laid using a personalised choice. The Fiemme Tremila Bottega collection (which allowed the designer to create unique, unrepeatable ad hoc solutions) has the clear, light shade of Bianco 101, a colour created specifically for this project.

A brushed effect was chosen and the natural knots highlight the original beauty of the timber. The ample flooring space means the wood is shown to its best advantage throughout the house with its history shown in every slat.

#### THE ROLE OF WOOD

To speak only of floors is a misrepresentation because the same slats have been used for the stairs and to create an original piece of low furniture in the day area.

The table in the kitchen mirrors the house: a duo of nature and beauty. The legs are in pure lines while the wood top matches the floor. "Bringing naturalness to the fore: this is the idea of using wood throughout the house", say the architects. Wood also plays an important role in the garden, where there are sturdy, ancient trees.







**Project:** private residence  
**Location:** Treviso/Italy  
**Parquet:** Bottega di Fiemme  
Tremila/Bianco 101  
**Selection:** Knotty  
**Finish:** Brushed  
**Info:** [fiemmetremila.it](http://fiemmetremila.it)





## KERAKOLL

Kerakoll is a leading, B Corp certified, international Benefit Company specialising in sustainable construction. We offer global material and service solutions for buildings and lifestyles that respect the environment and human well-being. Kerakoll has enjoyed constant growth on the domestic and export markets for building materials ever since 1968, when Romano Sghedoni first formed the Group in Sassuolo, at the very heart of the world's largest ceramic production district. Today, our Group is undisputed leader in green construction thanks to internationally acclaimed technology.

◀ *Color Collection is the Kerakoll's brand collection of colors and surfaces for interior decoration. The Color Collection features a comprehensive range of eco-friendly decorative paints and resins for floors and walls, coordinated in a unique palette of 150 contemporary colors and 15 sophisticated surface textures in line with the most refined style trends of today. Microresina Parquet, water-based ultra-thin film. Ideal to decorate and protect Legno+Color floors and to re-design hardwood floors. Microresina Parquet allows you to renew old parquet floors in a contemporary way and to modify the colour of the wood directly on site. In this image: floor Legno+Color Large KK 120*

[color.collection.com](https://color.collection.com)





PACKAGING: 5 + 0,5 L

# OMEG-ART

Waterborne two-component  
polyurethane wood floor finish

## FOR VERY HIGH TRAFFIC AREAS

- Provides excellent abrasion resistance
- High chemical resistance
- Maintains the natural colour of the wood
- Also suitable for wood floor sport areas
- Easy to mix and to apply
- MED Certification

Available in:  
GLOSS SHEEN: about 80 GLOSS  
SEMIGLOSS SHEEN: about 50 GLOSS  
SATIN SHEEN: about 35 GLOSS  
MAT SHEEN: about 15 GLOSS  
NATURAL SHEEN: about 6 GLOSS - Only for clear wood  
EXTRA MAT SHEEN: about 6 GLOSS

NEW

NEW



SPECIAL EVOLVE  
THE NATURAL EVOLUTION  
OF THE ADJUSTABLE PAVING  
SUPPORT SYSTEMS

Giusella agency



New adjustable paving supports Special Evolve:  
functional, modular and self-leveling, suitable  
with any type of raised floors for exteriors



25 / 29 - 09 - 2023

DISCOVER  
ALL OUR NEW  
PRODUCTS AT  
CERSAIE 2023  
**PAD 32 - STAND B10**



www.italprofili.com  
info@italprofili.com





# A SURPRISE IN THE BASEMENT

A sophisticated space with all the elements of the good life. An air-conditioned space with a modern kitchen, dining room, sitting room and Spa. And a high-class floor which brings everything together

TITO FRANCESCHINI



Elegance, harmony of colours and shapes, clever use of lighting and the magic of wood have made this a really unique space. We're in a villa near Lake Garda. Our photographs show a 'basement', but this description does not do justice to a space which is sophisticated with all the elements of the good life. An air-conditioned cellar to store and taste wine, a modern, functional kitchen for preparing meals for friends, with a dining area. A living room to relax in after swimming in the heated swimming pool or taking a sauna, which are part of the spa, separated from the rest of the space by glass walls. The interior design has clean lines, broken up by colours which range over the sofas and the interior decor. The Firenze oak floor adds a classic and elegant note and is laid in Italian herringbone style with the characteristic right angle (90°) of the slats which make it up. Herringbone is one of the oldest floor-laying designs. It can even be found in the first century AD. The ancient Romans used it to lay the blocks of clay from which they built the roads. It started to be used for wood floors in the XVII century inside palaces and in the homes of upper class Italians.





**Plan**

- Project: interior design studio "Ligorio Paste architects"
  - Floors: Firenze colour oak laid in Italian herringbone by Garbelotto
  - Laying: Italian herringbone, with the characteristic right angle (90°)
- garbelotto1950.it**





## PROGRESS PROFILES

Progress Profiles is a world leader manufacturer of technical and decorative finishing profiles and fixing/laying systems, including membranes, for construction and interior design. For more than 37 years the Italian firm has been developing and patenting over 15,000 technical products and 21 systems, exporting them to more than 80 countries worldwide. The new Asolo (TV) headquarter reflects the entrepreneurial spirit of Progress Profiles, which looks to the future with full respect for the environment.

◀ To create floating floors from 29 to 1,000 mm high, quickly and easily, without having to demolish or remove the floors underneath, Progress Profiles offers the Prosupport Tube System, made up of a base, a sleeve, a screw, two heads and a set of tubes: the possibility of self-levelling or fixed installation simplifies the installation and makes it practical and intuitive. On the other hand, for floating floors from 10 to 40 mm high, the Prosupport Slim System is the perfect solution, with its 2 mm thick levellers that allow you to reach the desired height.

[progressprofiles.com](http://progressprofiles.com)



HOSPITALITY,  
NATURE AND RELAXATION

# Val S eriana

A resort immersed in the countryside, a project which strongly reflects its locality where the beauty of the surrounding nature is reflected in the indoor and outdoor architecture (thanks to the wood floors)

TITO FRANCESCHINI

Immersed in the greenery of Val Seriana, Piajo Resort has been designed to maximise the relaxation and well-being of its guests. Over 500 square metres are dedicated to its spa and wellness centre using an innovative, practical design made up of colour, tactile and olfactory sensations. Hospitality is organised around a restaurant, a Spa and areas for meetings and weddings.



**BGP GROUP**

The BGP Group was established twenty years ago on the thirty-year experience of its founder Luigi Giudici who until 1999 had travelled throughout Africa, America and Hungary to learn about all the small details of the world of timber and its workings. On his return to Italy, he founded the BGP Group, 100% from Bergamo. For a little more than 10 years, the company has been in the hands of Georgia and Giovanni, Luigi's children, who have followed in their father's footsteps while also breathing new life into the company. Thanks to commitment and teamwork, the BGP Group is one of the most important Italian producers of wood floors for indoors and outdoors. It has about 500 parquets, organized in lines and collections for marketing, like Gaia and Annoni & Perego. The company has 45 employees, a marketing office, a technical office, a warehouse and a logistics headquarters in Alzano as well as about fifty representatives in Italy and abroad.

**bgptrading.com**

Piajo Resort is a regenerative experience for body and soul. With superb views, the resort dominates the Val Seriana (an Alpine valley in the province of Bergamo, where the river Serio flows through) and its natural landscape.

**A DIFFERENT PARQUET FOR EVERY SUITE**

Recently renovated and extended, this exclusive resort

has used the warmth and charm of wood for its indoor and outdoor surfaces. There are 700 square metres of suites and 450 of outdoor spaces. The BGP Group from Bergamo was involved in the planning and production of all floors.

Indoor spaces, particularly the resort suites, are characterised by contemporary highlights and elegant, refined touches. The wood floors create a welcoming

and elegant atmosphere.

To guarantee exclusivity and uniqueness to every guest, the planners opted for a different parquet in every suite. Customization was not limited only to the use of different timbers but also included the geometry of the laying for a dynamic interior sweep in harmony with the colours of the building and more generally with the architectural design.

The BGP Group was responsible for customizing and designing every element of the work from choice of products to floor laying patterns.

**EUCALYPTUS FOR OUTDOORS**

In total harmony with the atmosphere of well-being which permeates the whole structure, the resort has chosen Weathertex (the eco-building material for





ventilated surfaces and interior spaces distributed exclusively in Italy by the BGP Group) for its outdoor spaces.

Weathertex planks are made from eco-material based on eucalyptus timber from PEFC certified forests treated solely with paraffin wax and with no other added chemicals. They are resistant to UV rays, high and low temperatures, atmospheric elements and aging with a natural, elegant and welcoming appearance in keeping with the resort's philosophy and with its architecture.

#### A WORD FROM THE DESIGNERS

*"Every space has been studied down to the finest detail in this resort, with the desire that all spaces are in total harmony with each other. BGP Group worked on the*

*interiors, that is on all the suites, and on outdoor spaces where we needed to find natural solutions which were also elegant and refined. Therefore, we worked on the production and supplying of the chosen materials which were specifically designed to guarantee the personalization of the geometric laying. Working with the client means finding specific, personalized solutions in terms of aesthetics, performance and design needs. This type of cooperation comes from the craftsmanship of our carpenters which allows us to meet all the needs of architectural planning with a perfect combination of tradition, research, customization and innovation".*

These are the words of Georgia Giudici, the marketing manager of the BGP Group.

#### PARQUET

The choice for the suites was made from the Vesuvio collection by Gaia in French Oak and from the Naif collection in an elegant walnut colour from the Antica Falegnameria Annoni and Perego, a BGP Group brand. Flooring 100% made in Italy, in European oak with birch supports. The NAIF 15 collection is characterised by the water-based pigment-free surface paint which gives the wood an unfinished, natural look. Its planks are brushed and the veining can be felt by hand. Every phase of the parquet laying is crafted in the Clusone workshop in the province of Bergamo.





# The art of restoration

Approaching an antique floor requires great respect, attention to detail and a profound knowledge of timber. An expert with a capital E tells us about it

**FABIO BRAGA**

## DISCOVERING WOOD FLOORS



In my long association with I Love Parquet, I have spoken about many different topics related to wood floors, but one of the most interesting to me is the restoration of an antique wood floor.

### INITIAL PHASES, SIGHT AND TOUCH

When we approach the restoration of an antique wood floor, we start with a thorough analysis of its origins to understand the general context it belongs to. It's like listening to the floor to understand its aesthetics and the fine details which tell us when it is from. An antique floor reveals itself to us through its essence, the type of timber used and how it has lived.

What do I mean by this?

Our first approach involves two of our senses: sight and touch. When we look at an antique floor, we evaluate the laying techniques used and the structural characteristics of the floor, observing its imperfections in detail and any pieces that are missing or worm-eaten.

Finally, when we touch the floor, we do it to understand the thickness which has remained in order to decide on the type of restoration to execute.

### THE FIRST RESTORATION PHASE: SOME EXAMPLES

After the careful visual and tactile inspection, we can start on the restoration of the floor. All the carpentry work necessary to ensure the stability of the parquet and restore it to its original integrity is carried out. Let me give some practical examples: as a result of flooding or water infiltration, there is bound to be some rotten timber or raised slats which need to be fixed into position or replaced. This situation is often found in French windows where rain has infiltrated. The wood in these areas will be grey and the slats swollen. Parts irreversibly damaged by xylophages (woodworm) can be removed and replaced.

Cracks are repaired and glued. Any gaps are closed and reconstructed. Missing inlays are replaced using appropriate techniques. Cracks between the slats or planks are repaired using wood insertions (or filler, if the cracks are small).

When restoring a wood floor, it is important to check if there is any movement when walking on some areas. To fix this, it is necessary to dismantle the floor and check the





underlying beams. If necessary, all or part of the floor is taken up to work on the joists and make repairs or reinforcements. In this case, we create a map of the room and catalogue every piece of parquet to lay it again in its original position.

#### REMOVAL OF OLD VARNISH

Old varnish can be removed in two ways:

- With paint remover
- Sanding

The first option is used on antique floors which have already been aggressively sanded in previous restorations. The thickness of the inlays, or the parts in noble wood which have been glued onto the base panels, varies from 3 to 5 mm. Sanding with coarse sandpaper can take away millimetres of wood and noticeably reduce the thickness. In this case, we must use chemical varnish remover containing solvents with suitable equipment which does not harm the timber.

The second option is valid for all other cases. When we are dealing with restoration of antique parquet, we

must sand with caution and respect to reduce the reduction of the thickness to a minimum.

#### THE FINAL TOUCH

Before the final varnishing, all the new pieces of wood used in the carpentry phase are coloured to match. This is done using shades of water or natural oil colours with high light resistance. For the varnish we prefer natural resins, oils and waxes or wax lacquer. We know from historical records that varnishing of wood floors was carried out using similar materials in the last centuries.

Oils and resins highlight the beauty of the veining and colours of the timber and maintain its soft look. The latest products continue to have these characteristics and in addition have better durability and performance. In conclusion, restoring a floor in old timber is a job which requires careful attention to detail and great respect for the existing floor. It is a long, delicate process which has the objective of restoring the original condition of the floor, highlighting its beauty and the distinctive elements of its time.



## ASSITO DELLE ALPI

The **Assito delle Alpi** collection is Italtarchetti's flagship range: it is a large prefinished plywood product that is 15 mm thick and suitable for laying on floors with underfloor heating. **Assito delle Alpi** consists of a layer of top-quality solid wood glued onto birch multiply; this combination is stable and easy to lay, even on floating floors. Its finish with water-based varnishes and natural oils makes this a very strong and healthy parquet floor. The different widths and lengths available offer multiple solutions so you can adapt your flooring to the style of your home.

**ASSITO DELLE ALPI** | Teak - premium - Brushed UV oil finish



ITALPARCHETTI

Via Aleardo Aleardi, 77  
31029 VITTORIO VENETO (TV)

Tel. 0438 500 939  
Tel. 0438 501 464  
Fax 0438 501 461

info@italparchetti.it  
www.italparchetti.it

MADE IN ITALY

Arch. Lino Restucci  
Studio Progettati Interior Design





# FEP has launched

# ITS PARQUET REFINISHABLE PROGRAM

**A voluntary certification program born to identify parquet products with wear/top layers thick enough to be refinished and produce a list of certified refinishable parquet products**

FEP Parquet Refinishable Program is a voluntary certification program administered by the European Parquet Federation (FEP). The program is designed to identify parquet products with wear/top layers thick enough to be refinished, and produce a list of certified refinishable parquet products to aid manufacturers, distributors, specifiers, and end users in their decision making processes. The aim is to promote parquet which is at least twice resandable thanks to its minimum 2.5 mm real wood top-layer (finished or unfinished upper layer made of solid wood intended to be the visible side when the floor is installed). By this initiative, FEP wants to put forward this inherent

advantage of parquet compared to other floorings. Parquet is a long-life wood product whose durability can be extended through refinishing (sanding a previously finished floor to bare wood and applying new stain or finish). Refinishing also allows renovation - the process of renewing the appearance by sanding and coating without modifying the installation - to update colour and style. FEP would like to bring the consumer's attention on this possibility.

#### THE PROGRAM IN DETAIL

The definitions used in the Program are based on EN 13756 'Wood flooring and parquet - Terminology' and ISO 5323 'Wood flooring and parquet - Vocabulary'.

The manufacturer must be a member of FEP in good standing, should have its headquarters and production in Europe, prove that it has a sufficiently large production and that it manufactures parquet floors in accordance with approved standards in Europe. Although this Program was developed primarily for multilayer parquet products, wood flooring products that fall into the solid parquet definition are eligible. Unfinished parquet shall have a minimum top layer thickness of 3.2 mm and factory finished parquet shall have a minimum top layer thickness of 2.5 mm. Sculpted/distressed parquet shall have a minimum top layer of 2.5 mm, and be evaluated on a product-by-

product basis due to the variation in the surface wear layer of these products. The product must be installed according to the manufacturer's installation instructions and the manufacturer must recommend the attachment of the parquet product to a subfloor as an acceptable installation method. The end user must use the flooring product for its intended use, maintain temperature and humidity levels year-round, and follow a maintenance routine using proper maintenance products as required by the flooring and finish manufacturers.

#### FEP AND NWFA

This Program has been developed in cooperation with FEP's North American colleagues from NWFA - the National Wood Floors Association - who have recently launched their NWFA Engineered Wood Flooring Refinishable Program. In order to encourage an international norm, both programs are aligned. Consequently, FEP may offer certification reciprocity for products certified by associations/federations outside of Europe that administer refinishability certification programs that substantially align with the FEP Parquet Refinishable Program. For instance, manufacturers who certify products to the NWFA's Engineered

Wood Flooring Refinishable Program can apply to participate in the FEP's Parquet Refinishable Program and reversely. The NWFA version of the logo can be used in Europe by eligible NWFA members if they join the FEP Refinishable Program for non-FEP members. Eligible FEP members can use the FEP version of the logo in North America if they join the NWFA Refinishable Program.

#### THE FIRST MEMBERS

At the time of writing this article, the following FEP members have already joined the FEP Parquet Refinishable Program: Admonter, Barlinek S.A., Ciambella Legnami srl, FB Hout B.V., Muebles y Maderas de Nueva Linea SL, Scheucher Holzindustrie GmbH and Stile Società Cooperativa. Others are in the process to be certified. More details are given in the "FEP Refinishable Program" available on [www.parquet.net](http://www.parquet.net). Should you be interested by this initiative, do not hesitate to contact FEP: [info@parquet.net](mailto:info@parquet.net).





# There's a house in the woods...

Casa dei Racconti is a small relais immersed in nature, obtained from a country house from the early 1900s. A "raised" eco-friendly outdoor patio was recently built next to the pool

FRANCESCA FERRARI

Hidden among fields and vineyards in a bright and peaceful setting, "Casa dei Racconti" is located just a few kilometres away from Venice and Treviso and is a small country relais with six rooms, a kitchen that offers dishes from the local cuisine and an elegant outdoor infinity pool.

This gorgeous retreat, far from the hustle and bustle of everyday life, offers its guests a relaxing and tranquil experience.

The property was converted from an early 20th century country house into a small hotel that calls to mind the inns of the past.

Casa dei Racconti is surrounded by a natural wood, where the guests can go for pleasant walks and discover the local flora and fauna.

They can also explore the vegetable garden, where the vegetables used for the dishes prepared by the restaurant are grown, or enjoy a relaxing swim in the swimming pool.

## AN ECO-FRIENDLY PATIO

The work carried out in this place surrounded by greenery included the construction of a 125 square metre patio near the swimming pool.

A space designed not only for moments of relaxation thanks to the outdoor furniture, but which can also be used for parties and events where more foot traffic is expected.

Before starting the construction of the patio, the owner paid particular attention to environmental sustainability when choosing the materials to be used. Instead of resorting to traditional methods requiring the use of concrete as a base, the property chose the Deckofix support for raised floors by Impertek was chosen.

*Courtesy of Casa dei Racconti*



## ILOVEPARQUET

Deckofix is a support that is installed directly on the ground and ensures the perfect flatness of the floor thanks to its levelling head. Each support has a load-bearing capacity of 800 kg, can be adjusted in height from 35 to 250 mm and the screw

can go as deep as 70 cm into the ground. For this project, 120 Deckofix elements were perfectly installed using special tools, such as the Deckodriver and the Deckotool positioner, which can be hired from Impertek.

This method not only reduces the environmental impact of the system, but also ensures fast and simple installation and easy removal. In fact, once removed, Deckofix leaves no trace in the environment and it can be completely recycled.



### DECKOFIX: PAVILEGNO WITH IMPERTEK

Deckofix offers many advantages: first of all, it is a valid alternative to the use of concrete, which requires more resources and can be harmful to the environment. In addition to this, it makes the soil more permeable by allowing rainwater to drain naturally into the ground. This helps preserve the ecosystem and promote the health of surrounding trees and plants. After installing Impertek's Deckofix supports in the ground, the company Pavilegno by Stiven and Andrea Tamai (San Donà di Piave, Venice), in order not to suffocate the roots of the trees with a pouring of concrete, designed a cutting-edge solution in collaboration with Impertek. Pavilegno created a substructure with an autoclave-impregnated glued laminated timber joist, followed by a fir structure treated directly on site with tar. For greater stability and strength of the raised floor, considering its use for events and greater foot traffic, a substructure with aluminium rafters was also built. The work was completed by laying gorgeous Ipe Lapacho natural wood planks for outdoor use. The result is a beautiful raised floor surrounded by southern ash trees and in perfect harmony with its surroundings.

[impertek.com](http://impertek.com)



Dynamic surfaces designed by

*pininfarina*

**Corà**

CERSAIE - HALL 22 / B102





GAIA

parquet master

