

I LOVE PARQUET

INTERNATIONAL

www.iloveparquet.com

n. 27

December 2021

IT ALL BEGAN
WITH A PIECE
OF WOOD...





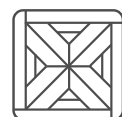
T +39 0438 580348 - info@garbelotto.it - www.garbelotto.it

Since 1950 we have been producing 100% Made in Italy wooden floors of great quality and beauty. Clip Up System® allows you to replace a single board in a few seconds. Perfect for any public environment such as offices, shops, restaurants, gyms, hotels, private homes, for raised and inspectable floors. With high acoustic comfort, available in different sizes, wood species, surface finishes and customizable.

CLIP UP®
SYSTEM

PATENTED LAYING SYSTEM

Available for herringbone and quadrotte laying



AgBB



VOC



Acoustic comfort



Acoustic comfort



E1 HCHO



FSC



FSC



Eco Friendly

Look for FSC® certified products

Everybody would like a splendid wooden floor, but each room needs the correct, sustainable products to guarantee they last a long time. **Ultracoat Renew FL primer for wood flooring** is the best choice for restoring your wood without sanding and without removing the old finish.



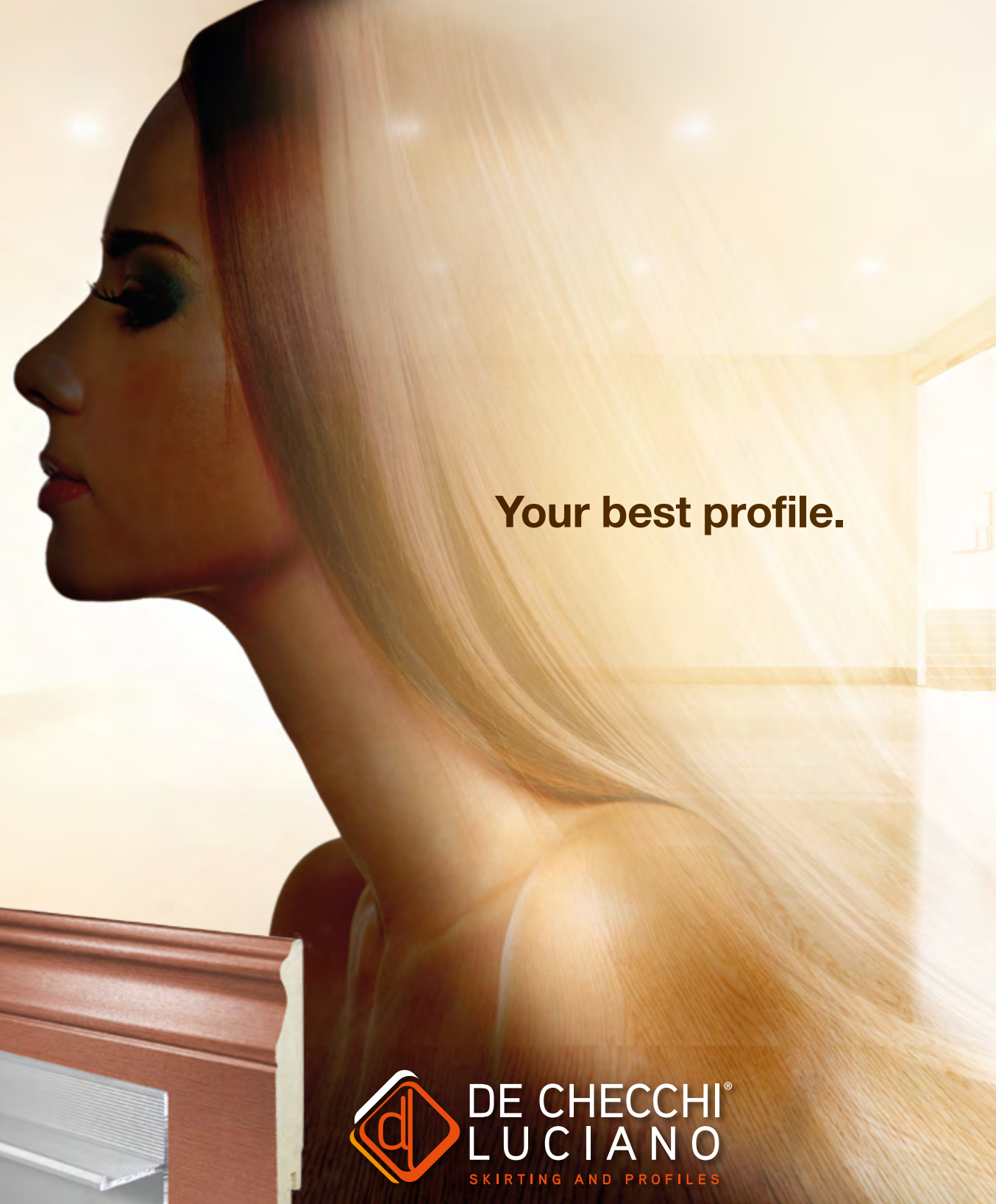
EVERYTHING'S OK WITH MAPEI

Learn more on mapei.com



ITALIA
LA BELLEZZA UNISCE LE PERSONE
BEAUTY CONNECTS PEOPLE
الجمال يجمع الناس

Partner of Italy Pavilion at Expo 2020 Dubai



Your best profile.

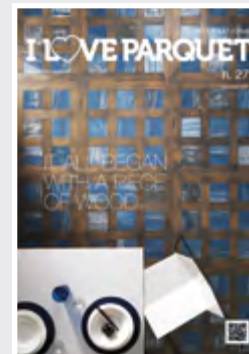
**DE CHECCHI[®]
LUCIANO**
SKIRTING AND PROFILES

UNYDECO[®]

Technical profiles for finishing
flooring and coverings

Designed&Made
inItaly

www.dehecchiluciano.com
www.unydeco.com



COVER BY
Parquet In
parquetin.com

Editor
4PUNTOZERO Srl
Via Console Marcello 8 - Milano
Tel. +39 02 39265461
Fax +39 02 45497579
info@4puntozero.it

Editor in chief
Federica Fiorellini
fiorellini@4puntozero.it

Editor
Davide Vernich
vernich@4puntozero.it

Editorial staff
Anna Baroni, Franco Bulian, Tito
Franceschini, Eleonora Mazzola,
Chiara Merlini, Clara Peretti

Art Direction
Cremonesi & Co Srl
info@robertocremonesi.it

Layout
Giuliana Garlaschelli
garlaschelli@robertocremonesi.it

Advertisement Director
Luciano Dorini
dorini@4puntozero.it

Accounting and Administration
Lara Papetti
lara@4puntozero.it

Secretariat
Jacqueline Davis
info@4puntozero.it



4puntozero srl, the authorised processor
of data of those receiving this publication,
points out that the purposes of such
processing make it possible for this
magazine and/or others it publishes to
be sent which is to facilitate the update
of technical information. Copyright for
all material published in I Love Parquet
International remains with 4puntozero srl

Supplement to I LOVE PARQUET
Magazine N. 48, Dicembre 2021

I LOVE PARQUET

Contents

- 9 Editorial - Federica Fiorellini
- 10 Agenda - Davide Vernich
- 14 NewsRoom - Davide Vernich
- 22 A new living concept - Francesca Ferrari
- 18 Oh my wood! - Tito Franceschini
- 20 Paramount Office Space - Francesca Ferrari
- 28 Maison magic: contemporary classicism
- Tito Franceschini
- 32 Getting to know timber: Cherry - Gianni
Cantarutti
- 34 Showcase
- 42 The FEP pages: European parquet
manufacturers navigate between high demand
and tight supplies - By european federation of
the parquet industry
- 46 Emissions of volatile organic compounds from
wood and its derivatives - Franco Bulian
- 50 Why is green good for health? - Fabio Braga



Wood you like ?

The main feature of **Castelli Romani** collection is an antique flavor called "Excavated Effect", a particular surface treatment obtained from a balanced mix of coarse cracks, large open knots and filled and real more or less deep furrows which, combined with the base of Oak aged, give it a unique appearance, markedly "rural", but that creates a perfect contrast between the craftsmanship of the past and manual environments design minimal contemporary style.



www.originalparquet.com

ORIGINAL PARQUET[®]
IL LEGNO DI QUALITÀ DAL MONDO

HQ - FACTORY via Dell'Artigianato 18
SHOWROOM via Del Lavoro 4
48011 Alfonsine (RA) - Italy
ph. +39.0544.80696



MAKE THE BEST CHOICE
TO BUILD THE FUTURE.

FRIULPARCHET
PASSIONE ITALIANA PER IL LEGNO

Wood floors since 1927

It's been 15 years since we have started an awareness campaign focused on reforestation, from that moment our attention has been turned to eco-environmental problems and to the future of the green sources of our planet. Idea is very simple:
replant the same quantity of trees needed to produce our wood floors.

MY GOOD RESOLUTION



I've been doing a lot of thinking during the long periods of school closures for Covid. In the weeks, sometimes months, of distance learning (which saw me photographing exercise books, transforming photos into pdf files to send to the teacher on duty and sacrificing my mac for the lessons when my nine-year-old's tablet gave out) I took part in an interesting debate on the 'mums' chat'. More than a debate it was a chorus of complaint: not a few said the commitment needed for teaching the children was too big,

there was too much homework, too many online meetings, too many deadlines.

Personally I found it difficult to manage and the double workload exhausted me, like the novelty of it all exhausted my nine-year-old. On the other hand, if this pile of work had not been there, I would not have seen the progress I saw every day. In short, I realised that lowering the bar is never the solution as it certainly does not encourage you to jump higher. I have returned to this thought during these last days of December, days in which we usually take account and make good resolutions for the new year. So, my resolution for 2022 is to not lower the bar. To not be satisfied, but to continue to study and to look around me, to be passionate and to commit myself to improving everything I do (this journal is an example).

It is an effort that we would often rather not make, but growth is not only for the young, it is for us too.

**Saul Steinberg
Milano New York**
Triennale Milano,
Milan october 15, 2021
march 13, 2022
triennale.org

SAUL STEINBERG MILANO NEW YORK

The exhibition, curated by Italo Lupi and Marco Belpoliti with Francesca Pellicciari, and put on together with the Electa publishing company, celebrates the city of Milan, where Steinberg lived and to which he dedicated many of his works. The display includes a series of pencil, ink and watercolour drawings, paper masks, objects, and sculptures, as well as documents and photographs, selected with



the assistance of the Saul Steinberg Foundation and other important institutions, as well as Steinberg's friends and collectors.

**ARCHITECT
@WORK**
POLAND

Architect@Work Poland
Global Expo Fair and
Congress Centre, Warsaw
30 - 31 march 2022
architectatwork.pl

AN EXCLUSIVE TRADE EVENT FOR ARCHITECTS

Design and experience are the key words of the event, which thrives on specific qualities that are difficult to associate with others in the sector: direct contact, in the space of the booth, between specifier and manufacturer, networking in the lounge areas created between the various exhibition blocks,

immediate operability of the proposals, both in terms of novelties and updates. Architect@Work Poland is an exclusive trade event for architects and interior designers with over 200 product innovations, selected by a judging panel of architects and interior designers, showcased in a unique lay-out.



Long lasting renovation without sanding down or replacing the floor

- Multi-surfaces: all wood floor finishes, laminated floors and PVC, vinyl, LVT floors
- Conceals scratches*, revives tarnished floors
- Single coat system
- Perfect adhesion, excellent grip, without primer
- High chemical and scratch-resistance
- 2-component with hardener

*Surface wear & tear: regular use and small scratches



More information at
www.carver.it

CARVER
by **Blanchon**
GROUP



Batimat 2022
Paris Porte de Versailles,
France
3 - 6 october 2022
batimat.com

THE CONSTRUCTION TRADE SHOW
For over 60 years, Batimat has been a major hub for construction and architecture professionals. The biennial fair is usually scheduled in odd-numbered years, but the unprecedented circumstances of the coronavirus pandemic led to its postponement. BATIMAT 2022 will instead run on 3 – 6 October 2022 at Paris expo Porte de Versailles. The fair schedule will once again be

shared with Interclima and Idéobain, creating exciting business synergies between the construction, energy and bathroom and interior design sectors. Every two years, Batimat brings together over 1,700 exhibitors who present a wide range of offerings, including novel indoor and outdoor fittings, construction technologies, worksite equipment, and design solutions. The exhibition draws in more than 320,000 contractor decision-makers and construction, prospection and distribution professionals who are looking for the latest innovations that will drive the future of building and construction.



33.BI-MU and Xylexpo
FieraMilano-Rho
12 - 15 october 2022
Xylexpo.com

A "PREMIUM" EVENT
The topics of digitization and sustainability will characterize the next edition of BI-MU and Xylexpo, the events organized by UCIMU-SISTEMI PER PRODURRE, the association of Italian manufacturers of machine tools, robots and automation, and by Acimall, the association of woodworking machinery manufacturers, to be held from 12 to 15 October 2022 in the fieramilano- Rho expo center. The two events – 33.BI-MU (biennial exhibition of machine tools, robotics and automation, additive manufacturing, digital and auxiliary technologies) and Xylexpo (biennial exhibition of processing technologies for wood and components for the furniture industry) – will

cover eight halls in the West area of the fieramilano-Rho district. Halls 9, 11, 13 and 15 will be assigned BI-MU; halls 14, 18, 22 and 24 to Xylexpo. BI-MU and Xylexpo, two distinct but complementary events merged into a single large container where operators from all over the world will find technologies, equipment, services and ideas to produce in an increasingly sustainable and efficient way, according to the principles of "Industry 4.0". BI-MU and Xylexpo together will give life to the week of instrumental mechanics, attracting to fieramilano-Rho all manufacturing industry operators who will be able to combine the visit to both exhibitions with a single trip.

www.progressprofiles.com

Una nuova evoluzione nel segno della flessibilità, innovazione ed efficienza elettrica

BREVETTATO



BREVETTATO

002748822
EP 3,183,505 B1
US 8,176,694 B2
US 9,188,348 B2
US 9,416,979 B2
US 9,518,746 B2
US 9,625,163 B2
US 9,719,265 B2
US 9,777,931 B2
US 10,108,505 B2
US 10,006,644 B2
US 10,215,423 B2
US 10,408,469 B2
US 10,712,020 B2
US 10,739,016 B2
Patents Pending

PRODESO® HEAT GRIP SYSTEM

Il sistema è costituito da tre elementi; **PRODESO HEAT GRIP MEMBRANE, PRODESO HEAT GRIP CABLE e PRODESO HEAT GRIP THERMOSTAT KIT**. La membrana in polietilene, con funzione desolidarizzante, impermeabilizzante e sfogo vapore, ha uno spessore di soli 8,5 mm ed è provvista inferiormente di un tessuto non tessuto in polipropilene termosaldato che ne garantisce il fissaggio al supporto. La nuova geometria della membrana, oltre ad assicurare un perfetto ancoraggio del cavo scaldante, garantisce una resistenza allo strappo del pavimento 5 volte superiore rispetto al vecchio modello PRODESO HEAT. I cavi, di ultima generazione, sono formati da tante resistenze, lunghe 60 cm, montate in serie. In caso di danneggiamento del cavo quindi smette di funzionare la resistenza danneggiata e non l'intero cavo. Il termostato, di ultima generazione, si interfaccia con dispositivi Android ed Apple; ciò consente di programmare tutte le sue regolazioni ed impostazioni anche a distanza utilizzando una rete WIFI.



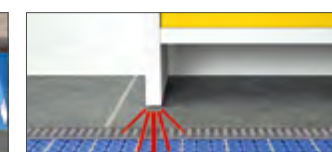
DESOLIDARIZZAZIONE



IMPERMEABILIZZAZIONE



SFOGO DEL VAPORE



DISTRIBUZIONE DEL CARICO



DIGITAL WI-FI

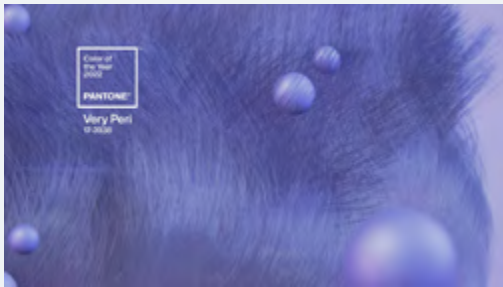


WI-FI



PANTONE’S 2022 COLOR OF THE YEAR IS VERY PERI

Very Peri, described by colour company Pantone as “a periwinkle shade of blue”, has been named colour of the year for 2022. The purple hue was informed by the rise of the metaverse, as well as the impact of coronavirus lockdowns. Pantone, the company that sets one of the most widely recognised colour standards, says that the colour marries the “constancy” of traditional blue with the “energy and excitement” of red. “As we move into a world of unprecedented change, the selection of Pantone 17-3938 Very Peri brings a novel perspective and vision of the trusted and beloved blue color family”, said Leatrice Eiseman, executive director of Pantone’s Color Institute. “Encompassing the qualities of the blues, yet at the same time possessing a violet-red undertone, Pantone 17-3938 Very Peri displays



a spritely, joyous attitude and dynamic presence that encourages courageous creativity and imaginative expression”.



DOMOTEX CANCELLED IN JANUARY 2022

“We have been fighting for Domotex together with the exhibiting companies until the very end, and have been in daily communication with the industry for months” says Sonia Wedell-Castellano, Global Director Domotex, Deutsche Messe AG. *“Domotex is particularly affected by the impact of the Corona pandemic, as the vast majority of Domotex exhibitors and attendees come from abroad. However, given the current pandemic situation, international business travel is not expected to recover in the short term”* adds Wedell-Castellano. Just over a month ago, the organizers wanted to stage Domotex in the southern part of the Hannover exhibition grounds in a compact format as a Re-Start event in three halls, thus giving the industry a chance to meet physically after almost two years of pandemic. Wedell-Castellano: *“What was considered a realistic and promising Re-Start scenario a month ago, and was also well received by the market, has proven to be no longer feasible in recent days”.* The organizers are looking into a Domotex date later in the 2022 calendar year.

“CENTRAL AFRICAN FORESTS FOREVER”: CHAMPIONING SUSTAINABILITY SOLUTIONS IN THE CONGO BASIN

The new edition of Central African Forests Forever by Meindert Brouwer is an in-depth look at the Congo Basin rainforest, including opportunities and solutions for its sustainable use. FSC plays an important role in the plan for this vast forest’s protection. The Congo Basin is the world’s second largest rainforest after the famous Amazon, and a large amount of it is uninterrupted. However, in recent years, human activity has increasingly become a threat to this incredibly diverse ecosystem. From excessive logging to encroachment, governments in the Congo region have realized it is time to form a plan to protect this important forest. In the latest edition of Central African Forests Forever, author Meindert Brouwer takes on these challenges and proposes various ways to deal with them. The book was presented at the global United Nation’s conference on protecting biodiversity in Kunming, China last month. FSC is featured as one of the means through which the government of Gabon is acting to protect the Congo Basin forest. This includes an interview with Lee White, Minister of Forests of Gabon, about the country’s



unprecedented transition to FSC-certified sustainable forest management in an effort to push back illegal and destructive logging. FSC can be a strong tool for governments to protect forests, and if successful, this example set by Gabon can change forestry in the Congo Basin and worldwide. Central African Forests Forever has been an important tool for advocating the protection and sustainable use of the Congo Basin’s forests. Green activists in China have used it to push for Chinese timber companies operating in the Congo Basin, which have a particularly bad reputation for clear-cutting and other harmful forestry practices, to embrace sustainability. In the long run, sustainable forest management is in the best interest of both companies and forests, a point the book makes very clear. The updated edition of Central African Forests Forever is currently available in English, Chinese, and French.



SIGNATURE
Noce Veste di Monaco | Tavola
woodco.it

OH MY

WOOD!

7 ideas sustainable
X Xmas

1

Beechwood toothbrush

The toothbrush handle is made from sustainable FSC Beechwood. Every tree cut down is re-planted and excess material is used to heat up the factory.

uk.georganics.com

Squadrette

This set square is a perfect reproduction of the capolavoro: the "masterpiece" artefact that the trainee cabinet maker was expected to execute at the end of his training, to prove his acquired skills. It is produced by the Bottega Ghianda workshop with dovetail joints; hand-made and assembled, then finally polished, also by hand.

botteghianda.com



2



3

Fresh and elegant fragrance

A shaving soap used with shaving brush. A gesture to recall an ancient ritual. Carthusia Uomo is a fresh and elegant fragrance that reminds of things like the open sea, fresh fruit, good Russian leather, and recently spun cashmere. The beautiful Italian Olive wood shaving bowl is made by master craftsmen.

carthusia.it



4

Unconventional

Inspired by cultural icons from the art and design world, the wall hooks are a simple marriage of natural wood grain with monochrome features. Design By Becky Kemp.

luciekaas.com



6

Collect, stack and take a seat!

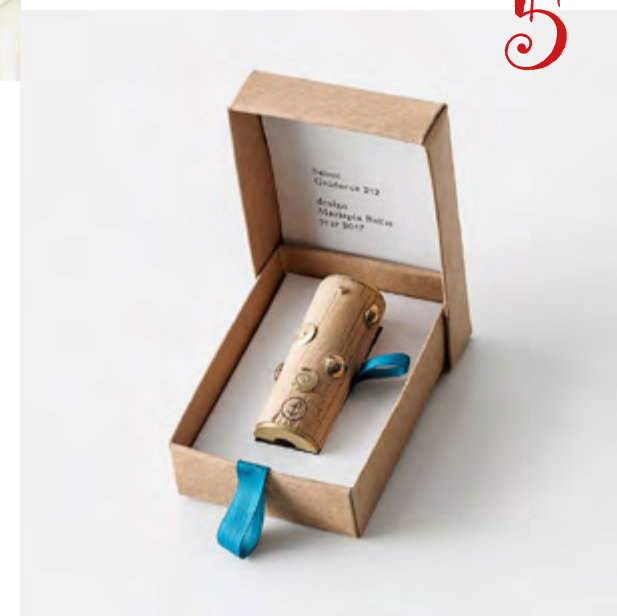
Daily, monthly, and even quarterly magazines flutter into houses and no longer wish to be stored in dusty bookshelves or thrown into green garbage bins. Instead, do it the nju way: collect, stack, and take a seat! The Hockenheimer makes this possible: a clever storage system for magazines and newspapers makes it a truly sustainable and unique piece of furniture.

njustudio.com

Pieces of Venice

Pieces of Venice it's a social enterprise that functions on circular economy principals with a short supply chain. Starting with the reclamation and recycling, discarded materials from Venice are given new life through industrial design projects that turn them into souvenirs or useful objects. There is also a link between older and younger generations, through a story which is told...

piecesofvenice.com



5

Domino Game

Here is a box containing the domino game, produced by Armani Casa. An elegant casket in leather and walnut that contains a fun pastime: the domino. All made in the refined style typical of the Armani Casa world.

armani.com



7



PICTURE HOUSE

PARAMOUNT
OFFICE
SPACE

Australia has more co-working space per capita than any other country in the world. It is apt therefore that it should also be home to one of the most sophisticated shared office spaces in the world

FRANCESCA FERRARI



Located within the iconic Paramount House in the heart of Sydney's Surry Hills, Woods Bagot and Elan Construct have created a co-working experience that seamlessly combines function, aesthetics and luxury. Paramount by The Office Space comprises 22 private office suites, a meeting and boardroom, kitchen area and a stunning purpose built brass bar. Mid-century design pieces from Walter Knoll and Molteni&C and custom furniture unite with the technological requirements of contemporary business. The outcome is a sense of luxury, comfort and sophisticated hospitality within a modern office setting. The heritage building set a geometry for the design of the interiors. However, it was a recognition and celebration of the original fabric of the distinctively curved Art Deco element of the Paramount building that led to a skilfully executed, elegant design outcome. Natural materials including limestone, leather and marble combine with burnished brass fixtures to contribute to the high-end glamour which emanates from the extensive use of American black cherry solids and veneers throughout the space.

"The building's signature form is echoed in the softly-curved handmade timber office suites that wrap around the contour of the floor plate. An intricate three-dimensional feature ceiling of timber and brass links the individual elements within the office, creating a compelling aspect both within and from the street," Woods Bagot Principal Domenic Alvaro says of the project.

LUXURIOUS AMERICAN BLACK CHERRY

The softly curved offices suites are formed from American black cherry. Todd Hammond, Woods Bagot Head of Interiors says the intention was to create a space "seemingly milled from timber to reconstruct a 'yesteryear' aesthetic in contemporary presentation". Hammond confesses a "love affair" with American cherry, a species that he says offers an alternative to the ubiquitous trend in Australia for blond timbers, yet without the formality of darker walnut. "I think cherry sits somewhere in between; not only in tone but also with its level of professionalism, which can be used in a casual way". Indeed, whilst walnut was considered for its sense of luxury, it was felt the darker hue would enclose the smaller offices and American cherry offered the golden, honey tone that complemented the Queensland maple timber that graces the entrance to the space.

Inspired by the use of American cherry by Japanese artisans and mid-century architects such as Frank Lloyd Wright, Hammond says that the timber *"has a life about it - it's a timber that evolves, goes through phases whereby it starts off fresh and almost youthful, then it starts to age the longer you have it. It also has a nice figurative grain and tones that transition from pale pinks and creams through to deep golden honey hues"*. The luxuriousness that results from the natural darkening with age of the timber led the Woods Bagot team to leave the timber without a UV coating.



CREATOR, CLIENT AND PERFECTIONIST

Paramount by The Office Space is owned by Director of Elan Construct, Boris Tosic. Well known amongst Sydney's architectural and design elite, the Woods Bagot team and Tosic had the advantage of an existing mutual respect and aligned vision for the project.

"Elan Construct is flexible and can adapt and interpret architectural sketches, which means they can build from very simple design intent drawings," says Hammond. The Woods Bagot team talk of the "exceptional creativity; engaging outcomes and functional solutions" that Tosic was able to bring to the project.

For Tosic, as both owner of the development and the contractor, this was a deeply personal project and one on which he looked to test his abilities and those of his team. "I am obsessive about detail and set no limits in making

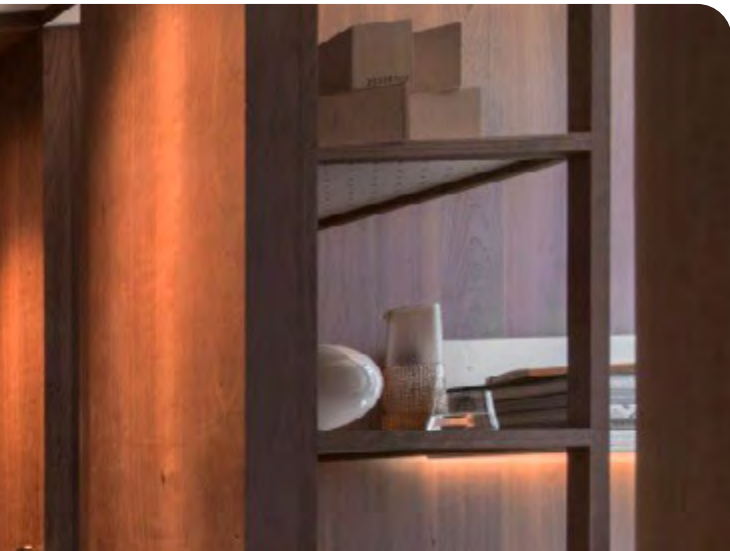
something as beautiful as I can," he says of his work. His pursuit of perfection is evident throughout The Office Space. Elan has a reputation for innovative approaches used in conjunction with artisanal joinery techniques. A combination of contemporary CNC technology and bespoke joinery and shipbuilding techniques, in addition to a hand finish, delivered the high end detail which would not have been possible had only one technique been employed. The doors to the office suites were created with a mortise and tenon technique, used for centuries to achieve a strong but seamless finish. The 45mm thick timber has been hand cut, sanded and oiled and glass inlays optimise the flow of natural light into the workspaces.

The build included 600 square metres of hand-glued American cherry veneers, mismatched and rotated. The quality of finish and attention to detail is pervasive. Even the

interior carcasses of the kitchen cupboards feature cherry and brass detailing.

Unlike most projects of this nature which progress from the ceiling down, Tosic decided to approach the build as a joinery exercise, which meant resolving the design and creating most of the structures in the Elan workshop itself. *"We levelled the floor and then staged out the site to the millimetre with timber stencils and different elevations to reveal where the suites would sit. The curved suites were then constructed entirely by hand in our workshop before being transported and set in place. It is essentially a giant 3D puzzle that clips onto itself".*

- **Architect:** Woods Bagot
- **Wood species:** American cherry
- **Photography:** Trevor Mein



Live your daily woods



Biocompatible wood floors.
To build healthy spaces you need solid and simple bases.
And a biocompatible floor by Fiemme Tremila to walk on.

Luci di Fiemme | Dolcerivo

MAISON MAGIC: CONTEMPORARY CLASSICISM

THE DESIGNER: THE ARCHITECT FABRIZIO MAUTONE

After obtaining a degree in Architecture and a Research Doctorate in the History and Study of Architecture at the Federico II University in Naples, Fabrizio

Mautone dedicated himself not just to designing, but also to teaching, taking part in numerous interdisciplinary studies and publishing a variety of texts and articles. Now he is a lecturer in Design for the hospitality industry and in the History of Architecture and Design at the Faculty of

Architecture in Naples. A freelance planner and designer, he is interested in the architecture and furnishing of hotels, villas and homes, wellness centres, shops, showrooms and museums. He also collaborates as a designer with some companies specialising in the furnishing sector.

The dreams of a young married couple come true in Naples in a light, airy shop where delicate wood panelling and refined Hungarian plug flooring characterise the classical matrix of the interior

TITO FRANCESCHINI

THE FLOOR

Wood, architecture, history, regality: this is the history of the Hungarian plug, which transforms every space into a valuable residence with its unsurmountable elegance. Woodco interprets it in a more contemporary version in its Dream parquet. The collection is the fruit of a profound knowledge of the essence of parquet, of advanced production techniques and of numerous checks on the

work. Solvent-free varnishes and oil-wax finishes guarantee that all the components of the Dream collection are completely non-toxic and safe and contain no harmful substances. The safety of each single piece of parquet is certified by accredited Italian laboratories with the aim of offering flooring which is truly in harmony with the nature which surrounds us and which can guarantee the highest standard of healthy living. **woodco.it**

PROJECT

- **Locality:** Naples, Italy
- **Customer:** Maison Magic
- **Surface area:** 148sq.m.
- **Designer:** Fabrizio Mautone, architect
- **Floor:** Dream Hungarian plug by Woodco in White Oak
- **Supply and laying:** Aria S.r.l. Naples
- **Agent:** Pietro Pizzo

Value the contents and not the container: this is the motto which inspired Maison Magic, the famous bridal shop in Naples. Designed by Fabrizio Mautone, the new look of the shop emphasises the long sartorial tradition which has distinguished Maison Magic since 1970. In room after room, majestic rows of white dresses are displayed neatly on shining rails designed to let the dresses fall

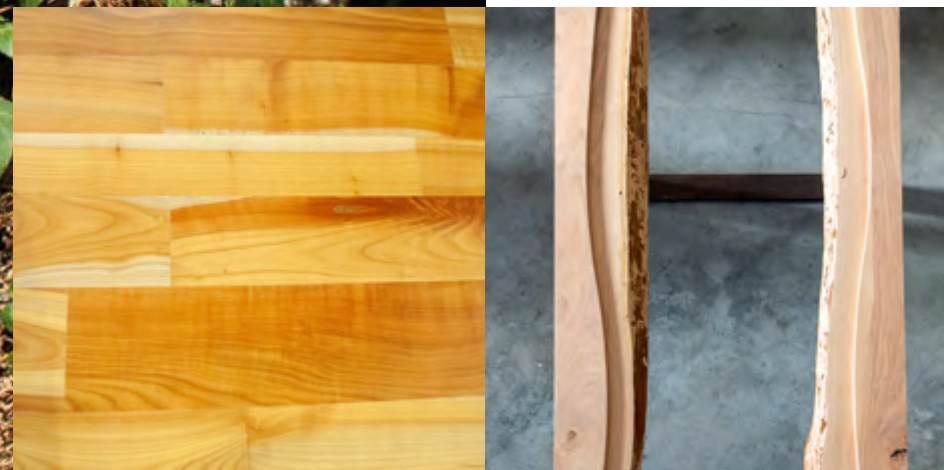
without interrupting the flow of the material. A multitude of strategically placed spotlights light up the dresses so that future brides can examine them in every detail. Large mirrors enlarge the spaces and reflect the stupendous classic wall décor. Using a light colour palette, the interiors seem to want to play with contrast while maintaining a delicate balance of composition. Elegant panelling is linear and vaguely

minimalist, richly embellished materials co-exist with the austere shine of metallic elements, large soft furnishing softens the geometric lighting play. The Woodco parquet flooring adds more continuity to the warm, welcoming but exclusive atmosphere. Dream in White Oak laid in Hungarian plug enhances the whole shop thanks to its natural luminosity, evoking timeless hints of nobility.

Getting to know timber: Cherry

Originally from Asia, this tree grows spontaneously and is naturally widespread in all European woods. Its timber is in soft shades with hard-wearing, delicate and varied veining

GIANNI CANTARUTTI



The cherry (*Prunus avium*) is a fruit tree belonging to the botanical family of Rosaceae. Along with *Prunus cerasus* it is one of the wild cherry species which are the origin of the different types of fruit cherries. Originally from Asia, it grows spontaneously and is naturally widespread in all European woods. That these trees already existed in primitive times is shown by the discovery of cherry stones found in archaeological excavations. The tree on average reaches a height of over 25 metres and an age of over a century.

CHERRY TIMBER

Cherry heartwood varies from brown to a near yellowish colour, sometimes with greenish flashes, while the sapwood is lighter. It has a fine texture with straight fibres, medium hardness and weight and seasons without difficulty with average shrinkage. It can be worked easily and moulded with steam, but it is a 'fragile' timber which buckles easily and is subject to rot and woodworm if not treated. To make the colours of the heartwood and sapwood more uniform and more red, the timber is treated with steam or immersed in lime water. Nowadays, the American cherry (*Prunus serotina*) is the one most used in industry and carpentry. This tree produces more timber on average than

XYLOTHEQUE



the common European cherry. The average specific weight of both species is around 500-600 kg. per cubic metre. The timber lends itself to carpentry work quite well. For many years in the last century it was recommended and used for flooring. In the last decade this use has declined because of the scarcity of good-sized trunks.

APART FROM FASHION...

Parquet made from this attractive species, which is maybe no longer 'à la mode', should still be taken into consideration where soft colours and varied veining are appreciated. These distinctive features testify to the value and worth of delicate and hard-wearing cherry wood.

A mobile xylotheque would be the ideal for talking about and promoting the particularities and special features of timber like cherry, which was once much sought after and appreciated, but unfortunately nowadays is forgotten. In the Lignamundi xylotheque in San Giovanni al Natisone, where over 1000 species of timber used nowadays in industry and craft all over the world are on show, you can see the effect offered by these timbers. There are boards and veneers, but in particular, delicate objects, tables and floors as can be seen in the pictures accompanying this article.



VELUREX CLEANER STAR

Velurex Cleaner Star is an intensive multiuse cleaner, recommended for maintenance of lacquered wooden floors. It also efficiently acts on PVC, linoleum, melamine, marble, etc. removing dirt, black heel mark, various stains; it doesn't leave halos and perfume the environment. VELUREX Cleaner Star is a neutral cleaner with addition of special nanoparticles which guarantee to the treated surfaces a deep cleaning and a long lasting action, even in the presence of pets.

chimiver.com



XILEMA LINE

In the forests it is easy to come across trunks of old trees: they are naturally dead plants that Garbelotto recovers and enhances. The Xilema line has several objectives in the name of eco-sustainability: keeping forests clean, giving wood a second life and facilitating natural reforestation. It is perfect for all those who like nature with characteristics that make it material and alive, suitable for everyday living spaces or in any other environment with boards up to 240 mm wide and up to 2500 mm long.

garbelotto.it



SUPERSOAP

Kerakoll offers a complete range of products for the ordinary and extraordinary maintenance of painted and pre-finished parquet surfaces and more.

SuperSoap: neutral detergent with lavender extract, to clean and care for all types of floor, ideal for use in GreenBuilding. Concentrated, eco friendly, water based soap with a low solvent content. Effective cleaning of all Cementoresina®, Cementoflex®, Legno+Color® and Microresina® continuous 3 layer floors without damaging their surfaces. Ideal for cleaning to varnished and oiled wood, prefinished hardwood, ceramic and porcelain tiles, marble and natural stone, plastic laminate, PVC, rubber and linoleum floors.

kerakoll.com

AFRICAN ZEBRANO

GIANT®, the solid hardwood giant plank, is available in 26 different wood species coming from all over the world, carefully selected and processed with craftsmanship, as a result of a wealth of knowledge that has its roots in the territory in which it is born. Among the most precious and desired species of our product range, there are exotic woods such as Palissander Santos Morado, African Afrormosia, African Mutenye Ovangkol, African Zebrano, Original Burma Teak and Incense Cabreuva.

In the photo: The varied color and the original texture of GIANT® African Zebrano brings into your home the atmosphere and the authentic feeling of the tropical forests from which it originates.

listonegiant.it

THE SHOWROOM



PULITO PARQUET

Pulito Parquet by Tover is the effective and sustainable solution for cleaning lacquered and oiled wooden floors. Formulated with raw materials of vegetable origin, with a neutral pH, this soap acts deeply against dirt and refreshes the surface. Furthermore, when used with the Cinderella spray mop, it allows you to obtain a perfect clean by minimizing the consumption of water and detergent. Winning features that make you love it over the first time you use it. For this Tover offers the possibility to purchase the product in private label, even for small quantities: a huge opportunity to build customer loyalty and increase the visibility and diffusion of your brand.

tover.com



DREAM!

In a dream everything is possible: living life surrounded by the most beautiful objects, feeling one with nature and giving ample space to the universe of affection and feelings that makes everyone's life unique. Dream is all this: a collection that is particularly rich in colours, finishes and formats to give shape to every idea of what a home can be and make sure that every room expresses something unique and personal.

The choice of species and colour is only the first step. Different formats and designs for different laying patterns further increase the possibilities for creating a unique and personal parquet.

woodco.it



LASER INLAYS COLLECTION

The laser technology and the wooden floor: a sophisticated combination. Being the first company in the world to study this employment, allowed Berti to realize out-and-out art works becoming a matchless point of reference. Collaborating with the most famous designers and architects, the technical department, thanks to laser technology, is able to create wooden floors with inlaid panels and edges as well as the most original declinations on the wall.

berti.net



ULTRACOAT RENEW FL

Ultracoat Renew FL primer for wood flooring is the best choice for refurbishment work; no sanding required and no need to remove the old finish, it also avoids creating dust and shortens the time required to complete work. It is used when applying two-component varnish on existing parquet treated with UV-resistant or oil-based finish (except oily wax finishes), or with solvent-based or water-based varnish. Along with Ultracoat Remover Plus, Ultracoat Cleaner and Ultracoat HT 2K, it gives a new lease of life to the surface of wood flooring and preserves the natural beauty of parquet floors.

mapei.com



CARECLEANER

Water-based wipe care product, cleaning and protecting in one step: the easiest alternative for the regular care and refreshing of finished surfaces.

Strength points:

- Can be used universally on various finished floors
- Extremely economical concentrate
- Can also be machine applied
- Clearly visible care effect
- No basic cleaning required.

Suitable for cleaning and caring for finished parquet, hardwood floors, PVC, CV, polyolefin, cork, linoleum and rubber coverings as well as natural and synthetic stone. Maintains the dynamic coefficient of friction for sports flooring as required by DIN 18032. Certified FIBA product.

loba.de



BOSCHI DI FIEMME REALE

The oak as nature created it. Royal and regal is its dove-grey colour, lulled by shades brightened by the diaphanous and almost imperceptible veil of the transparent oiling.

Collection: Boschi di Fiemme

Essence: Reale, oak, knot-free, brushed

Treatment: BioPlus® oil

fiemmetremila.it



PALLADIO MODEL

Palladio Model of the Geometrici Collection is the perfect parquet for luxury and originality lovers. Its cubic geometry, single-diamond vein, and refined color nuances create a 3D play with a classic, elegant taste. The wood is supported by a 4 mm top layer to ensure stability and limit deformations due to changes in environmental conditions.

Essence: Oak, Walnut

Structure: 2 layers

Installation system: M/F

Microbevel 4L

Dimensions: 15/4 x 230,9 x 200 mm

almafloor.it

PIANA SHOWS



DETEROL & DERGOS

Deterol is a concentrated soap rich in vegetable oils for the ordinary maintenance of oiled or waxed wood floors. It nourishes and cleans the wood, suitable for professional and domestic use.

- To be diluted
 - It maintains the original look of the finish
 - Deeply cleanses and nourishes wood
- Soap and emulsified wax mixtures, Dergos can be used as an alternative to Deterol to obtain greater protection and shine. Available in clear or white versions.

- To be diluted
- Regenerates the original finish
- Cleanses and nourishes wood

carver.it

TRADITION AND INNOVATION

In Piana Srl, Tradition and innovation have been transformed into quality products since 1982. Intuition, ingenuity, humility, passion and determination, are the small gestures that the founder Mauro Piana before and today his son Andrea together with his wife Alessia, have put at the service of the company day after day, making it grow to become an Italian excellence. Piana Srl is able to effectively meet the complex needs of an increasingly complex and sophisticated architecture market by offering a complete range of parquet, laminates, ESPC, skirting boards and floor completion accessories. In photo an elegant oak parquet with a brushed finish laid in a herringbone pattern, Venezia model.

pianaprofili.it



ETERNO IVICA

"We design and create our products to give support to those who design, install, and own a building. This concept has led to supports for raised paving, products for water drainage and accessories for waterproof coverings. Value-added solutions for buildings". Eterno Ivica is a company that for over 60 years has been working in the field of private, industrial building and architecture, the company is distinguished by the high degree of quality and innovation.

Eterno Ivica produces:

- Adjustable supports for exterior elevated floors
- Outdoor substructures for all kind of decking
- Roofing accessories for roofs and balconies waterproofing
- Accessories for liquid waterproofing
- Drain boxes, channels and other products for water drainage
- Products for sound insulation
- Design solutions for sound-absorption
- Silenced aeration and ventilation

eternoivica.com



BALANCE PRO, THE REVOLUTION IN THE INSTALLATION OF OUTDOOR RAISED FLOORS

Balance Pro allows you to cover heights from 25 to 1025 mm with a single range of products. The tilting head allows to correct up to a 5% of slope. The supports guarantee a load capacity up to 1.000 kg. Speed of installation, safety, sturdiness and the possibility of configuring the support according to every need, make Balance Pro a truly revolutionary system for laying raised floors.

impertek.com

European parquet manufacturers navigate between high demand and tight supplies



Consumption of parquet has increased on all European markets, but low availability and high costs of raw materials are hampering the sector's enthusiasm and creating some frustrations...

BY EUROPEAN FEDERATION OF THE PARQUET INDUSTRY

Consumption of parquet has increased on all European markets during the 1st semester 2021 when compared to the same period in 2020 and whatever the strictness of the covid-19 related measures taken at that time in the different countries. Renovation, and adaptation of homes to "post-covid-19" life, is still the driver of the parquet consumption

growth. The market is expected to progress further until the end of the year but at a slower pace as consumers are restarting to spend in activities and areas which were limited during the sanitary crisis. On the other hand, low availability and high costs of raw materials are hampering the sector's enthusiasm and creating some frustrations. The duration of this



unprecedented situation is also a worrying question mark. The phenomenon concerns not only wood but also glues, coatings, packaging, transport... And all industries are concerned.

CURRENT SITUATION

Regarding wood, on the one hand, the pandemic and its consequences on everyday life are supporting a strong demand for wood (renovation, DIY, packaging...). This rising trend is expected to continue (although office spaces will be reduced) as the use of wood in construction and in a number of other applications is increasing. On the other hand, there is a shortage of raw material. Wood (also damaged by bark

beetle) is massively exported to China (according to China Customs, log imports in the first half of 2021 amounted to 31.26 million m3 valued at US\$ 5.265 billion (CIF), up 29% in volume and 48% in value). Bans of exports from Russia and a couple of other East-European countries are worsening the situation of wood availability directly and indirectly by forcing China to buy in Europe. Additionally, due to ongoing supply constraints with Canada, US, which also experiences a strong wood demand, is turning to Europe for its supply. The main question here is for how long it will be like this, and if this is going to be the new prices level or if it will keep going up! Difficult question and

experts disagree on it. Some forecast that equilibrium will be reached in a few months but that prices level could remain high.

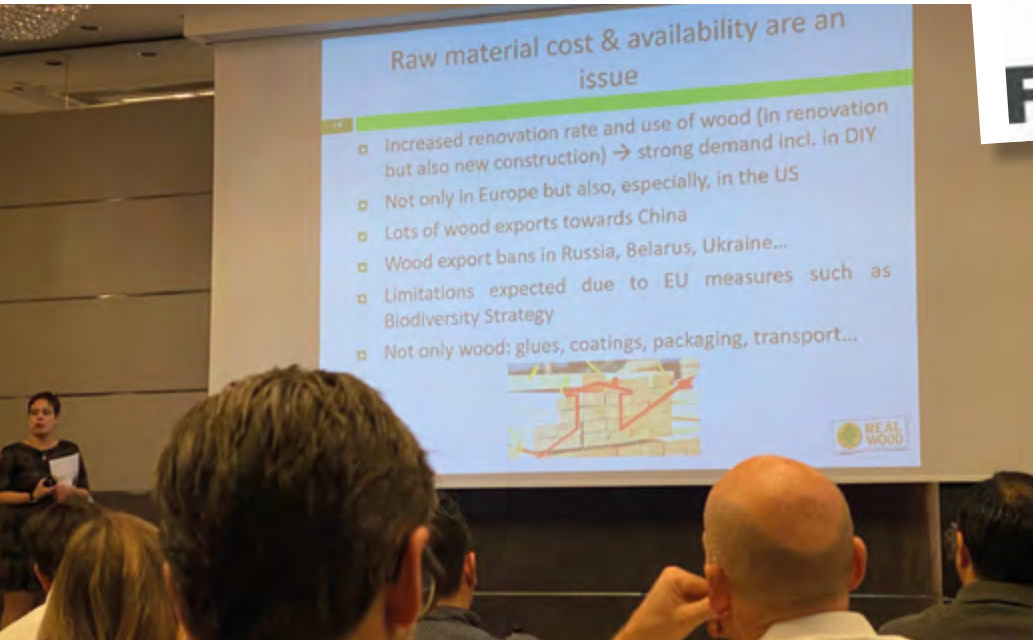
AND IN THE NEAR FUTURE

Indeed we expect that wood demand will remain high from both the EU and the US for the reasons above-mentioned (renovation, DIY, packaging). The EU support to the use of wood in construction and the development of new wood applications will also boost wood demand in the longer-term. On the other hand, the same EU authorities will limit wood harvesting through their new Biodiversity Strategy and we observe more and more protectionist barriers to

trade of wood from Eastern Europe - non-EU countries - and even within the EU. All in all, this could lead to even higher costs on the global market. A phenomenon (to be) observed for other (construction) materials and elements as well. This is not a bright picture for the future but FEP is present at EU level and urges the European Commission's DG Trade and DG GROW to support actions against protectionist measures taken outside and within the EU.

THE SPECIFIC CASE OF POTENTIAL NEW RUSSIAN BAN OF LOGS EXPORTS

More specifically, FEP, with other European associations of the woodworking



industries, is discussing the material scarcity which may be, directly and indirectly, created by the new Russian export ban of logs to come into force in January 2022. As already stated, demand for wood in Europe is high and likely to remain so. While Europe imports a relatively small amount of Russian logs (approximately 170,000 tonnes of softwood logs and almost 3.4 million tonnes of birch logs), other neighbouring countries, namely Belarus, Ukraine and Turkey, also have log or wood product export bans (or measures having the same effect) so the cumulative direct impact will be an increase in competition for logs on the EU market resulting in an additional upward pressure on sawlog and timber prices. It must be also noted that a few European forest companies have leased forest areas in Russia, from which timber exports to the

EU would also cease as a result of the export ban. The indirect impact is that the Russian ban will cut off supplies to China, the number one export destination for Russian logs. China will then be forced to seek alternative sources of this key raw material. So China may well come to Europe to buy logs, further exacerbating the existing competition for logs and resulting in prices being driven ever higher. There are already signs of this as European shipments of logs to China are sharply increasing since a few months. As a consequence, all over Europe, wood processing companies are fearful they may be outbid on log prices, and the jobs of thousands of Europeans, many in rural areas, threatened. At the same time, it is not an exaggeration to state that the uncontrolled export of logs from Europe

will ultimately result in Europe being short of the sustainable wood it needs for use in the built environment to meet its 2050 Net Zero climate goal. The lockdown necessitated by the covid-19 pandemic led many households across Europe to invest in DIY projects and renovation involving wood products. At the same time, the use of wood in new buildings continues to increase. These are all welcome developments as the use of wood in construction and renovation results in more carbon being stored in the built environment and the substitution of energy intensive materials, such as steel and cement, whose manufacture is dependent on the burning of fossil fuels. The lifting, ideally before its implementation, of this new potential Russian log export ban is hence of critical importance to our industry.

Wood. Dance to a different tune.



In defence of the original.

Wood used in building comes from forests with controlled timber felling. It is a completely renewable material which requires very low levels of energy in the production processes. A wood floor helps to maintain an ideal micro-climate inside the house, softens the falls of those just learning to walk and can be restored an infinite number of times.

Choose a wood floor.
Sounds like music to your ears?

EMISSIONS OF VOLATILE ORGANIC COMPOUNDS FROM WOOD AND ITS DERIVATIVES

When we consider the “sensitive” characteristics of wood, in addition to its visual, noble and familiar aspect, as well as the pleasant tactile sensation it produces when we touch it, we should also properly consider its smell...

FRANCO BULIAN

The wood scent, which varies a great deal according to the species considered, normally produces pleasant sensations that suggest the unspoiled nature, the trees and the beauty of green landscapes. It can also awaken in us memories linked to the work of the old carpentries, the rooms of ancient buildings, a perfume that is therefore also a profound reference to the culture and history of humanity. In purely scientific terms, these aromas are evidently the result of the emission of volatile organic compounds that pass from the wood into the air and then reach our nose and consequently the olfactory cells that allow us to perceive their presence.

Knowledge of the volatile substances that are emitted from wood is today a very relevant issue which, beyond the sensory and cultural aspects mentioned above, mainly concerns the quality of the air we breathe. As we all know, standards, laws, regulations of various types now focus attention on the effects of potential emissions of volatile substances from the materials that surround us, consequently imposing limitations in qualitative and quantitative terms. Therefore, knowing which substances are emitted from a piece of wood can be useful from different points of view, first of all, that of knowing and duly considering precisely these natural emissions when proposing or defining limitations in this sense within the various national and international standardised and legislative tables. Being prepared always helps not to make mistakes.

1. THE ORIGIN OF THE EMISSIONS

Wood emits various types of volatile organic substances and in very variable quantities depending on the wood species considered but with a significant differentiation, as we will see later, between Softwoods and Hardwoods.

However, a first important consideration concerns the subdivision

between those that can be classified as primary emissions, i.e. dependent on substances that wood directly produces for its biological activities, and those that can be considered as secondary emissions. The latter derive from complex degradation phenomena (for example from oxidation or from hydrolytic processes) that occur on certain wood components. Due to the interaction with oxygen, temperature, electromagnetic radiation and other degradative factors, certain volatile substances can therefore form directly from lignin, cellulosic components and other complex substances that make up wood.

This observation already leads us to a first important consideration concerning the duration of both types of emissions previously mentioned. The primary volatile substances are in fact no longer produced by wood after the tree has been cut and therefore, although their release may initially be even high, it will nevertheless progressively decrease, tending to practically zero over the course of a few months or a few years. On the other hand, the initial emissions of secondary volatile organic substances are usually lower but can nevertheless continue for a much longer period of time since, as already mentioned, they can tend to be continuously generated inside wood due to the degradation phenomena already reported. Still considering the differentiation between primary and secondary substances, it is clear that the processes or treatments to which wood is subjected (for example its heating in the pressing of panels or in the production of thermo treated wood), can accelerate the rapid release of volatile substances (the primary ones) and, on the other hand, promote the formation of secondary substances.

The following paragraphs examine in detail which substances belong to the primary emissions and which ones

Catas: WHO WE ARE

Since the foundation of Catas, more than 50 years ago, we have the safety and the quality of raw materials and finished products to our heart: every day in the operating centres of San Giovanni al Natisone (Udine) and Lissone (Monza) we carry out chemical analysis, physical and mechanical tests on raw materials, components and finished products of the wood, furniture and building industry. Thanks to our expertise and specialization we are considered the biggest European laboratory for testing and for applied research in the wood and furniture sector.

Main activity areas:

Laboratory tests, Product certification, Training.

CATAS numbers

- 10.000 m2 laboratory surface
- More than 1.300 Catas Members
- 2 operating centres: San Giovanni al Natisone (UD) and Lissone (MB)
- More than 50.000 test/year
- More than 50 experts: wood technicians, chemists, biologists, engineers, mathematicians and physicians

catas.com





are of the secondary type, also trying to derive some important practical information.

2. PRIMARY AND SECONDARY EMISSIONS

2.1 Primary emissions

The primary emissions, those that originate as a result of the presence of substances produced directly by trees to carry out their metabolic functions (in particular the terpenes) are by far the most relevant although they almost exclusively concern wood derived from softwoods they contain, in particular, different terpenes and different terpene derivatives.

2.1.1 Terpenes and terpenoids

Terpenes, which are chemically classified as unsaturated hydrocarbons derived from isoprene, perform various functions in living plants including that of acting as repellents against possible biological aggressions. Terpenoids, on the other hand, are terpenes modified by the presence of particular chemical groups (hydroxyl, carboxylic) or other chemical elements

(for example nitrogen). Among the most relevant terpenes related to wood emissions it is possible to mention the following compounds: pinene (alpha and beta), carene, limonene, camphene, phellandrene and terpinolene. The various wood species, basically softwoods, contain variable quantities of these substances but, with the same wood species, the concentration of terpenes is usually higher in the heartwood (the oldest inner part of the trunk) than in sapwood. Furthermore, given that, as is known, terpenes are normally concentrated in the resin canals, the emissions of these substances can be highly variable, depending on the specific piece of wood sampled for the analysis.

2.2 Secondary emissions

As already mentioned, secondary emissions derive from the degradation of the complex macromolecular constituent of wood, which produce, as a result of various types of reactions (oxidation, hydrolysis), simpler compounds with a low molecular weight, which therefore evaporate easily in the air. From a chemical point of view, these are normally carboxylic acids, aldehydes, alcohols and some other type of organic substance. The emission of secondary substances is generally greater in the case of wood elements derived from Heartwoods than those from Softwoods as a result of some chemical differences that characterize their components. The emission of acetic acid, for example, is generally more relevant in Hardwoods than in Softwoods due to the greater amount of acetyl groups (-COCH₃) present in the hemicellulose of these species. Furthermore, contrary to what has been observed for the emission of terpenes from Softwoods, in this case the secondary emissions are greater for sapwood than for heartwood.

2.2.1 Acids

The carboxylic acids emitted from wood are mainly represented by acetic acid, while others such as hexanoic and formic, can be emitted in much lower concentrations. Hardwoods, such as Oak and Cherry (frequently used in the furniture sector), emit considerably higher quantities of acetic acid (which can be easily detected by their smell) than woods derived from Softwoods. This evidence comes from the formation of acetic acid resulting from the hydrolysis of acetyl groups (deacetylation) of lignin and hemicellulose.

2.2.2 Aldehydes

Aliphatic aldehydes are mainly produced by the oxidation of acids deriving from the hydrolysis of fatty substances contained in wood and are formed especially if wood is subjected to treatments at high temperatures. A peculiarity of aldehydes is that they are normally characterized by intense odors which can therefore strongly characterize some wood-based panels or wood itself if subjected to heat treatments. Hexanal represents the aldehyde potentially emitted in greater quantity from wood followed by acetaldehyde, propanal, butanal, pentanal, heptanal and also formaldehyde. Even the emission of furfural can sometimes be detected although this cyclic compound is normally formed as a result of degradation phenomena that occur to cellulose and hemicellulose molecules at fairly high temperatures. As regards the formation of formaldehyde, specific studies show that it mainly derives from the decomposition of lignin, although it can theoretically also form from the polysaccharide components of wood (hemicellulose and cellulose) and from some extractives possibly present in certain wood species. Also for formaldehyde, the high

temperature treatment of wood and the high moisture content promote its formation.

2.2.3 Other VOCs emitted from wood: alcohols, ketones, hydrocarbons, ethers and esters

Methanol appears to represent a relative significant emission for various wood species, and mainly for Hardwoods such as Ash, Beech, Maple, Oak and Cherry. Emissions of ethanol have been also observed for Beech and to a lesser extent for Oak and Birch. Emissions of ketones, such as acetone, were detected by analyzing samples of Birch, Pine, Spruce, Beech and Oak. Some alkylfurans have also been found, albeit in low concentrations, in the emissions of some Hardwoods. As already reported emissions of other substances such as aliphatic and aromatic hydrocarbons, phenols and esters were also observed in consequence to wood treatments at high temperature.

3. CONCLUSIONS

This short article, based on literature data and on direct experiences from Catas, testifies first of all how the

issue of volatile organic compound emissions from wood and its derivatives is quite complex. In any case, some of the considerations reported above can make us understand certain dynamics and certain situations detected or detectable in the wood materials used in the wood-furniture sector. For further information on these aspects, please refer to the literature reported in the bibliography. As already mentioned in the introduction, we believe that knowledge of these issues is essential to manage in a rational way also the delicate issue of the limits to be imposed on the emissions of volatile organic substances from the materials that surround us. It is in fact necessary to make reference to toxicological data to establish exposure and emission thresholds. Proceeding on the basis of the emotion that safety issues always arouse, or on the basis of a mere questionable opportunism, can trigger negative consequences on the entire wood and furniture sector with the further risk of depriving us of even those pleasant and beneficial sensations that offers us wood with its delicate and fascinating scent.

BIBLIOGRAPHY

- Bulian F., Fragassa C., (2016), VOC Emissions From Wood Products and Furniture: a Survey About Legislation, Standards and Measures Referred to Different Materials, FME Transactions 44, 358-364 (2016)
- ThakeowP.,HolighausG.,SchultzS.(2007). Volatileorganiccompoundsforwoodassessment.inKulesUeditor. Wood production, wood technology and biotechnological impacts. Universitätsverlag Gottingen. Gottingen pp. 197-228
- PohlevenJ.,BurnardM.D.,KutnarA. VolatileOrganicCompoundsEmittedFromUntreatedAndThermallyModified Wood, A Review, in Wood and Fiber Science, 51(3), 2019, pp. 231-254 <https://doi.org/10.22382/wfs-2019-023>
- Kirkeskov L., Witterseh T., Funch L. W., Kristiansen E., Mølhave L., Hansen M. K., Knudsen B. B. in Archives of Environmental Health An International Journal · September 2001

The interaction with green spaces offers many therapeutic benefits. Let's find out which ones

FABIO BRAGA

WHY IS GREEN GOOD FOR HEALTH?



A 2015 study compares the brain activity of a sample of people after walking for 90 minutes in a natural or urban environment. According to the study, those who took a walk in the green had less activity in the prefrontal cortex, a region of the brain that triggers the rumination phase (in which people tend to repeat thoughts and focus on negative emotions). In addition to this, it seems that the interaction with green spaces offers other therapeutic benefits. For example, by appreciating the sounds of nature or the silence outdoors, blood pressure and levels of cortisol, the stress hormone, can be lowered. Once the ways to appreciate ecotherapy have been defined, it is important to understand how to self-administer the therapy of nature to better enjoy everyday life.

WAYS AND TIMES OF ECO-THERAPY

It takes 20 to 30 minutes, three days a week, plus a few weekends each month in the woods to find yourself in nature. The point is to make interactions with nature an integral part of the lifestyle.

The time spent in nature has in its totality a large amount of beneficial effects, regardless of the activity: a daily walk in a park or a Saturday afternoon on a local path, as well as trial running are examples of different degrees of how this activity could be carried out. It is also possible to combine nature excursions with regular exercise, walking or cycling outdoors.

WHERE TO GO?

The choice of the environment in which you immerse yourself in nature is important. Whether it's a park or a forest outside the city, the important thing is to focus on the places considered most pleasant and suitable for the activity, with the declared aim of getting away from hyper-stimulating urban environments and always surrounding yourself with greenery and nature: meadows, trees, lakes. they prepare the best to detach and clear the mind of waste.

ALONE OR IN A GROUP?

The nice thing is that it is not necessary to go on your own excursions, on the contrary,

experiencing eco therapy in company does not affect the final result of the activity. A 2014 study found that group walks in nature are as effective as solo hikes in terms of reducing depression, stress and improving overall mental outlook. Nature can have a powerful effect on our mental state and there are many ways to tap into it. The best (and only) way to experience the effectiveness of eco-therapy is simply to spend more time outdoors, trying to interact with other living beings.

THE DISCIPLINES OF ECO THERAPY: A SELECTION

There are several theoretical disciplines related to and often complementary to ecotherapy, here is a selection:

1. Biophilia: it is a discipline according to which it is not possible to live a complete and fulfilling life far from nature. Dutch studies have in fact shown that it is enough to observe a landscape in photography to observe the future from a positive perspective, opening the horizons to more rosy existential perspectives. According

to the study, people's exposure to natural landscapes extends their temporal and mental horizons, while exposure to urban landscapes narrows perspectives.

2. Silvotherapy: consists of direct contact with the trunks of tall trees. The technique is very simple: the back is placed against the trunk, the palm of the right hand is placed on the solar plexus which corresponds to the pit of the stomach and the back of the left in contact with the kidneys. In this position, you take slow, deep breaths for about twenty minutes. If then, silvotherapy is integrated with physical exercises or even better yoga, we speak of active silvotherapy. Among the benefits, there seems to be a marked improvement in nervousness and insomnia. The explanation is to be found in the production of negative ions of trees: the negative ionization of the air creates a general feeling of body relaxation, leads to detoxification and improved breathing, as well as an increase in the assimilation of vitamins B and C, and to a higher level of concentration.

3. Vegetable Gardens Therapy: it is now a support to conventional care in many hospital centers, it is in fact established that taking care of a vegetable garden is a natural anti-stress. If you do not have a vegetable garden available, it is sufficient to cultivate aromatic plants (perhaps even in the office) and you will enjoy benefits regarding productivity at work and concentration.

4. Garden Therapy: is a form of holistic therapy, useful for promoting inner health and well-being. It is mainly associated with garden care, with particular reference to plants and flowers, and in some cases with aromatherapy. Thanks to garden therapy, in fact, our sense of smell is positively stimulated by the scents emanating from the corollas and aromatic herbs. Taking care of the garden promotes serenity, instills hope and a desire to commit.

THE POSITIVE EFFECTS OF NATURE ON OUR WELL-BEING

In conclusion, I would like to mention some of the demonstrated effects of ecotherapy on psychophysical well-being:

- Increased energy: walking in the countryside or admiring the sunset makes you more positive and vital. Those who organize weekend trips in the open air are more regenerated in facing the beginning of the week than those who have spent hours on the sofa or in front of the television;
- Stress reduction: in contact with nature, cortisol, the notorious stress hormone, reduces its devastating effects on the body. Our immune system emerges strengthened and strengthened.
- Memory improvement: the symptoms of dementia are reduced in contact with green spaces. In clinics they are used precisely to derive this type of benefit. Being outdoors increases memory by 20%. The quiet and the vital energy that you breathe allows you to make memories resurface more easily and enhances the functioning of the cognitive faculties.
- Creativity development: children who were used to spending free time outdoors as a child develop a very strong bond with the earth and its beauty. They are curious children with a vivid imagination.