

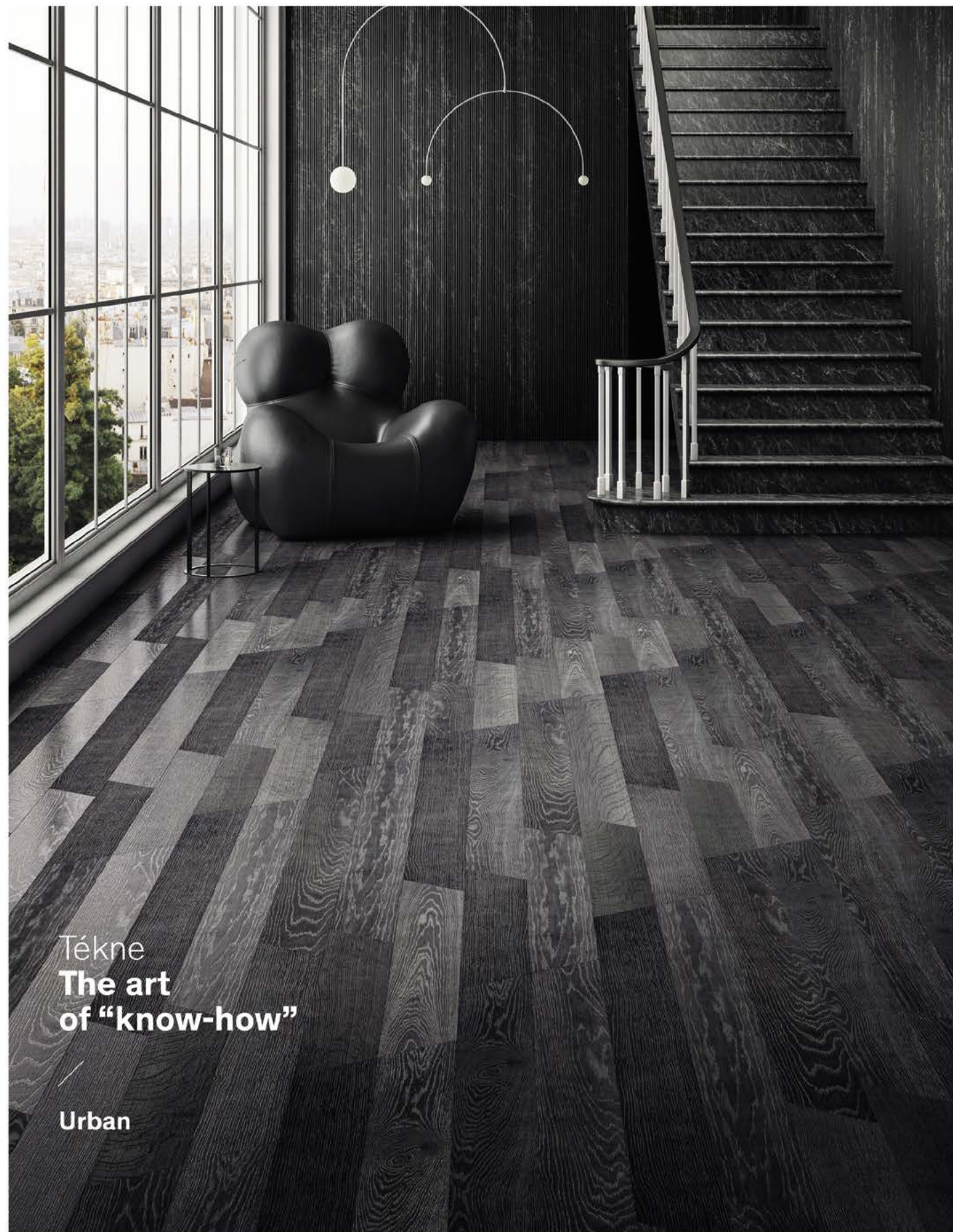
# WOOD

by **I LOVE PARQUET** September 2021

THE WOOD  
FLOORING  
YOU NEVER  
EXPECTED







Logic and irrationality mix to decorate residential or business environments,  
where life flows continuously blending action, thought and feeling.



Everybody would like a splendid wooden floor, but each room needs the correct, sustainable products to guarantee they last a long time. **Ultracoat Renew FL primer for wood flooring** is the best choice for restoring your wood without sanding and without removing the old finish.



EVERYTHING'S OK  
WITH MAPEI

Learn more on [mapei.com](http://mapei.com)











# CONTEMPORARY MASTERPIECE



MINI SUPPORT  
**MAXIMUM  
ADJUSTMENT**

10 MM HIGH ADJUSTABLE  
SUPPORT WITH 15 MM  
REGULATION

THANKS TO THE ADJUSTMENT SYSTEM AND  
THE TWO EXTENSIONS, PRIME UP CAN REACH  
25 MM HEIGHT



SCAN OR GO TO  
**IMPERTEK.COM**

MEET US AT CERSAIE (27/09 – 01/10) BOLOGNA ITALY

**GARBELOTTO**  
PAVIMENTI IN LEGNO



- ✓ Eco sustainable installation for green building
- ✓ Dry installation without glue
- ✓ Replacing single boards in a few seconds

European Walnut Habitat finish

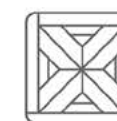


www.clipup.it

Since 1950 we have been producing 100% Made in Italy wooden floors of great quality and beauty. Clip Up System® allows you to replace a single board in a few seconds. Perfect for any public environment such as offices, shops, restaurants, gyms, hotels, private homes, for raised and inspectable floors. With high acoustic comfort, available in different sizes, wood species, surface finishes and customizable.

**CLIP UP®**  
SYSTEM

PATENTED LAYING SYSTEM  
Available for herringbone and quadrotte laying



Look for FSC®  
certified products



T +39 0438 580348 - info@garbelotto.it - www.garbelotto.it



# Wood you like ?

The **PICASSO** collection represents the beauty of an oak board in all its authenticity, as mother nature gave us. Its colour range enhances its warmth and modernity.

The naturalness of the unique choice is combined with the plus of Original Parquet's **SEVEN+** technology, creating a **100% Made in Italy** collection with excellent technical performance.



[www.originalparquet.com](http://www.originalparquet.com)

**ORIGINAL PARQUET**<sup>®</sup>  
IL LEGNO DI QUALITÀ DAL MONDO

HQ - FACTORY via Dell'Artigianato 18  
SHOWROOM via Del Lavoro 4  
48011 Alfonsine (RA) - Italy  
ph. +39.0544.80696





**Giorio srl**  
 info@almafloor.it - Tel +39 0173 976520  
 www.almafloor.it  
 f t i p almabygiorio

**Alma**  
 Giorio® pavimenti in legno



COVER BY  
 Berti  
 berti.net

**Editor**  
 4PUNTOZERO Srl  
 Via Console Marcello, 8 - Milano  
 Tel. +39 02 39265461  
 Fax +39 02 45497579  
 info@4puntozero.it

**Editor in chief**  
 Federica Fiorellini  
 fiorellini@4puntozero.it

**Editor**  
 Davide Vernich  
 vernich@4puntozero.it

**Editorial staff**  
 Anna Baroni, Fabio Braga, Gianni Cantarutti, Francesca Ferrari, Tito Franceschini, Eleonora Mazzola, Chiara Merlini

**Art Direction**  
 Cremonesi & Co Srl  
 info@robertocremonesi.it

**Layout**  
 Giuliana Garlaschelli  
 garlaschelli@robertocremonesi.it

**Advertisement Director**  
 Luciano Dorini  
 dorini@4puntozero.it

**Accounting and Administration**  
 Lara Papetti  
 lara@4puntozero.it

**Secretary**  
 Jacqueline Davis  
 info@4puntozero.it



4puntozero srl, the authorised processor of data of those receiving this publication, points out that the purposes of such processing make it possible for this magazine and/or others it publishes to be sent which is to facilitate the update of technical information. Copyright for all material published in I Love Parquet International remains with 4puntozero srl

Supplement to I LOVE PARQUET Magazine  
 N. 46, July 2021

## I LOVE PARQUET

### Contents

- 13 Editorial - Federica Fiorellini
- 16 ILP News - Agenda - Davide Vernich
- 24 Inspiration: This is why we love parquet
- 26 Oh my wood! - Pantone Edition
- 28 Xyloteca - Gianni Cantarutti  
Getting to now timber: Walnut
- 32 Interiors - Tito Franceschini  
Let there be light
- 36 Oh my wood! - Red Passion
- 42 Interiors - Francesca Ferrari  
California dreamin'
- 46 Wood Inspiration // Skema
- 48 Projects - Tito Franceschini  
Mediterranean atmosphere
- 52 Xyloteca - Gianni Cantarutti  
Getting to now timber: Olive
- 54 Wood Inspiration // Original Parquet
- 56 Interiors - Tito Franceschini  
Fluid architecture
- 62 Oh my wood! - Home work edition
- 64 Wood Inspiration // Eterno Ivica
- 66 Showcase: The fascination of Herringbone
- 74 Wood Inspiration // Kerakoll
- 76 Xyloteca - Gianni Cantarutti  
Getting to now timber: Chestnut
- 78 Wood Inspiration // Impertek
- 80 Oh my wood! - Small, beautiful things
- 82 Wood Inspiration // Piana Profili
- 84 Projects - Francesca Ferrari  
A new living concept
- 88 Wood Inspiration // Italprofili
- 90 In depth: The anatomy and characteristics of wood
- 94 In depth - Fabio Braga  
Tell it to the moon!
- 96 Wood Inspiration // Friulparchet
- 98 FEP Pages - New European Industrial Strategy:  
"Building a stronger Single Market for Europe's recovery"
- 102 Wood Inspiration // Alma Floor
- 104 Wood Inspiration // Progress profiles



SKEMA **Idea** design evolutivo



## Yles il legno che disegna

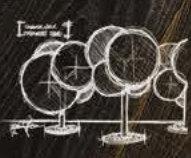
Legno che permette di disegnare lo spazio e ridisegnare il concetto di superficie, per dare nuovo significato alla materia e al parquet con disegno combinato. Sette finiture che danno vita ad infiniti pattern, che si ripetono per creare nuovi disegni, riscrivendo le forme tradizionali del quadrato, del rettangolo e della tavola.

design Arch. Franco Driusso  
an idea by skema.eu

YLES\_TARSIA.CARBO / TA\_02



Skini



Trametes



Talea



Gyros & Mimesis

... le altre idee

skemaidea.com

# SUSTAINABLE YES, BUT HOW MUCH? NOW WE KNOW



I Love Parquet has had a close relationship with Fep (the European Federation for parquet manufacturers) for about a year. Every edition of the Fep journal talks about the efforts being made to promote the wood floor sector. I am very proud of this collaboration because I have followed and appreciated the federation's work for some time. Through the years it has been able to gain the respect and just

recognition of Brussels through its responsible, expert competence and it has worked for the common interest but, above all, has investigated the best strategies to use to increase the market share of our wonderful product. Fep was one of the supporters of recent research commissioned by Cepi (The European Confederation of Paper Industries) to calculate the effect of timber and timber products as 'carbon absorbers'.

I'll only mention one finding: the total positive effect of timber and wood-based products on the climate is estimate at -806 tons of equivalent CO2 per year (equivalent CO2 is a unit of measurement which can weigh different greenhouse gas emissions with different climate-changing effects together) which corresponds to about 20% of all the fossil emissions in the European Union.

To put it simply, products from forests have a very low carbon footprint, as well as reducing the demand for energy based on combustible fuels. In short, all (or nearly all) of us know that timber is sustainable. It is completely recyclable, as its production, processing and disposal uses far less energy than any other type of building material and, most importantly, thanks to the combined effects of "carbon sink" (carbon absorption) and "carbon stock" (ability to treat carbon) it helps to reduce carbon emissions. However, we never knew how sustainable it was.

This research seems to me to be a formidable marketing tool. To be read and repeated to clients, partners and stakeholders as a mantra. Offering a product which has 'an effective positive effect on the climate' is of no little importance. Spread the word.



SAREMO PRESENTI A:  
**SUPERFACES**  
RIMINI 13-15-10-2021



Live your daily woods



**Biocompatible wood floors.**  
To build healthy spaces you need solid and simple bases.  
And a biocompatible floor by Fiemme Tremila to walk on.

Luci di Fiemme | Dolcerivo



## Architect@Work Milan 2021

MiCo, Milano Congressi - Milan  
3 - 4 november 2021  
[milan.architectatwork.it](http://milan.architectatwork.it)



## RETURN IN PRESENCE

From 15 June trade fairs can re-start in Italy! It's time to focus again on establishing that precious face-to-face contact everyone has been longing for.

On wednesday 3 and thursday 4 november 2021, MiCo - Milano Congressi will open its

doors again for the 7th edition of Architect@Work Milan.

"Oxygen" is the theme of the live lectures, the materials exhibition and photo galleries. Many exhibitors already confirmed their presence.

## INNOVATIVE IDEAS FOR TOMORROW

The region's leading platform for regional design and creativity, as well as an active catalyst for the growth of the creative community in the UAE, Dubai Design Week's 2021 edition will take place 8-13 november.

Staged in strategic partnership with Dubai Design District (d3), the festival's varied programme consists of design-related events, exhibitions, installations, competitions, talks and workshops across multiple creative disciplines. Key components of Dubai Design Week include the region's leading fair for high-quality, original design, Downtown Design; MENA Grad Show, an exhibition of impact innovation projects

from students studying in universities across the Middle East and North Africa region; Abwab, the annually remodelled, interactive platform for creative talent from the Middle East, North Africa and South Asia; alongside an extensive, hybrid talks and workshop programme.

Dubai Design Week is owned and managed by the Art Dubai Group, staged in strategic partnership with Dubai Design District (d3), and supported by Dubai Culture & Arts Authority and A.R.M. Holding.

## Dubai Design Week 2021

Dubai Design District (d3) - Dubai  
8 - 13 november 2021  
[www.dubaidesignweek.ae](http://www.dubaidesignweek.ae)







Announcing new dates for 2021

**ICFF 2021**  
Javits Center - NYC  
14 - 15 november 2021  
[icff.com](http://icff.com)

## CONTEMPORARY FURNISHING DESIGN

With its emphasis on original and sustainable design, ICFF presents a broad range furnishing product for residential, contract and hospitality environments to an audience of 10,000 architects, interior designers, retailers, distributors, developers, and press. ICFF and the co-located WantedDesign Manhattan bring together over 350 established and emerging design brands from more than 30 countries.

On the show floor, attendees will also have opportunities to find inspiration through ICFF Talks, a focused lineup of panel sessions, keynote presentations, and intimate conversations led by the most iconic names in the industry. Furthermore, opportunities to widen professional networks are boundless. From organic meetings on the show floor to evening events, attendees and exhibitors join together to exchange business strategies while strengthening relationships in the design community.



MILANO ARCHITETTURA DESIGN EDILIZIA

**22|25 NOVEMBRE 2021**  
**fieramilano**

**MADE expo 2021**  
Fieramilano - Rho (Milan)  
22 - 25 november 2021  
[www.madeexpo.it](http://www.madeexpo.it)

## A LOOK TO THE FUTURE

MADE expo 2021 is the place where innovative products and solutions for comfort, sustainability, safety, quality and speed of construction show off their technical value to designers, businesses and the national and international world of distribution. Design, development, restructuring, requalification and maintenance are interpreted by MADE expo 2021 in an unprecedented layout that facilitates

professionals visit, fostering an encounter of technical challenges and innovative solutions and of supply and demand. MADE expo is looking to the future: the contents and proposals on offer at the 2021 edition mean that it is a highly effective media tool, able to interpret the evolution of the construction world and move forward together with businesses in new and exciting scenarios.



**MAKE THE BEST CHOICE  
TO BUILD THE FUTURE.**

**FRIULPARCHET**  
PASSIONE ITALIANA PER IL LEGNO

Wood floors since 1927

It's been 15 years since we have started an awareness campaign focused on reforestation, from that moment our attention has been turned to eco-environmental problems and to the future of the green sources of our planet. Idea is very simple:  
**replant the same quantity of trees needed to produce our wood floors.**



## “Draw, love, build - L'architettura di Sauerbruch Hutton”

M9, Museum of the 20th Century -  
Mestre (Venice)  
Until 9 January 2022  
[m9museum.it](http://m9museum.it)



### SAUERBRUCH HUTTON'S ARCHITECTURE

The exhibition covers the last 30 years of Sauerbruch Hutton's work, and stretches across the entire upper level of the M9 – Museo del '900, itself a flagship design by the office. It will contain over 60 architectural models and more than 100 drawings. An accompanying programme with lectures and guided tours, held both digitally and on site, offers the opportunity to

deepen the content. As part of the exhibition, the documentary film by Harun Farocki, Sauerbruch Hutton, will be screened. The film features the work, as well as the working methods, of the studio. An app for iPad and smartphone complements the displayed models and provides additional information with texts, drawings, photos and films.

**Domotex 2022**  
Hannover Messe - Hannover  
13 - 16 January 2021  
[domotex.de](http://domotex.de)



### NEW SPACE FOR INSPIRATION

Domotex 2022 opens its doors in Hannover from 13 to 16 January with numerous innovations. Deutsche Messe has used the pandemic timeout to adapt the world's leading trade show for carpets and floor coverings to changing market conditions and develop it strategically. The most important aspect is

the so-called 2-world-concept with the division of the trade show structure into the two labels 'Carpets & Rugs' for carpets and mats (Halls 2-7) and 'Floor & Wall' for floor coverings and wall products for the parquet, carpet and resilient LVT segments (Halls 11-13). In addition, many new formats await exhibitors and visitors alike in the halls.



Piana Srl la base del tuo spazio.  
In Piana Srl, tradizione e innovazione si trasformano dal 1982 in prodotti di pregio.

Corso XXV Aprile 73/C - 13048 SANTHIA' VC  
[WWW.PIANAPROFILI.IT](http://WWW.PIANAPROFILI.IT)



**Imm cologne 2022**  
Koelnmesse - Cologne  
17 - 23 January 2022  
[www.imm-cologne.com](http://www.imm-cologne.com)



### THE RELAUNCH FOR THE INTERIORS INDUSTRY

Trendsetters and creative newcomers will present the innovations for the coming year at imm cologne, the international interiors show in Cologne.

The imm cologne isn't just the very first interior design show

of the year, it's the first choice for international exhibitors and professional visitors from all over the world as well.

This furnishing trade fair showcases inspiring interior design ideas and provides markets with new impetus. And the major innovation drivers, market leaders and brands will be there.



INTERNATIONAL B2B FAIR  
OF HORTICULTURE, GARDEN AND LANDSCAPE

**Myplant & Garden 2022**  
Fieramilano - Rho (Milan)  
23 - 25 February 2022  
[myplantgarden.com](http://myplantgarden.com)

### INTERNATIONAL GREEN EXPO

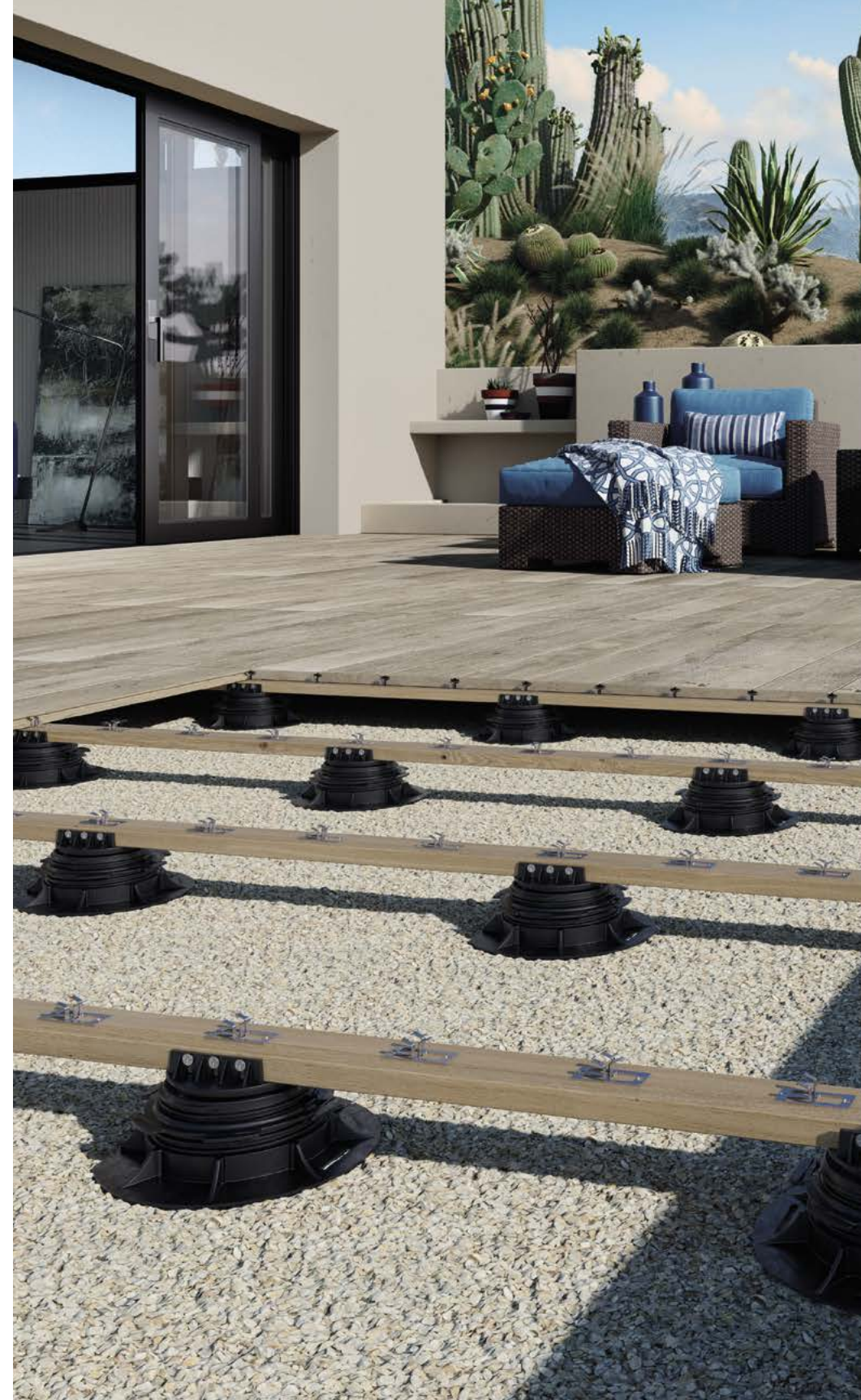
Myplant will manage a new, more complex scenario after years of constant growth – as far as business opportunities, exhibiting surface, number of exhibitors, visitors, meetings and events are concerned – that have boosted the horticulture and gardening markets.

The aim of Myplant will be to restart together and to lift once again the garden industry: from research to design, from seeds

to forestation, from production to distribution.

Myplant wishes to rebuild a horizon of growth and development for all operators with renewed strength. Myplant & Garden is the driving force for the garden industry. It is the only trade fair that presents and promotes the whole chain through its 9 exhibiting sectors: nurseries, cut flowers, decoration, design, machinery, services, garden care, pots, garden furniture.

The offer exhibited at Myplant, the innovations and the unique solutions presented have made the event the place-to-be in which the operators multiply their potential by meeting and interacting, activating a virtuous green chain that covers services, plants, decoration, design and much more, creating value, culture and business for the whole industry.



## Disegna il tuo spazio

### PEDESTAL PRIME® PER TRAVETTO IN LEGNO



PEDESTAL  
PRIME®

Abbiamo reinventato il supporto per **pavimentazioni sopraelevate esterne**. Il supporto regolabile Prime con testa per travetto in legno è la soluzione più flessibile, elegante e sicura mai vista per terrazzi, decking e bordi piscina.

Le **prestazioni di livellamento** della testa basculante, che compensa pendenze fino al 5%, permette di **ottenere una pavimentazione sempre piana** senza altri accessori o accorgimenti.



## eternoivica

[www.eternoivica.com](http://www.eternoivica.com)





# THIS IS WHY WE LOVE PARQUET

**1** It comes from a raw material, wood, that is both sustainable and renewable

**2** It's a material that requires extremely low energy consumption in its production phase

**3** It's one of nature's most amazing constructions

**4** It can be transformed into a work of art in the hands of the craftsman

**5** It's lovely to see, to touch... even to smell!

**6** It's elegant and has eternal charm

**7** It helps maintain the ideal microclimate

**8** You can walk barefoot over it

**9** It provides a soft surface for toddlers to fall on

**10** It's elastic, and this makes it the ideal flooring material for indoor sports

**11** It's warm

**12** There's an infinite number of wood species, formats, and finishes to choose from. It's a multi-faceted décor complement that gives each person the chance to express his or her character

**13** It's easy to clean and care for

**14** It can be regenerated an infinite number of times... and accompanies us for our entire lives



# OH MY WOOD!

PANTONE 2021 EDITION

## Equa

A versatile and contemporary door available in numerous wood or lacquered finishes. Equa comes in a swing or sliding version.  
[ferrerolegno.com](http://ferrerolegno.com)



## Double the comfort!

2-Seater Sofa is designed on the basis of Armchair 366 - an iconic Polish armchair designed by Józef Chierowski in 1962. A perfect complement to retro-style interiors, it will also look great in a modern space adding a touch of nostalgia to it.  
[366concept.com](http://366concept.com)



## Argo Sofa Love Seat

Sinuous lines in the armrests and geometric shapes in the seats flow together into the Argo love seat sofa, perfect to enjoy a relaxing moment in your leisure time. The curved wooden feet, externally fixed, are the key element of this sofa. The armrests and the wide backrest, made up of nautical woven ropes, create a refined play between material and volume, in line with the style of the whole collection.  
[talentisrl.com](http://talentisrl.com)



## PANTONE EDITION

## Totem

This sideboard features an original, out-of-the-box colour scheme. The totem units leave room for all combinations: modern and colourful, or delicate and naturally inspired finishes.

[santaluciamobili.it](http://santaluciamobili.it)



## An unexpected classic

Each single detail turns the line in a contemporary movement. The bedhead of the Bob bed is made of a soft padding. The cover is completely removable. It can fit even the smallest urban spaces, thanks to its dimensions.  
[noctis.it](http://noctis.it)



## Dandy Plus

The research conducted by Scavolini, thanks to the partnership with Fabio Novembre, has resulted in an innovative project that looks to the near future, reinventing its past. On the one hand, the shapes of Dandy Plus recall the historic best-selling Scavolini model from the Eighties (specifically, Dandy), but on the other it reveals itself to be a clear tribute to Italian design, characterised by distinguishing features, soft curves and bright colours.

[scavolini.com](http://scavolini.com)



## Enfold Sideboard

Made from a lacquered steel that gently enfolds its top and bottom in solid oak, the Enfold Sideboard fuses cold and warm materials for a unique expression, paired with the vibrantly modern expression of its ridged steel doors. The design comes in two sizes: one vertical and one horizontal.  
[professionals.muuto.com](http://professionals.muuto.com)



# Getting to know timber: Walnut

Let's talk about National or Blonde Walnut (*Juglans regia*) and Black or Canaletto Walnut (*Juglans nigra*). Parquet laid with these 'sustainable' timber species are considered remarkable for their expressive and aesthetic qualities

GIANNI CANTARUTTI



Walnut (*Juglans regia*) is a fruit tree from the botanic family of Juglandaceae. There are about sixty species of tree in this family divided into seven types. The one we are talking about is the *Juglans*. The two main species of walnut which are known more or less everywhere nowadays are the national or blonde walnut (*Juglans regia*) and the black or Canaletto walnut (*Juglans nigra*). Both give a highly appreciated timber used for many different things, from furniture to flooring and cabinetry.

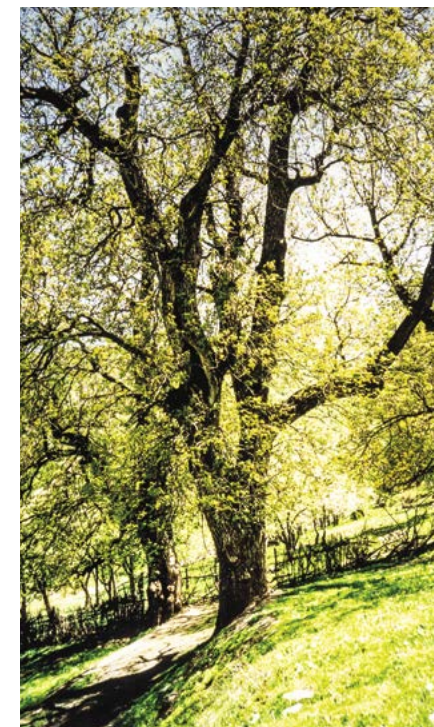
## NATIONAL WALNUT AND BLACK WALNUT: HISTORY

National walnut was one of the first fruit trees to be cultivated by Mediterranean peoples.

*Jovis glans* – Jove's acorn – was the ancient name for the fruit of the walnut tree, connected both to the divine and the mystic union of the two polarities of masculine and feminine. Pliny the Elder in his "Naturalia Historia" described the fruit of the walnut tree showing its importance, thanks to the ancient Greeks who imported it from Asia. All civilisations have attributed particular meanings and therapeutic properties to the walnut tree. The origin of the national walnut is central Asia, an area with now includes Kazakhstan, Kyrgyzstan and other neighbouring countries in the Himalayan mountain chain. The black walnut's origins are in the United States of America. Nowadays, because of the economic importance of its timber, the walnut tree is cultivated in Europe too, especially in Eastern European countries.

## CHARACTERISTICS

The walnut tree can grow on average to a height of 25 metres and more. In Kyrgyzstan even today we can find trees in the wild higher than 25 metres and with a diameter of more than a metre. The tree can live longer than a couple of centuries. It is grown in flat and



hilly areas and is often found on farmland near the farmhouse. The walnut is a solitary species which does not share space with other plants as it is subject to the phenomenon known as 'allelopathy' (also called chemical competition or root antagonism), which is the production at a root level of metabolic substances (root toxins) which are poisonous both to plants of the same species and others, inhibiting germination or poisoning the roots of other large plants cultivated nearby. The heartwood of the national walnut is light brown or brown, sometimes with gold highlights in the grain. Canaletto walnut is dark brown, sometimes tending towards black. Specific weight for both species is on average about 600 kg. per cubic metre. The timber can be worked quite well except for making curves.

## NAMES

There are different species which are called commercially by the name Walnut, accompanied by various other additions for example Bolivian Walnut (*Yesquero-Cariniiana excelsa*), Daniela Walnut (*Ovangkol-Guibortia ehie*), Tanganyikan Walnut (*Aniegrè-Aningeria robusta*) and Brazilian Walnut (*Imbuia-Phoebe porosa*).

This improper way of promoting very different species, lumped in with national walnut only because they resemble its colour, linked to the possibility of providing these other substitute timbers at a lower price than national walnut has led to blonde walnut being used less, even though there is a good supply on the market. "Fashion" has also meant that Canaletto walnut, in spite of its cost, is more valued. Maybe also because it offers greater uniformity of colour from an aesthetic point of view, thanks to the steaming process used on new timber.

## A NOBLE WOOD

The burls and feathering of both species, national Walnut and Black walnut, are famous, appreciated and sought-after, even from their early growth. They are still used to enhance every style and taste.

Walnut is considered a noble wood, equal to Mahogany and Rosewood, for laying intricate geometric and inlaid floors and superior to oaks (downy oak, durmast, English oak). Parquet laid with these species are special because of their aesthetic and 'expressive' qualities, especially blonde walnut. Campana walnut is still considered the best for furnishing, while that from Ferrara is excellent for its burls and used for luxury vehicle interiors, such as Bentley and Mercedes. Creative architects and designers, as well as famous ones, continue to suggest these 'sustainable' timbers for projects where careful craftsmanship is needed to give lustre to the finished products (an example is the furnishing and décor in Villa Necchi in Milan, a good part of which is in national walnut). In the Lignamundi xylotheque in San Giovanni al Natisone, where there are over 1000 timber species used nowadays in industry and craftwork all over the world, you can see the spectacular possibilities of this timber in panels and veneers and also in beautiful objects, tables and floors.



## FIRST RENOVATION LACQUER

No sanding and multi-surfaces



# OUR BESTSELLERS - SIMPLY STUNNING

Customized, natural and easy to care for -  
the veneered skirting board on spruce wood  
is the ideal companion for your elegant wooden floor.

[www.pedross.com](http://www.pedross.com)



**Long lasting renovation without  
sanding down or replacing the floor**

- Multi-surfaces: all wood floor finishes, laminated floors and PVC, vinyl, LVT floors
- Conceals scratches\*, revives tarnished floors
- Single coat system
- Perfect adhesion, excellent grip, without primer
- High chemical and scratch-resistance
- 2-component with hardener

\*Surface wear & tear: regular use and small scratches



More information at  
[www.carver.it](http://www.carver.it)

**CARVER**  
by **Blanchon**  
GROUP

**PEDROSS**  
DIE LEISTE · THE SKIRTING · IL BATTISCOPA

[info@pedross.com](mailto:info@pedross.com)  
[www.pedross.com](http://www.pedross.com)

Partner of  
**CLIMATE  
NEUTRALITY  
ALLIANCE 2025**





The clever restoration of an attic transforms a poky, uncomfortable place into a cosy, welcoming home

TITO FRANCESCHINI

Cuisine

Our psychological and physical well-being depends on living in a light and airy atmosphere. For this reason, one young couple decided to completely transform the space in an attic to turn it into a warm, welcoming home. The renovated apartment is 65 sq.m. on one level on the top floor of a new building containing eight living spaces. The attic was narrow and uncomfortable because of the limited spaces and the sloping ceiling. It needed careful planning to make it a multifunctional open space. Nicola Letizia, who did the architectural plan for the interior design explains, “*The couple’s requirements were very clear. They wanted an airy, functional, minimalist place. Faced with the available space, the priorities were to let in as much light as possible and to make use of every available centimetre. The first need was met by using sliding glass to separate the living area from the outside terrace, which was designed to be a natural extension to the home. It was conceived as an open-air room to bring the outdoors into the house. The second objective of optimising space was achieved by a complete revamp of the original layout and by careful attention to fittings, colours and materials*”.

**THE ATTIC CENTIMETRE BY CENTIMETRE**

To meet the clients’ demands, all the existing partitions had to be removed to make a single open space which includes a kitchen, living area and home office. The latter is partially screened from the living area by a wall which is designed to hold the TV cabinet on one side and a work desk on the other. A small hallway has been created to lead to the sleeping area which not only separates the bathroom from the double bedroom but also makes use of the space for a walk-in wardrobe. Careful attention has been paid to the fittings, specifically designed by the architect to be inserted between the perimeter walls and the roof pitches. There are two main themes on the colour front. One clear and ethereal as represented by the white on the ceilings, walls, furnishings, cupboards and window frames, the other warmer and cosier as represented by the rust-coloured wall in the living area and the oak floor. The latter with its knots and evident grains, is used not only for the surface to walk on, including the sleeping area and bathroom, but also for the island in the kitchen and the platform for the TV cabinet. The result is a sophisticated intermix of colours and textures, enhanced further by the careful planning of the position of light fittings.





**WOOD FLOOR:  
IMPRESSION BY  
WOODCO**

Impression fully embodies artisan mastery, with pieces that have been completely worked by hand. Manual techniques have given life to unique boards with an inimitable style, characterised by the typical signs of time and harmonious finishes. Each board is hand scraped and wired brushed. The surface primed with Osmo oil-wax absorbs light without reflecting it, creating a natural matt surface, leaving the authentic appearance of the wood intact. The natural oil-wax based primer used has a dry residue made up exclusively of natural elements to give the floor optimal resistance to wear, making it easy to maintain, repair and restore.

**woodco.it**



OH MY

# WOOD!

## Red Passion

### Mixu

Quiet in form and near endless in possibilities, Mixu is a sustainable and versatile collection of chairs and stools that can be completely customized to suit the needs of any context, environment, or desire. This three-part system of seat, backrest, and base can be personalized with myriad color and texture combinations to create a silhouette whose softly rounded geometric curves and minimal gesture create a perfect canvas for material expression.

[arper.com](http://arper.com)



### New wave

This modern pendant light is made from two pieces of wood veneer, one set inside the other, that feature two distinct yet complementary colors. The two pieces of wood are bent and shaped into a seemingly endless, sinuous shape which produces the effect of solidity while simultaneously achieving an elegant structural balance.

[ylighting.com](http://ylighting.com)



### Jannis

Jannis is defined by a contemporary rigour that draws inspiration from the past, revealing its personality in the details: the wooden structure, lightweight to the eye but solid, holds the single seat cushion and the backrest, and is characterized by the metal feet with a brass finish of the feet. The front leg rises to define the thin profile of the armrest and closes in the semi-circular tip, again with a brass finish. The frame and legs are connected by steam-curved beech wood arches, an element of continuity with the heritage of Gebrüder Thonet Vienna.

[gebruederthonetvienna.com](http://gebruederthonetvienna.com)

### Wooden Dolls

The Wooden Dolls by Alexander Girard are a large family of wooden figures representing human and animal characters. Girard designed them in 1952 for his own use as decorative objects in his Santa Fe home. These originals, which are part of the Girard estate in the holdings of the Vitra Design Museum, served as models for the current re-editions. Precisely replicated down to the last detail, the many different Wooden Dolls are still fabricated and painted by hand today, just like the vintage pieces by Alexander Girard.

[vitra.com](http://vitra.com)



### The Dots from Muuto

Designed by Norwegian designer Lars Tornøe, The Dots is a series of three different sized coat hooks available in different colours. They suit a wall with or without clothes and you can arrange them on your wall in the pattern you like.

[muuto.com](http://muuto.com)



### Fly Agaric

The fantastic properties of this mushroom will fill the room with good vibes. Fly Agaric makes a collectable, or a gift for that special fun-loving person. Designed by Geckeler Michels.

[sancal.com](http://sancal.com)

### Ademar Coffee Table

A solid structure combined with a sober design: Ademar is a new and elegant Table Collection proposed by Bross and designed by Giulio Iacchetti. It is possible to choose between natural oak, thermo-treated oak and Canaletto walnut top finishes.

[bross-italy.com](http://bross-italy.com)





# CALIFORNIA DREAMIN'



Nature, the colour of the wood,  
close attention to detail and space -  
an interior full of personality and elegance  
enhanced by the charm of Afromosia

FRANCESCA FERRARI





Los Gatos, in the county of Santa Clara in the state of California in the United States, is famous for its spectacular views of mountains, its parks and its vineyards. In short, the ideal place to relax, surrounded by greenery and nature. Peace and relaxation are precisely the sensations you get when you enter this splendid Californian home with Afrosmosia parquet throughout. The floor-length windows give a breathtaking view. The interior is on different levels with clean

white walls which contrast with the character pieces of décor where ethnic and designer elements are mixed together to give a balance between vintage inspiration and contemporary feeling. Wood, which is also used for the internal staircase, contributes to creating a warm and elegant atmosphere, uniting the different spaces and enhancing the interior with its elegant shades and deep graining.







**Stilnovo by  
Stile parquet**

Stilnovo is a two-layer wood floor collection available in 10 wood species to be combined with a wide range of sizes, grades and finishes. Six sizes: from 70 wide to the big plank 240 mm wide. All of them available with oil, varnish and the unique Nature UV and Traffic UV finishes. [stile.com](http://stile.com)





# Isolmant Top Incollapavimento laid with glue... without glue!



Adhesive layer for an easy installation



Specific for wooden flooring



High acoustic comfort



Low Thermal Resistance

## ISOLMANT TOP INCOLLAPAVIMENTO:

#clean

#fast

#ecological

#efficacious



www.blauer-engel.de/uz156

The flooring replacement operations required **low thicknesses and non-invasive work**, for this reason the technique and the method of installation are fundamental.

**Isolmant Top Incollapavimento is the most innovative solution for the laying of wooden floors** thanks to its technical skills, for its low thickness and specially for the self-adhesive element: the floor is fixed directly on the adhesive layer on the upper side of the product, **ensuring stability and tightness** without using any glue.

Isolmant Top Incollapavimento guarantees excellent acoustic insulation, it is an ecological product and it can be installed even underfloor heating systems: **if you love your floor, choose the Top.**

**isolmant**  
acoustic and thermal solutions

TECNASFALTI Srl

Via dell'Industria, 12 - loc. Francolino - 20074 Carpiano (Mi) - Italy  
Tel. +39 02 9885701 - Fax +39 02 98855702 - [clienti@isolmant.it](mailto:clienti@isolmant.it)

[isolmant.com](http://isolmant.com)  
[isolmant4you.it](http://isolmant4you.it)  
[sistemapavimento.it](http://sistemapavimento.it)



  
ITALPARCHETTI

Via Aleardo Aleardi, 77  
31029 VITTORIO VENETO (TV)

Tel. 0438 500 939  
Tel. 0438 501 464  
Fax 0438 501 461

[info@italparchetti.it](mailto:info@italparchetti.it)  
[www.italparchetti.it](http://www.italparchetti.it)

MADE IN ITALY

## ASSITO DELLE ALPI

The **Assito delle Alpi** collection is Italparchetti's flagship range; it is a large prefinished plywood product that is 15 mm thick and suitable for laying on floors with underfloor heating. **Assito delle Alpi** consists of a layer of top-quality solid wood glued onto birch multiply; this combination is stable and easy to lay, even on floating floors. Its finish with water-based varnishes and natural oils makes this a very strong and healthy parquet floor. The different widths and lengths available offer multiple solutions so you can adapt your flooring to the style of your home.

**ASSITO DELLE ALPI** | Teak - premium - Brushed UV oil finish

Arch. Lino Restucci  
Studio Profgettati Interior Design



## SKEMA

In photo: Yles by SKEMAidea. When you cross the threshold of the house, you are greeted by an intriguing Yles, wood floor, a Kytos design characterised by the pattern defined by the shape of a Table but with 6 sides, two inclined at 10 degrees, which chases each other and intertwines through the prominence of the dark tones of the Carbo finish oxidised in depth, with a Texture and Brushing effect, finished with Natural Oil.



# WOOD INSPIRATION

Skema combines the high technology to the beauty and from the design's surfaces, that are dedicated to all the living context, comes to the world of evolutive furnishing. This thanks to SKEMAidea, the division that has the signature of the Art Director Franco Driusso.

[skemaidea.com](http://skemaidea.com) - [skema.eu](http://skema.eu)





# MEDITERRANEAN ATMOSPHERE

We're in Sardinia, on the Cagliari coast. A holiday home designed for healthy living with biocompatible 'active well-being promoters' like wood, used indoors and outdoors

TITO FRANCESCHINI





The white rocks, the green perfumed vegetation, sun and sea - the Mediterranean - a gift of nature. Entering this miracle without disturbing its perfection requires great delicacy. And civility in the best sense of the word. A holiday place is where we can feel at our best. There is no gap between nature and living, between inside and outside. So, even the swimming pool is part of the house, immersed in nature but as one with the living quarters because of its generous teak floor surrounding (Fiemme's Esterni collection). The table under the porch is in the same wood, its joints and slats reflecting the floor.

#### RATIONALITY, SIMPLICITY AND WELL-BEING

The house has an area of 300 sq.m. on two floors, with an intelligent and sensible distribution of space. Indoor healthy living, biocompatible materials as active agents of well-being, harmony between nature and man: this is the philosophy embraced with passion and transformed into the use of wood for much more than floors.

Fiemme Tremila's Burma teak embraces the whole project. The extraordinary incandescent beauty and strength of this material is the defining factor of the décor, with complementary features also from Fiemme 3000. Biocompatible modules like the snack bar in the kitchen, the elegant, simple staircase, the shelves in the living area and many other things, including those in the bathrooms. In the living area and master bedroom there are wood carvings. The bedhead and bedside tables have been incorporated into a wall, using the same wood as the structure designed as a wardrobe.

#### PROJECT

##### Series:

- Fior di fiemme (indoors)
- Fiemme Exteriors (outdoors)

##### Materials:

- Fior di Tè (indoors)
- Teak (outdoors)

##### Choices:

- Without knots (indoors)
- Single (outdoors)

##### Finishes:

- Brushed (indoors)
- Sanded (outdoors)

##### Treatment:

- Fiemme bioplus 3000 oil

**fiemmetremila.it**





# Getting to know timber: Olive

Prized by Mediterranean people, this long-living tree produces a hard, compact timber with an eye-catching grain

GIANNI CANTARUTTI



The olive tree (*Olea europaea* L.) is well known everywhere, particularly for its fruit, which gives us its multi-purpose oil. The olive is much prized by Mediterranean populations. In ancient Greece, the olive tree was thought to be immortal. Ulysses carved his marital bed, the heart of his home, from it and blinded the cyclops Polyphemus with an olive trunk. The origin of the species seems to be central Asia and it has two subspecies: **Wild Olive** (*Olea europaea* L. sub. *Europaea* var. *sylvestris*), which grows in rocky terrain, and the **Domestic Olive** (*Olea europaea* L. sub. *Europaea* var. *sativa*), which is grown in many parts of the world (Australia, South Africa, California, the whole Mediterranean basin, Central Asia and the Middle East).

## CHARACTERISTICS OF THE TREE

The Olive tree grows slowly, but can even reach a height of 20 metres or more and occasionally can have a trunk circumference of over 15 metres. It can even live for some thousands of years. For example, in Salento (Puglia) there is a thousands of years old olive tree called 'La matusalemme' (Methuselah) on whose exact age there is some disagreement as the heartwood cannot be examined. Olive timber is usually more or less yellowish interspersed with darker rose-coloured grain when new. Depending on where it grows, olive timber has different intensities of its base yellow colour which contrasts with the beautiful dark rose grain. Hard and compact, it is used for expensive furniture, stairs, parquet, tables of various sizes. Sometimes even the trunk cross-sections are used. Numerous hand-crafted objects of every shape and size are produced from its timber. In particular, lathe worked articles for the kitchen such as pestles and mortars, spice mills, bread boards, knife handles, salad bowls and more.

## OLIVE PARQUET

Olive timber is renowned for being hard-wearing. Therefore, it is used to make attractive wood floors. Parquet made with this type of wood are special for their wealth of colours and appearance, as mentioned above. Olive parquet is for environments with space and light so that its chromatic and decorative qualities can be admired to the full. Usually architects, designers and interior decorators advise using Olive in combination with other types of timber or different materials like marble, to make geometric shapes beautiful to look at. In the Lignamundi xylotheque in San Giovanni al Natisone, where there are over 1000 timber species used nowadays in industry and craftwork all over the world, you can see the spectacular possibilities of this timber in panels and veneers and also in beautiful objects, tables and floors.



## ORIGINAL PARQUET

The Picasso collection represents the beauty of an oak board in all its authenticity, as mother nature gave us. Its colour range enhances its warmth and modernity. The naturalness of the unique choice is combined with the plus of Original Parquet's SEVEN+ technology, creating a 100% Made in Italy collection with excellent technical performance. The product is built in two layers, 4 mm. of Oak and a birch plywood to perfectly balance the movements of natural wood. The Zero emission of Formaldehyde, the micro-bevelling on each of the 4 sides and the precise male-female profiling complete the very high technical standards of this collection.

Available in 3 dimensions: 150 mm width, 190 mm width and 240 mm width. Lengths from 1850 to 2350 mm.

Available in 3 different treatment of the surface: Brushed, Total sawn cut, Handscraped.

WOOD  
INSPIRATION

Original Parquet operates in three factories and its headquarters are located in Alfonsine, on the SS 16 Adriatica, in the heart of Romagna, just a few kilometres from Ravenna and its harbour. This creates a strong synergy which contributes to develop the company, especially for the logistical aspects, thus allowing streamlined and dynamic operations aimed at improving both production and services. The company boasts a long experience and great competence in its own sector.

Throughout the years, it has continuously invested its resources in technology, research and industrial plant design with the aim of realizing the multi layer pre finished floor, keeping however a leading position in the Walking industrial floor sector and in the solid wood range.

The whole production area is equipped with the most modern plant technologies, thus respecting the environment and the workers life quality, for the production of wood floorings.

[originalparquet.com](http://originalparquet.com)



# FLUID ARCHITECTURE

Boiserie as a design choice: doors, cupboards and containers are an important feature of interior design, whether they are decorative or hidden. Like a wood floor, boiserie has a discrete, but elegant presence

TITO FRANCESCHINI





This luminous attic right in the centre of Corato, Bari, is on the top floor of an 80s building and dominates the unchanging skyline of the town.

The restoration project encompasses the concepts of transparency and the harmonious use of colours and natural materials, which interact directly with the sun, sky, rain and night.

A design created from neighbouring, continuous spaces separated by transparent screens, made with frames using natural materials like wood. The spaces and the night and day areas are divided by wooden walls which in some cases are functional and serve as storage space, in others they separate the areas. The design choice to make extensive use of boiserie has a double purpose: on the one hand it makes a "utility" object (doors, cupboards, containers) into a true element of the décor, which is visible or hidden as required, while maintaining the perception of continuity and harmony in the different areas. On the other hand, its elegant appearance provides exclusivity to the project.

#### THE SPAZIO A GROUP

Spazio Associati is a technical studio of engineers and architects, situated at the heart of the town of Andria, which collaborates nationally and internationally.

It was founded from the ideas and experience of four professionals, each with their own speciality. Known also as SpazioA, it specialises in architectural and engineering design, landscape design, lighting design and graphic and virtual repairs.

**spazioassociati.it**





**SUGGESTIVE SCENARIOS**

The areas are designed to be functional for everyday life, but also to provide pleasant moments of relaxation in a refined, peaceful atmosphere. The main element in the home is the large open plan living area which includes the kitchen, dining room and living room with a TV and relaxation corner. This area is completed by a wide veranda, off-centre to the overall layout, which in the summer months connects directly to the dining area by large, glass sliding doors. The large windows enhance the natural light, which along with the artificial light, becomes a special feature which plays a fundamental role in the perception of the spaces.

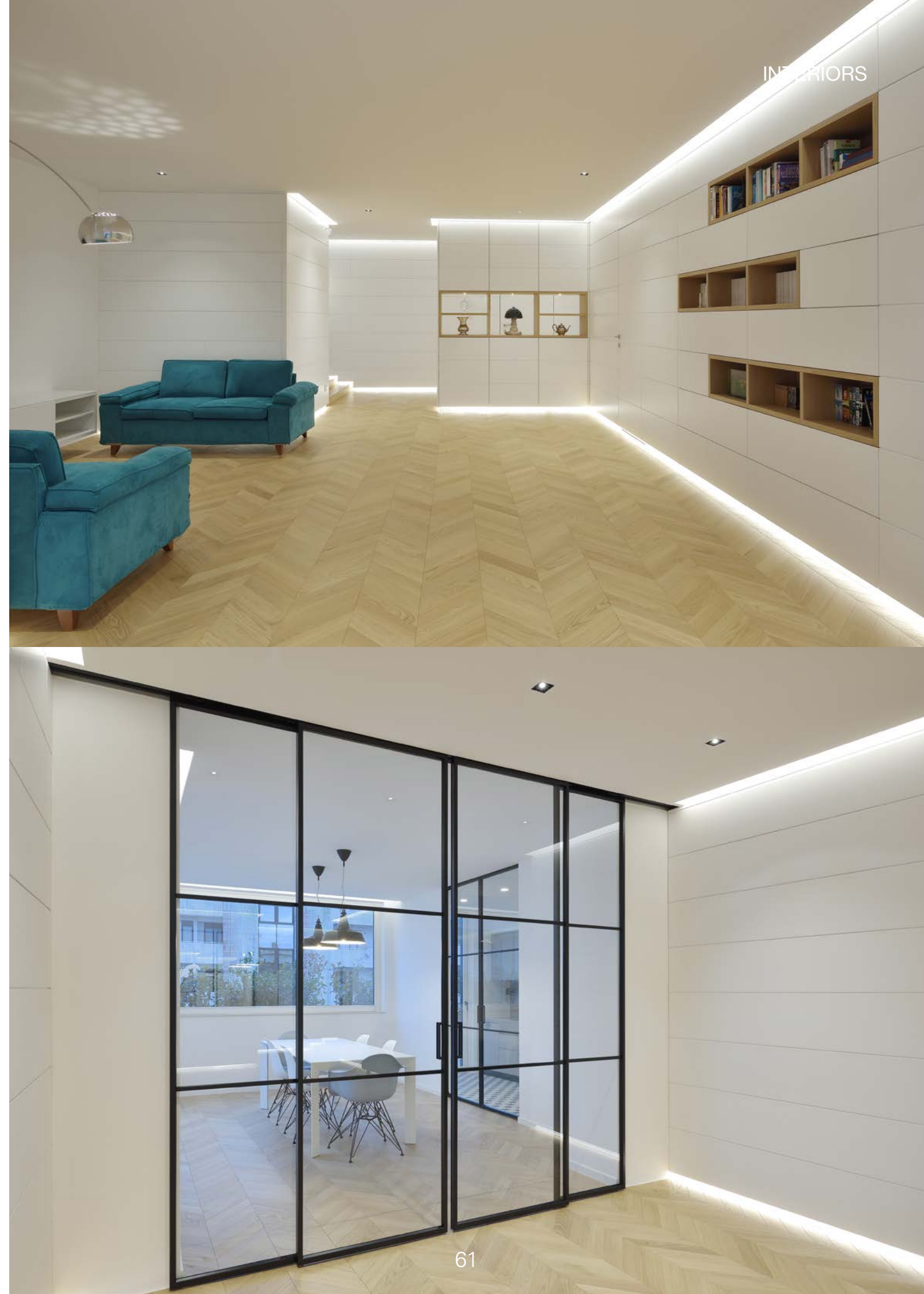
The lighting has been studied to create suggestive scenarios, highlighting the details of the architecture and at the same time guaranteeing functional illumination everywhere.

**THE PARQUET:  
SPINA NOBLESSE BY  
GARBELOTTO**

The Garbelotto Parquet company has used a floor which recalls the elegance of past times. The Hungarian herringbone (a laying technique used frequently in the past to decorate palace salons and the villas of nobility), has been reinvented by Garbelotto technology. The company supplies a prefinished parquet of 10 and 14mm thicknesses, 70/90/120mm widths and lengths from 300 to about 600mm, ready to be laid in herringbone design with 30° to 60° cut angles as required.

Noblesse has CE and CI (100% made in Italy), and, on request, FSC.

**garbelotto.it**





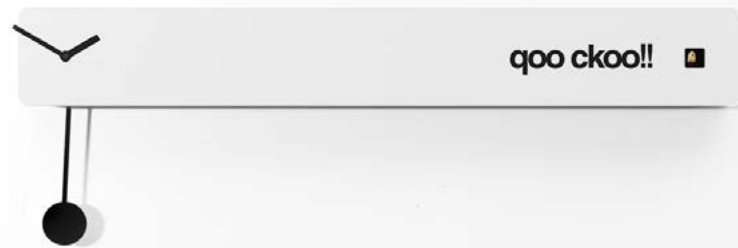
OH MY

# WOOD!

## Cuckoo

Q02 is the first clock that doesn't follow the trend of cuckoo clocks with a traditional birdhouse that have symbolised these type of clocks for years. The Q02 cuckoo function is displayed by a simple coloured horizontal or vertical line which is both innovative and effective. The pendulum and the writing 'coo ckoo!!', which give the idea of a little cuckoo bird, complete the clock.

[as-ps.it](http://as-ps.it)



## Remo Wood

Remo is a plywood chair that merges the producer's artisanal heritage with the latest manufacturing technologies. The chair's defining feature, the T-shaped backrest, is made possible through a sophisticated interlocking joint that attaches the curved seat to the horizontal back rest. This two-piece construction results in an ultra light but strong shell which offers exceptional comfort.

[plank.it](http://plank.it)



## Craftwand

Craftwand is an intelligent and modular wall system crafted from massive and untamed wood easy to build up and highly functional. The modular nature of the system means that as workspace demands change, the wall can be easily taken down and repositioned without the significant mess associated with typical drywall demolition and repair. The system also integrates invisibly standard electrical, communication, and pc wiring.

[craftwand.info](http://craftwand.info)



## Sofa bed

Ample Frej is a simple and curious sofa bed for multiple scenarios and settings. A gorgeous eye-catcher that has smooth and clear shapes characterizing the Danish design while buttons in seat and back intensify a modern and stunning mattress featuring the iconic Innovation Living three levels of a split back - vertical, rest and horizontal.

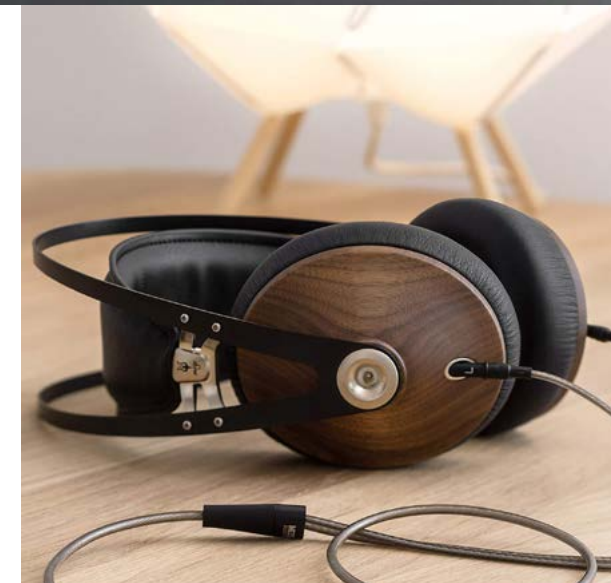
[innovationliving.com](http://innovationliving.com)



## Laptop Case

This wooden laptop case looks rigid and strong. Designed for Apple MacBook and MacBook Pro 15-inch, features leather and magnetic closing device. If you're a mac user, you can contact the designer 'Rainer Spehl' to purchase one or two.

[rainerspehl.com](http://rainerspehl.com)



## 99 Classics

The Meze 99 Classics delivers perfect natural sound even to the pickiest of audio lovers. The walnut wood earcups, soft earpads, and the spring steel headband will make the 99 Classics an heirloom rather than just a pair of headphones.

[mezeaudio.com](http://mezeaudio.com)



## Smart working

Handcrafted wooden bow tie, for formal meetings, but not too much.

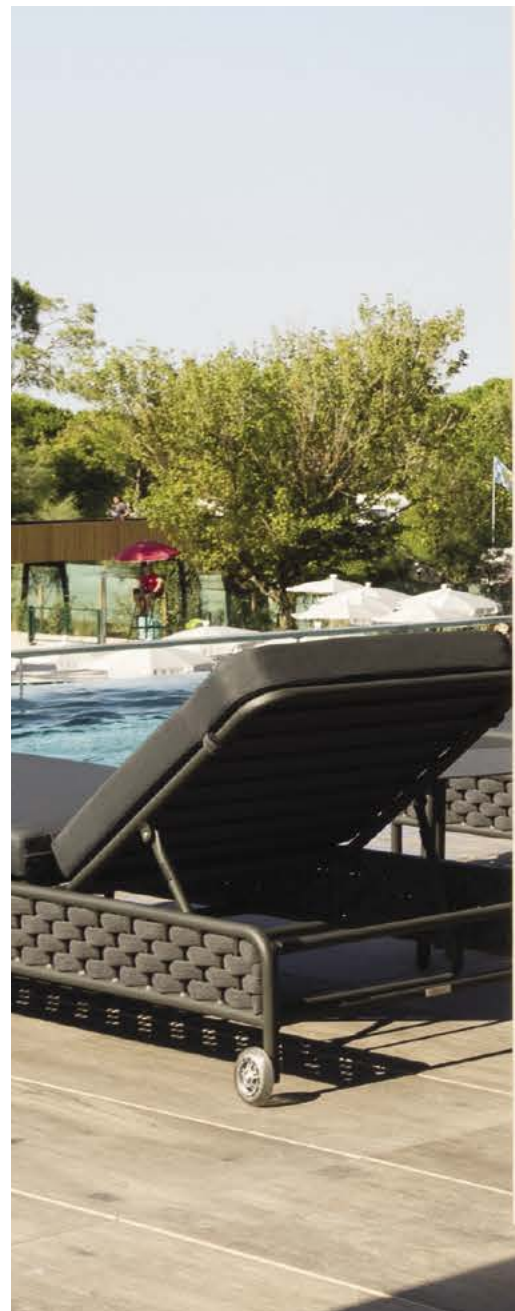
[ellys.it](http://ellys.it)



## ETERNO IVICA

One of the most recent and important works with Pedestal supports has been completed in Treporti Cavallino, in a seaside resort in the province of Venice, at the Mediterraneo Camping Village. This year the camping has acquired the much sought-after fifth star thus raising its quality standards to offer an even more special holiday.

This important recognition comes together with the creation of Le Terrazze del Mediterraneo: a seafront area consisting of a 2000sqm water park and a complex of three multi-service buildings. And it is right here, in the external Spa area, that Eterno Ivica has given its contribution for 1100 sqm with numerous Pedestal supports that have been able to cover heights up to 1,20 meters.



# WOOD INSPIRATION

*"We design and create our products to give support to those who design, install, and own a building. This concept has led to supports for raised paving, products for water drainage and accessories for waterproof coverings. Value-added solutions for buildings".*

Eterno Ivica is a company that for over 60 years has been working in the field of private, industrial building and architecture, the company is distinguished by the high degree of quality and innovation.

Eterno Ivica produces:

- Adjustable supports for exterior elevated floors
- Outdoor substructures for all kind of decking
- Roofing accessories for roofs and balconies waterproofing
- Accessories for liquid waterproofing
- Drain boxes, channels and other products for water drainage
- Products for sound insulation
- Design solutions for sound-absorption
- Silenced aeration and ventilation

**[eternoivica.com](http://eternoivica.com)**





# THE FASCINATION OF HERRINGBONE

## NOCCIOLIEVE

Imagine opening the door and leaving behind the noise, chaos and rhythms of the city to immerse yourself in a safe, healthy and solid place. Your home.

This project, like all those of Fiemme Tremila, is inspired by the concept of well-being in the home environment. The floor must act as a natural connection between the woods and the house: in this case made by a beautiful chevron pattern in Nocciolieve essence, one of the thermowood oaks from the Luci di Fiemme collection.

Fiemme Tremila was born from a forward-looking vision: to offer a unique, natural and absolutely healthy and biocompatible product. Our dream and our promise are to surround our customers' homes with nature and enhance their well-being. For this reason we have thought of a product designed and manufactured to last a lifetime and only made with natural materials and procedures. A totally biocompatible product, articulated in rich and variable collections able to accommodate and satisfy different customers' styles and tastes.

[fiemmetremila.it](http://fiemmetremila.it)



## LE SPINE COLLECTION

Le spine collection by Tavar is available in two different sizes and three patterns: italian herringbone (90°), french herringbone (45°) and hungarian herringbone (60°). These trendy and timeless patterns are ideal for both moderne and vintage design styles.

Tavar is a story about men, women and love for wood since 1950. Tavar strives to guarantee quality. The 100% made in Italy certification guarantees high technical standard. Tavar has always been attentive to designers and customers' needs. The history of the company is made professionalism, dedication and passion for wood.

In photo: french herringbone in natural european oak.

[tavar.it](http://tavar.it)





## THE ECLECTIC FORMAT FOR SPECTACULAR PARQUET FLOORS

Arrow by Woodco is the new parquet format that allows you to free your imagination and give shape to infinite laying designs. Real tribute to simplicity and uniqueness, because no element is the same if not in size (45 x 450 x 14 mm), Arrow allows you to create not only Italian herringbone designs, but also combinations, weaves and customized modular patterns. Part of the Signature collection, dedicated to architects and interior design lovers, it is available in eight different colours, all made of fine brushed Slavonian Oak.

[woodco.it](http://woodco.it)



## I CLASSICI COLLECTION

I.P.F. means research, tradition, care for details, passion and Italian creativity: the pre-finished wood floors, chevron, herringbone and the artistic compositions, combine style and design to 'green' living.

Along time I.P.F. has been improving the eco credentials of its flooring making changes to the materials used as well as their provenance: FSC European Oak has been sustainably harvested and all wood floors of the company are made with non-toxic adhesives and finishes.

In photo: European Oak 100% FSC, Chevron 10x90x610 mm, beveled, brushed, handlacquered for wax effect. Antibacterial finish, stain resistant, no additional maintenance, Class E1.

Collection: I Classici, color Aria.

[ipfparquet.it](http://ipfparquet.it)



100% MADE IN ITALY

In the heart of Trieste, a central European city, the choice of wooden floors fall on elegant and refined Natural Oak Noblesse® Herringbone, one of the oldest laying floor geometries. The wooden pieces inclined at 45 ° or 60 °, placed head to head, give a precious and classy floor that makes the rooms unique with its unmistakable design, creating a symphony of shapes, lights and materials. Garbelotto Noblesse® Herringbone is also available in Clip Up System installation. Parchettificio Garbelotto is a leader in the production of 100% made in Italy wooden floors. Since 1950, passion and style have sealed a creative union between innovation, art and design. All products are suitable for green building, eco-sustainable and certified, respect the environment and the raw materials come from controlled reforestation areas. The research and development department continually studies new proposals to meet the needs of the interior design world.

[garbelotto.it](http://garbelotto.it)



GAUTIER

The Gautier model in the Giorio Herringbone Collection by Alma, is reminiscent of the charm of old Parisian streets, where ancient and modern mingle to create new, elegant harmonies. Small 50 mm slats create a dense interlocking puzzle which highlights the most authentic characteristics of the wood. This parquet gives an original, sophisticated touch to any kind of space and can be matched with very different styles making it perfect for those who like to have a discreet originality.

[almafloor.it](http://almafloor.it)







## FASHIONS CHANGE, PARQUET STAYS

Wood has made a comeback and is an indisputable part of our homes. As well as being one of the few renewable and ecological raw materials, it adapts to every kind of living space, becoming a symbol which does not rely on fashions or seasons. Herringbone designs are becoming more and more popular, from the Italian 90° to the French 45° and the Hungarian 30° angles, they have the ability to make the most of any space.

Oak is the most sought-after wood because of its classic grain and shades as well as its suitability for tinting and colouring.

[friulparchet.it](http://friulparchet.it)



# ITALPROFILI®

RESISTANT TO TIME



**DUALSYSTEM  
EVOLUTION**



**RAISE-UP**



**DUAL SYSTEM EVOLUTION**  
THE JOIST SYSTEM SUITABLE FOR  
THE USE WITH CERAMIC AND  
DECKING FLOORING



**SUPPORTS RAISE-UP**  
THE LOWEST PAVING SUPPORT AMONG  
OUR RANGES OF ADJUSTABLE PAVING  
SUPPORT SYSTEMS



**CERSAIE**  
Bologna - Italy

COME AND VISIT US AT CERSAIE  
2021 TO DISCOVER ALL THE NEW  
ITALPROFILI PRODUCTS

27 - 09 / 01 - 10 - 2021

**HALL 32 - STAND B10**



[www.italprofili.com](http://www.italprofili.com)  
[info@italprofili.com](mailto:info@italprofili.com)





## KERAKOLL

Color Collection is the Kerakoll's brand new collection of colors and surfaces for interior decoration. The Color Collection features a comprehensive range of eco-friendly decorative paints and resins for floors and walls, coordinated in a unique palette of 150 contemporary colors and 15 sophisticated surface textures in line with the most refined style trends of today ([color.collection.com](http://color.collection.com)).

In photo: an eclectic home nestled in the hillside. A playful lair for a collector and a connoisseur of life, this former factory converted into a home reflects the owner's passion for colour, art objects and hosting good friends. Inside, an audacious red floor finished with the irregular texture of Legno+Color Small KK 114 is cast in the warm light of the sun.



# WOOD INSPIRATION

Kerakoll is the first company in the world to offer a comprehensive package of materials and services to build and live in healthy homes that won't harm the environment.

The company mission is embrace and promote the new low environmental impact approach to building and promote higher quality homes around the world through the use of eco-friendly building materials and innovative solutions focusing on the environment and on improving both health and quality of life.

[kerakoll.com](http://kerakoll.com)



# Getting to know timber: Chestnut

An imposing, majestic tree with ancient origins, which has been a precious source of nourishment for centuries. Let's find out about it together

**GIANNI CANTARUTTI**



The chestnut tree is a fruit tree of the botanical family Fagaceae, which includes different types. The main species are the European chestnut (*Castanea spp.*), the Japanese chestnut (*Castanea crenata*) and the United States of America one (*Castanea dentate*). All providers of timber for varied use.

The chestnut tree is one of the few plants which has nourished entire generations of poor people and farmers with its fruit. In fact, in the past it was considered a real treasure and a person who owned a chestnut tree was thought to be lucky and wealthy.

## A TERRIBLE DISEASE

At the start of the 40s in the last century, a terrible disease decimated millions of chestnut trees everywhere. Chestnut canker was one of the most destructive diseases to ever strike a forest tree species which produced fruit and timber. In America alone, it is estimated that more than three billion American chestnut trees were destroyed over 40 million hectares of land. It was an epidemic which

affected the American chestnut most as it is more sensitive than the European one (the epidemic died out as many cankers healed over and the tree was able to continue to grow).

## A LITTLE HISTORY

The origins of the chestnut tree date back to before the appearance of man. Fossil remains have shown that in the cenozoic era, over 60 million years ago, when deciduous trees started to appear on Earth, the ancestors of today's chestnut tree were present in the Mediterranean area.

With time, primitive man learned how to preserve chestnuts and use the timber of the chestnut tree, which is water-resistant, to build stilt houses and canoes.

The first centre for the cultivation and diffusion of the chestnut was in the Caucasus, between the Caspian and Black Seas around the IX century B.C. Pliny the Elder (23-79 A.D.) attributes the origin of the tree to Asia Minor and confirms that it was widespread in Italy. Pliny then discusses the use of its fruit in cooking and distinguishes six prized varieties of chestnut. During the rise of the Roman Empire and the conquest of new territories, cultivation of the chestnut tree spread outside of Italy and with time encompassed the whole of central and southern Europe.

## TECHNICAL CHARACTERISTICS

The chestnut tree is one of the trees which particularly characterises the countryside and culture of European Mediterranean regions, along with the olive and the vine.

A chestnut tree lives a long time and can reach impressive dimensions: up to 25-30 metres in height, with a trunk diameter, seen in some ancient examples, of over eight metres.

The timber is rich in tannin, an extract once used in the tanning industry to produce leather. The heartwood is a light brown/brown, with a different sapwood.

Average specific weight in the three species is between 450 and 700 kg per cubic metre, with 12% timber humidity. It can be used for carpentry quite well, but not curved.

Even though today its economic importance is marginal, its timber is still widely used in various ways: furnishing, parquet, vats, objects for outside use, poles, light and heavy carpentry, stairs and small objects. In the Lignamundi xylotheque in San Giovanni al Natisone, where there are over 1000 timber species used nowadays in industry and craftwork all over the world, you can see the spectacular possibilities of this timber in panels and veneers and also in beautiful objects, tables and floors.



## IMPERTEK

A new life for Manifattura Tabacchi in Rovereto: the hearth of the structure under a record Raised Floor realized with Impertek's supports.

WOOD  
INSPIRATION

For over 30 years, Impertek has been finding the better solutions in the outdoor raised floors laying field, meeting the architect's design needs and creating products that make the work of the installer easier and faster. Examples are the Balance Pro line, the most versatile and complete product on the market. The revolutionary system "All in one" satisfies every laying issue with 14 items, it covers heights from 25 to 1025 mm, automatically corrects slope and allows to adjust the height from the top thanks to TOPKEY.

[impertek.com](http://impertek.com)





OH MY

# WOOD!



## Inspired by a handbag

Part of the 'Objets Nomades' collection for Louis Vuitton, Patricia Urquiola's Swing Chair embodies the founding spirit of Louis Vuitton - how to make travel more comfortable for the elite and well-heeled. Made from nylon rope, she uses leather cushions for the perfect splash of rich color. And the chair has gold-plated hooks.

[louisvuitton.com](http://louisvuitton.com)



## Elmetta

Elmetta is a decorative, easily portable lamp, made of two main classical elements, a metal diffuser and a bent wood handle. The two elements, necessary for each other, create together a perfect contemporary set.

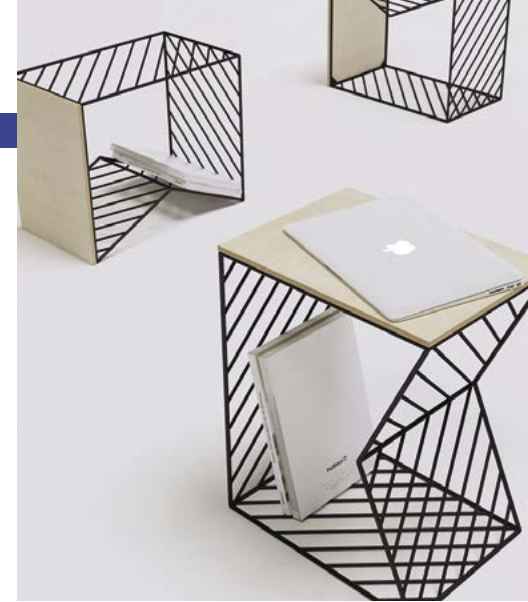
[incipitlab.com](http://incipitlab.com)



## In balance

'Equilibrium' bookcase relies on stacked angled modules that not only create a playful aesthetic effect but also integrate bookend functionality directly into the shelf design; is capable of holding over 120 pounds (54 kg) of weight over its five compartments. A walnut veneer exterior is produced with either white, celeste blue, or graphite interior, with custom colours available by request.

[malaganadesign.com](http://malaganadesign.com)



## Bedside table

When the wood is above, it can be used as a stool, side table and for storage. Turn it around, and the part flat of the grid is on top, so it can be used as storage or side table. Finally, with the 'V' form upward it can be used as storage. The main materials which conforms Bedside table is plywood and steel rods. Two materials which uses a lot Fail Gilmanov. This materials, between them, works very well for the colour contrast and the temperature of the materials.

[instagram.com/fagi\\_design](https://www.instagram.com/fagi_design)



## Made with love

Hand crafted from sycamore, walnut, oak and beech wood. Sealed with natural, food safe oil and wax. Made from responsibly sourced wood; foraged, recycled, reclaimed or sustainably grown.

[hopeinthewoods.com](http://hopeinthewoods.com)

SMALL BEAUTIFUL THINGS

## Nut ceiling

These lights feature a blend of premium materials, brought together in a creative and minimal design. Solid ash wood with grain textures and a lacquered finish complements the smooth surface of the white aluminum. A leather detail in dark brown connects the two sections while adding an eye-catching accent to the design.

[mzpa.co](http://mzpa.co)



## Intense black

This coffee table, characterized by a mysterious intense black colour and a particularly marked texture, is made of European field elm (Ulmus minor) and charred using the ancient Japanese Shou Sugi Ban technique. This technique makes the wood stable, durable, water repellent and even fireproof in a completely natural and ecological way.

[giannicantarutti.it](http://giannicantarutti.it)





## PIANA SRL

In photo an elegant oak parquet with a brushed finish laid in a herringbone pattern, Venezia model.



# WOOD INSPIRATION

In Piana Srl, "Tradition and innovation" have been transformed into quality products since 1982. Intuition, ingenuity, humility, passion and determination, are the small gestures that the founder Mauro Piana before and today his son Andrea together with his wife Alessia, have put at the service of the company day after day, making it grow to become an Italian excellence.

Piana Srl is able to effectively meet the complex needs of an increasingly complex and sophisticated architecture market by offering a complete range of parquet, laminates, ESPC, skirting boards and floor completion accessories.

[pianaprofili.it](http://pianaprofili.it)



# A NEW LIVING CONCEPT

In the heart of the Dolomites, a five-star offer in the name of luxury, which has been enriched with a Penthouse of over 160 square meters

FRANCESCA FERRARI





Located in the heart of the Dolomites, in the San Cassiano in Alta Badia, the Rosa Alpina Hotel & Spa is part of The Leading Hotels of the World and boasts a 3 Michelin Star restaurant and a large SPA area renovated in 2018.

A five-star offer in the name of luxury, which has been enriched with a Penthouse of over 160 square meters, whose interior design project bears the studio's signature Milanese Vudafieri-Saverino Partners.

The property is located on the 4th floor of the Engelstrakt wing and consists of three suites, a large living room with windows facing the mountain, a fireplace, a bar and a kitchenette. Open spaces and bright, which thanks to the extraordinary view of the majestic peaks of the Dolomites, allow

you to experience nature and the surrounding landscape even when you are inside. Vudafieri-Saverino Partners have carried out a reinterpretation of tradition, putting in place an elegant mix between the location's identity, traditional materials and contemporary design elements. The design objects give a touch of colour and sophisticated elegance to rooms dominated by wood and traditional materials used in mountain building construction.

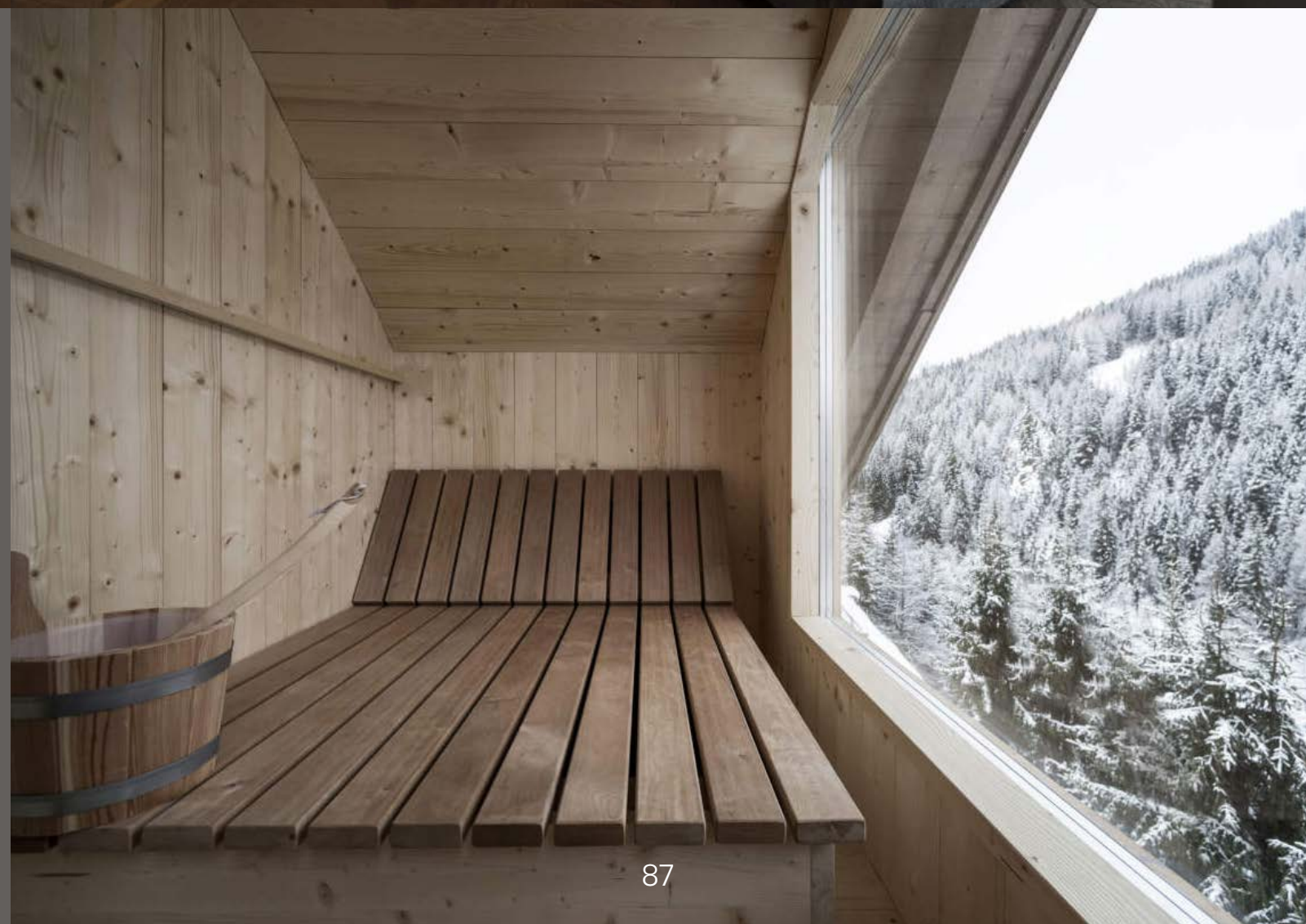
#### THE PRIVATE WELLNESS AREA

The pride of the new penthouse is the private wellness area that directly overlooks the mountain views, for a unique experience that satisfies body and spirit. An oasis of tranquility in which contemporary references are not lacking, given

in this case by refined chromatic games: in the rooms, in fact, prevails the white color, in contrast with the wood and with the peaceful but intense shades of green. The floor is a splendid larch parquet, which infuses warmth and a feeling of well-being and peace to all environments.

#### PLAN

- PROJECT: Vudafieri-Saverino Partners, Tiziano Vudafieri and Claudio Saverino
- DESIGN TEAM: Thomas Pedrazzini, Sabrina Sala
- PHOTO: Alex Filz





## ITALPROFILI

Dual System Evolution: one product, double solution. The first joist system suitable for the use with ceramic and decking flooring. Its particular shape allows it to be used for laying ceramic floors, with or without non-slip silencer profile and 2 or 4 mm adjustable joint element. By simply turning the joist 180 ° you get a flat surface, perfect for laying decking flooring. The Dual System Evolution joist is made of extruded aluminum to ensure maximum durability, reduced weight and high resistance.

Available in two variations:

- 15 mm: the lowest thickness available on the market
  - 25 mm: for an even higher load capacity
- Equipped with a quick coupling for fixing to the head of the support, Dual System Evolution by Italprofili is available for the Special, Special Light and Raise-up ranges of adjustable paving support systems.



# WOOD INSPIRATION

Resisting over time is our creed, which has guided us since 1976 in the design and manufacture of each product. The whole process takes place in our factory in the province of Venice: design, production, quality control and shipping. Our range always guarantees a high-level service and stable performance over time and it develops into 4 business units: adjustable paving support systems for raised floors, roofing accessories, accessories for foundations, accessories for cementitious waterproofing and liquid membranes.

[italprofili.com](http://italprofili.com)



# THE ANATOMY AND CHARACTERISTICS OF WOOD

Knowing the shape and placement of cells and the chemical composition of this precious raw material is important for understanding how it behaves

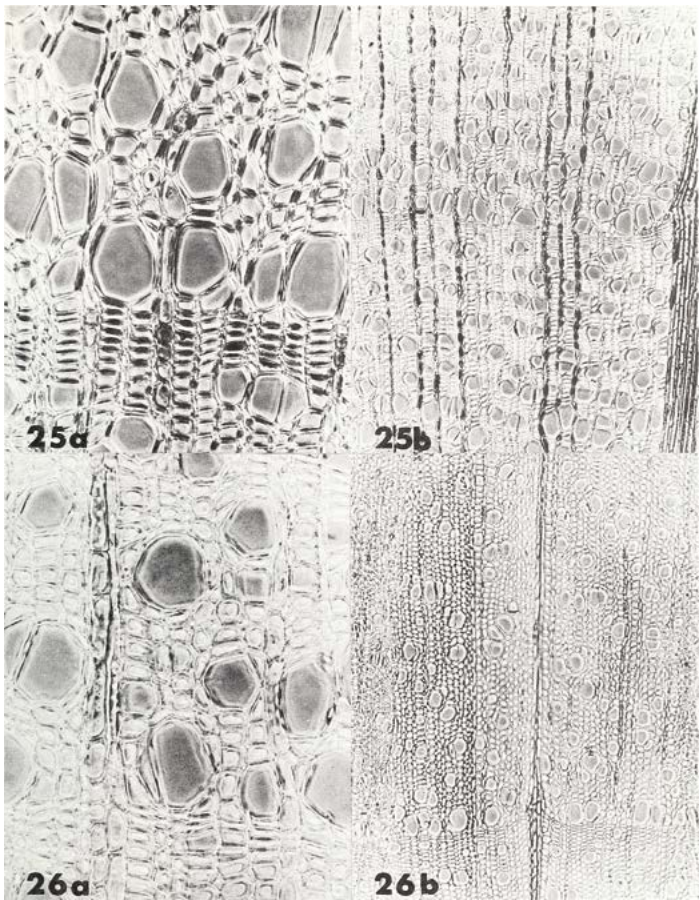
2

1 Comparative wood anatomy of some shrubs native to the Northern Rocky Mountains

2 Cross Section Butternut



1



All the main technical characteristics of wood have a close relationship to its anatomy (the shape and placement of its cells) and to its chemical constitution. These aspects differ among the different species of timber and can also vary a lot within a single species or a single trunk according to the environmental conditions where the tree grows. Aside from this variability, the trunk of a tree species is characterised by:

- bark, made up of dead, suberized cells;
- exchange, made up of a single layer of cells which, during the vegetative season produce wood towards the interior (with the function of mechanical support and conduction of raw sap) and phloem towards the exterior (which transports the sap);
- wood – mainly made up of dead cells, with only some particular areas where the cells are alive (sapwood parenchyma);
- medulla – made up of the primary

parenchyma (with the function of storing starch) situated corresponding to the long axis on which later the top vegetation of the trunk or branches will be found.

## ANATOMICAL SECTIONS OF WOOD

If we examine a section of a recently cut trunk, as well as the bark and medulla, we can see:

- Growth rings which have been produced by the changing seasons which influence the production of new layers of wood. In temperate zones, after a resting period caused by the low winter temperatures, the tree begins to produce early (or spring) wood whose cells are characterised by large vessels and relatively thin walls (so that conduction is increased to the maximum). In summer, the plant starts, more or less gradually, to

produce a denser, harder and more compact wood in which the cells have thicker walls and narrower cellular vessels. This wood is called late (or summer) wood. To the naked eye spring wood is lighter in colour than late wood and these alternations are what produce the annual growth rings. In tropical zones, where there is no winter and changing seasons which have light or heavier rain, the rings are less visible and do not necessarily correspond to annual growth.

- Sapwood and heartwood in wood species which have a different colour in the two sections. The sapwood, which is nearer the outside (near the bark), if it is

different, has a lighter colour and has both support and physiological functions for the plant (it contains a lot of starch). The heartwood on the other hand, which is of darker colour if it is differentiated, is made up entirely of lignified cells in which, over time, particular substances (tannins, terpenes...) are deposited which give the wood greater resistance to pathogenic agents (durability). The heartwood has the sole mechanical function of supporting the plant.

- Parenchymatic rays (also called medullary rays) are made up of wing-shaped cells reaching from the medulla to the bark. They perform the function of storing nutritional substances. They are more or less visible to the naked eye depending on the type of timber.



All the cells of wood are surrounded by a wall which is similar to a composite material in that a matrix (lignin) keeps the cellulose microfibrils together. This is a structure which reminds us of reinforced concrete! The lignin is the mortar and the iron bars are the cellulose microfibrils. Their organisation in different dimensional levels produces a series of characteristics (tension distribution, resilience, capacity to resist the spreading of cracks) which, all together, are very difficult to reproduce in even an advanced artificial compound.

#### UNDERSTANDING HOW TIMBER BEHAVES

Wood has three fundamental anatomical directions:

- Longitudinal or axial, coinciding with the axis on which the plant has grown in height;
- Radial, perpendicular to the longitudinal and intersecting the annual growth rings to make a right angle;
- Tangential, perpendicular to the longitudinal and at a tangent to the annual growth rings.

The properties of the timber all vary noticeably with the anatomical direction and its different behaviours must always be seen in this light. Other structural characteristics needed to define and understand the behaviour of the timber are:

- Fibres, also known as "thread", "vein" or "skin" etc. which indicate the longitudinal direction (that is the direction corresponding to the trunk axis) in which the cells are placed.

Fibres can be straight or deviated (sloping, waving, interlaced) and have a significant effect on the behaviour of the timber because they have a negative influence on working with it when they are wavy or interlaced and on its mechanical characteristics when they are sloping. When they are not straight, they can also negatively affect the wood-water relationship mentioned later;

- Grain, which indicates the size of the cells. The grain can be fine, with small cells regularly distributed as in the case of maple, coarse with very large cells next to others of much reduced size, as in the case of durmast, or medium as in Afzelia. The texture is important for considering what work is possible and the quality of the surface which can be obtained. Its effects on the finished product also need to be considered when other substances like glues and varnishes are applied.
- Veining, corresponding to the appearance due to the contrasting colours of the annual rings. The longitudinal surfaces of timber, if cut in a tangential direction, are commonly called "flamed", in contrast to those cut radially which are called "striped" just because of their appearance which originates from the growth rings. Veining is therefore only an aesthetic feature and, even though it is often confused with fibres, has no physical-mechanical effect on the timber behaviour.

*This text is taken from the FederlegnoArredo Manual "Parquet from planning to laying".*

# Contemporary Style

## Strength, Lightness, Character



**Promultiskirt  
SQUARE**



**Promultiskirt  
ROUND**



**Skirting  
7011**



**Skirting  
7016**



**Skirting  
40**

Profiles in waterproofing PVC foam, with a high abrasion resistance and suitable for all indoor use. They can be fixed to the wall using plastic supports with screw anchors and silicone. They are available in white, black, silver colour and a wide range of wood-effect finishes, it is possible to customise them with decoration for small quantity too. Inside and outside corners with end caps are also available in the same finish of the skirting.

**Promultiskirt Square / Round:** The skirting height is 100 mm, it can be cut to 80 and 60 mm heights thanks to the pre-incisions on the back.

**Skirting 7011:** Could be laid with suitable adhesive, we recommend **PROBAND FIX**, or else with nails.

**Skirting 7016:** Could be laid with suitable adhesive, nails, screws or using the pre-punched support fixed to the wall with screws every 57 cm. Its special section, that allows to cover a 16 mm perimeteral joint.

**Skirting 40:** Profile height 40 mm could be laid with suitable adhesive, we recommend **PROBAND FIX**, or else with nails.



**WIDE COLOUR RANGE**



**WHATERFROOF AND  
ABRASION RESISTANT**



**BESPOKE FINISHES**



**END CAPS, JOINTS AND  
CORNERS KIT**





# TELL IT TO THE MOON!



Phases of the moon and timber quality: man has realised for centuries that the quality of a timber is influenced by the period in which it is cut

FABIO BRAGA

I am always meeting building planning professionals who smile when the topic of the importance of the phases of the moon is raised. Sometimes I am stunned by how little they know of natural materials that have been used for centuries with great mastery by exceptional people who have handed down their knowledge and left an unequivocal and astounding heritage. Not only can trees reach an age which is hundreds of times greater than ours, but their timber can also last undamaged for an incredibly long time. Just think of the wooden temples in Asia which have resisted unscathed not just for centuries but for nearly two thousand years. Raised up by Buddhist monks and made of powerful tree trunks, these artistic monuments created by man are testimony to the possibilities hidden in trees. How is it that timber has become a material which can withstand

meteorological events for centuries? There are three things responsible for the quality of a particularly hard-wearing wood: first, the choice of a tree which has been grown well, second, the felling of the tree at the right moment and third the storing, drying and correct handling of the timber. In this article I would like to look at the topic of the correct period for felling a tree.

**THE RIGHT TIME TO FELL A TREE**

The time of year when the sap goes into a resting phase, like felling when there is a waning moon, are such important aspects that they make up the thread connecting man and tree, a thread which has stretched through time. From Julius Caesar through Pliny the Elder right down to Theophrastus, we have been told anecdotes and stories which say that timber for

building should be felled only with a waning moon. Even in Medieval and Renaissance times, it was known as the right moment for felling. This frequent reiteration of the same rule gave it great weight. However, there was no scientific proof until recently.

**SCIENTIFIC PROOF**

In one of the most renowned technical universities in Europe, the ETH in Zurich, a small group of researchers looked into the scientific evidence for this rule in 2003. Professor Ernst Zurcher was head of the research project whose objective was to examine in general the connection between the rhythms of nature and plants. It was observed that the tendency of beans to swell when put in water was not always equal, but varied according to the cycles of the moon. During the period of the experiment, the beans

absorbed more water under a crescent moon and clearly less when the moon was waning. The germination of seeds of various trees and plants were examined in relation to their dependence on the phenomenon of the phases of lunar cycles. This demonstrated that the speed of development of the seedlings and their average height after 4 months were all relative to lunar phases.

**THE MOON AND THE DIAMETER OF TREES**

Other studies showed that trees ‘pulsate’ exactly in line with tides, which, of course, are controlled by the moon. When the moon is growing, trunks become thicker. When it is waning, they again become thinner. The diameter of trees is greater or less depending on the cycles of high and low tides. Of course, we are talking about a difference of some hundredths

of a millimetre, but it is nevertheless measurable.

**‘LUNAR’ TIMBER**

To demonstrate the influence of the moon on timber, simulations of environmental conditions were decisive in tests which were then interpreted through studies. In some simulation tests in which a multiplicity of fungus spores were grafted onto the tree, the validity of the ancient rule of felling trees was analysed and for the first time it was demonstrated that timber felled according to the phases of the moon is more hard-wearing and resistant to environmental conditions than timber felled in the conventional way. Furthermore, an important aspect of the principle which causes this effect was brought to light. It was discovered that water in wood is very different from water on glass.

**WATER AND WOOD**

The link between water and wood cells, the movements of the internal flow of cells and inside the smallest capillary tubes are regulated by a multiplicity of physical influences, which mean that water can take on a gelatinous state and remain fluid up to -15°C. ‘Lunar timber’, felled under a waning moon, has more water trapped inside. This means that during the drying process, it will shrink more, reducing its size in a notable manner. In this way, the timber becomes denser and stronger and also more resistant to invasive fungi, insects or intense flames. The increase in density of ‘lunar timber’ is 5-7%, as has been shown in thousands of tests. From a technical point of view, this phenomenon represents a significant improvement over ‘non-lunar timber’.



## FRIULPARCHET

An oak with a natural tone, which shows all the grain of the wood, enhancing its peculiarities, thanks also to the herringbone laying technique. This installation method is nowadays increasingly used, both in the residential and, as in this case, in the commercial sector. For this prestigious and sought-after hairdressing salon of its kind, the client sought a product that could combine resistance over time and with a refined design. This is possible thanks to the Le Spine collection, in which various formats, colors and types give life to an infinite series of product combinations.



# WOOD INSPIRATION

History of Friulparchet starts in 1927 and it is the story of a family that for four generations has dedicated its life to discover all the secrets of wood processing and manufacturing of parquet. Traditional attention for details, research of the excellence finishes, careful selection of trees in the different origin countries, come from passion, from a perfection desire handed down from father to son. A main feature for the development of the company has been the attention paid constantly for innovation that has brought to the progressive development of technologically advanced manufacturing technologies. The advanced technologies together with the sensibility for development of the world of architecture and design, have become much more important compared with the past and have been realized in the proposal of prestigious and modern products ranges.

Friulparchet helps the preservation of the natural heritage of our planet, checking that the woods, that are used for its parquets, come from environmental-sustainable forests and that materials applied for gluing and finishes, are manufactured in respect to the most strictly norms for the health-safeguard.

[friulparchet.it](http://friulparchet.it)





# New European Industrial Strategy: “Building a stronger Single Market for Europe’s recovery”



The European Commission published last May its New Industrial Strategy. FEP closely follows all developments, including the revision of the Construction Products Regulation (CPR)

BY FEP

On 5 May 2021, the European Commission (EC) published its New Industrial Strategy which is in fact an update of the Industrial Strategy 2020. The Industrial Strategy issued last year was already setting a plan for a twin green and digital transition leading to sustainable competitiveness of the European sectors throughout their value chains and/or industrial ecosystems (one of the 14 ecosystems is construction to which parquet is attached). A really functioning Single Market as well as open

**THREE IMPORTANT DOCUMENTS**  
Three documents are accompanying the updated Industrial Strategy:

- The Annual Single Market report (1st edition), which looks at the impacts of the crisis on the 14 industrial ecosystems, including construction;
- An analysis of the EU’s strategic dependencies and capacities, which focuses on the specific issues of supplies observed at the beginning of the pandemic;
- Towards competitive and clean European

markets and level playing field are prerequisites in this regard. The day after the publication of the initial Industrial Strategy, the World Health Organisation (WHO) declared that Covid-19 was a pandemic. The lessons learned from the crisis and the need for more resilience and an accelerated green and digital transition pushed the EC to update its Industrial Strategy accordingly. The green and digital transition is inevitable. In the medium-term, all business activities will have to become

sustainable. Some old habits have been disrupted by the Covid-19 and will therefore accelerate the green transition. Circular economy principles and improved resource efficiency will also contribute to reducing dependencies and strengthening resilience in case of future crisis. On the other hand, digitalisation has supported the continuation of economic activities and is changing traditional patterns and the way business is conducted.

steel, which is a special report on one industrial sector supposed to play a key role in the green and digital transition.

**THE IMPORTANCE OF A SINGLE MARKET**  
We would like to focus here on the Annual Single Market report and the importance of this topic for the parquet industry. The Annual Single Market report analyses the challenges faced by 14 industrial ecosystems, including construction, through a set of Key

Performance Indicators (KPI). The analysis is based on publicly available data sources on economic developments, competitiveness, Single Market integration, SMEs, etc. The initiatives already undertaken to achieve the twin transition are also described. The EC is giving priority to the ecosystems and sectors that face the most important challenges to meet climate and sustainability goals, and whose competitiveness can be influenced by (their responses to) these challenges, such as energy-intensive industries





and construction, as well as to sectors harshly affected by the crisis, such as tourism and mobility. As an energy-intensive sector, steel has already be the subject of a specific report "Towards competitive and clean European steel" attached to the updated EC

Industrial Strategy. This gives us an example of what will be expected from our own wood-based sector. The pandemic has highlighted the need to ensure free movement of persons, goods and services in the Single Market and the need

to avoid disruptions. In order to find a structural solution to these issues, a Single Market Emergency Instrument will be developed by the EC early 2022. The crisis has also revealed that effective market surveillance is key. A well-functioning Single Market is a must to accelerate the recovery. While the EU will continue to support international cooperation, it should be in a position to combat unfair practices and foreign subsidies that undermine the level-playing field in the Single Market.

**AN EFFICIENT STANDARDIZATION SYSTEM**  
Global leadership in technologies also requires leadership in standard-setting. Same international standards help reduce adaptation costs and strengthen global value chains. For the EU to keep, and increase, its influence in setting global standards, its own standardisation system should be efficient.

This is why the EC will present a Strategy on Standardisation by the end of this year. This Strategy on Standardisation should help finding solutions to fast adoption of crucial standards as well as to the integration of the green and digital transition in the 14 industrial ecosystems. For instance, the revision of harmonised standards could consider, where appropriate, circularity requirements.

**THE REVISION OF THE CONSTRUCTION PRODUCTS REGULATION (CPR)**

It worth mentioning here the on-going revision of the Construction Products Regulation (CPR), which is of utmost importance for the parquet industry and the continuation of its important standardisation work. The revision of the CPR is now announced by the EC for the end of 2021/beginning of 2022. It will a.o. address environmental impacts, circularity, safety of construction products and adaptation to innovation and digitalisation. The FEP Technical Committee and its dedicated Core Groups on "Circularity" and "Product Category Rules" are obviously following closely the above-mentioned developments and will be ready once the measures will directly concern wood, wood-based products and the parquet industry.

**FEP**

The European Federation of the Parquet Industry (FEP) reunites European national parquet federations, parquet manufacturers and suppliers to the industry. It is the main body representing and defending the interests of the European parquet industries at all relevant levels. The primary goal of FEP is to strengthen and improve the position of wood flooring against other floor covering products as well as to enhance the growth, prosperity and stature of the European parquet manufacturing industry - thereby protecting its interests and reinforcing its image. The activities of FEP are situated in the areas of raw material supply, production, market and internal affairs. Typical examples of work items are:

- The collection of market data in FEP territory and beyond;
- The follow-up of relevant European legislation and standardisation;
- The publication of newsletters;
- The organisation of an annual European Parquet Congress;
- The initiation of market research related to parquet flooring;
- The promotion of personal contact and communication amongst its members.

**parquet.net**

WHAT  
DO  
YOU  
SEE?

**SUPERFACES**

L I T E

living in a materials world  
RIMINI EXPO CENTRE - ITALY  
**13<sup>TH</sup> - 15<sup>TH</sup> OCTOBER 2021**

The b2b marketplace dedicated to surfaces for interior, design and architecture. **Discover** the latest materials, **imagine** new applications, **create the living of the future.**

Organised by:  
**ITALIAN  
EXHIBITION  
GROUP**  
Providing the future



## ALMA FLOOR

Original, eccentric, unique: Geometrici Collection represents the ideal choice for those looking for a parquet with a strong personality, able to transform the whole environment. Innovative puzzle box and contrasts give life to unusual and refined shapes, that becomes the protagonist of the house.

In the picture the company combines the more classic Doghe collection, to the Onda of the Geometrici collection, characterized by more innovative shapes, both in the smoked treatment. The final effect is a dynamic and original environment.

*Photo: Cecilia Bordoni*

*Installation: Casa Parquet*

*Architect: Francesca Lattanzi*

WOOD  
INSPIRATION

Alma is one of the most renowned brands of wooden flooring and is well established in both the Italian that international markets thanks to the wide range of solutions offered. Alma combines the warmth and naturalness of wood with exclusive finishes and will enhance any space. A combination of the best raw materials and the latest trends in the world of parquet have created a series of collections with a unique style thanks to their appearance, the way they feel to the touch or the look they create.

**almafloor.it**





## PROGRESS PROFILES

To realize perfect outdoor floating floors from a height of 29 to 1000 mm, Prosupport Tube System is composed of 7 elements only and equipped with a great load resistance. For heights over 74 mm, it's recommended to insert the pipe of the desired height into the base, push it all the way and insert the ring; the screws have to be screwed on the base with the hollow side upwards for self-levelling heads up to 5% slope or upside down to have fixed heads. Prorail System guarantees a steady and resistant substructure providing to the installer all the necessary elements for the work.



# WOOD INSPIRATION

For 36 years Progress Profiles, world leader Italian manufacturer of technical and decorative finishing profiles and fixing/laying systems including membranes for construction and interior design, has been developing and patenting over 15,000 products and 18 systems. With an Headquarter in Asolo (TV) and three branches in the USA, in the UAE and in Spain, it exports to more than 80 countries worldwide.

[progressprofiles.com](http://progressprofiles.com)





22|25 NOVEMBER 2021 - fieramilano ITALY



#webuildthefuture

BIM & TECHNOLOGIES CONSTRUCTION & MATERIALS DOORS, WINDOWS & INDUSTRIAL CLOSURES BUILDING ENVELOPE & OUTDOOR



ITA  
ITALIAN TRADE AGENCY

promoted by



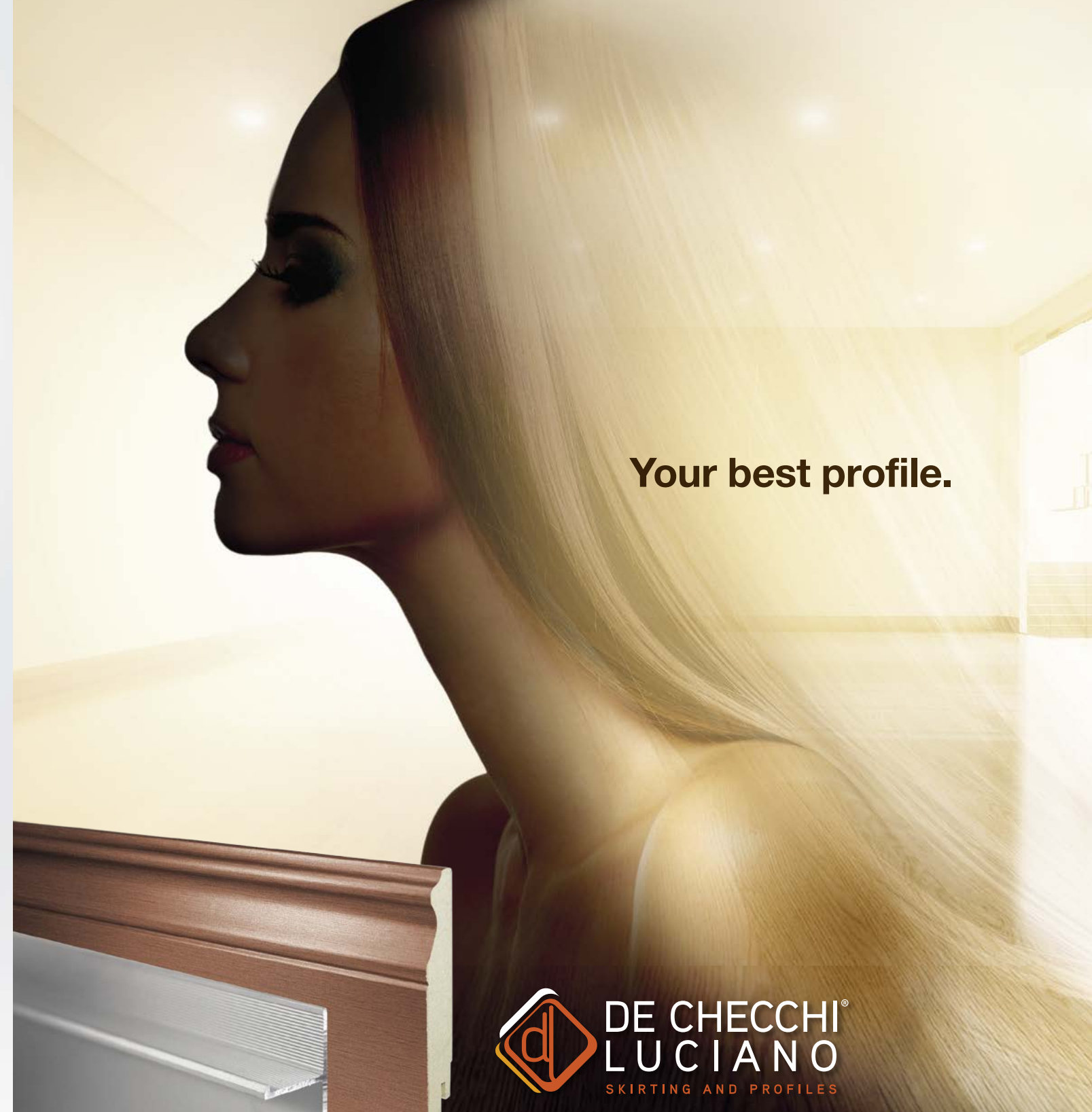
under the patronage of



f t i n madeexpo.it/en



Designed&Made  
inItaly



Your best profile.

DE CHECCHI  
LUCIANO  
SKIRTING AND PROFILES

UNYDECO®

Technical profiles for finishing  
flooring and coverings

www.dehecchiluciano.com  
www.unydeco.com





Color Collection,  
colours and surfaces  
for contemporary living

**kerakoll**