

I LOVE PARQUET

INTERNATIONAL

www.iloveparquet.com

n. 25

December 2020

*The fascination
of henningbone*



Your best profile.



UNYDECO®

Technical profiles for finishing
flooring and coverings



www.dehecchiluciano.com
www.unydeco.com

Corà //

coraparquet.it

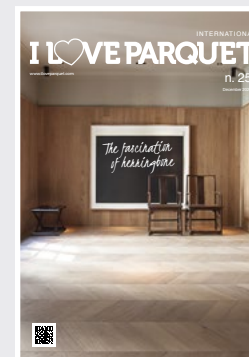
ULTRACOAT THE FIRST CHOICE TO PROTECT PARQUET



From the Mapei R&D laboratories, **Ultracoat** line: the system to protect parquet, suitable for floors subject to heavy traffic.

EVERYTHING'S **OK** WITH **MAPEI**

Learn more on mapei.com



COVER BY
Listone Giordano
listonegiordano.com

Editor
4PUNTOZERO Srl
Via Ressi, 28 - Milano
Tel. +39 02 39265461
Fax +39 02 45497579
info@4puntozero.it

Editor in chief
Federica Fiorellini
fiorellini@4puntozero.it

Editor
Davide Vernich
vernich@4puntozero.it

Editorial staff
Anna Baroni, Franco Bulian, Tito Franceschini, Eleonora Mazzola, Chiara Merlini, Clara Peretti

Art Direction
Cremonesi & Co Srl
info@robertocremonesi.it

Layout
Giuliana Garlaschelli
garlaschelli@robertocremonesi.it

Advertisement Director
Luciano Dorini
dorini@4puntozero.it

Accounting and Administration
Lara Papetti
lara@4puntozero.it

Secretariat
Jacqueline Davis
info@4puntozero.it



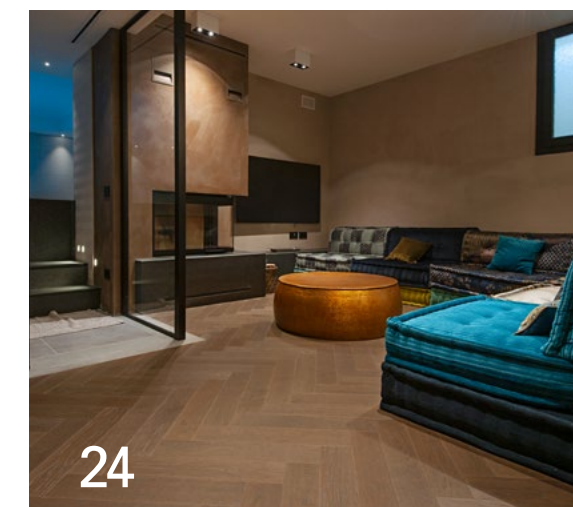
4puntozero srl, the authorised processor of data of those receiving this publication, points out that the purposes of such processing make it possible for this magazine and/or others it publishes to be sent which is to facilitate the update of technical information. Copyright for all material published in I Love Parquet International remains with 4puntozero srl

Supplement to I LOVE PARQUET Magazine N. 42, December 2020

I LOVE PARQUET

Contents

- 9 Editorial - Federica Fiorellini
- 10 Agenda - Davide Vernich
- 14 NewsRoom
- 18 Oh my wood! - Francesca Ferrari
- 20 A surprise in the basement - Tito Franceschini
- 24 Red Oak - Francesca Ferrari
- 26 Zygia racemose (Marblewood) - Gianni Cantarutti
- 28 Showcase I The fascination of Herringbone
- 38 Parquet is a sustainable choice for a climate-friendly future - By FEP
- 42 Formaldehyde in rough wood - Franco Bulian





Wood you like ?

The "Calibro" Collection comes from the idea of creating a line of Oak wood floors to meet the most different needs and tastes with a product that guarantees maximum versatility and stability. With its narrow section and the different installation patterns it allows to enhance even small-sized environments and, at the same time, to enhance the material in its natural colors and elegant finishes.



ORIGINAL PARQUET®
IL LEGNO DI QUALITÀ DAL MONDO



www.originalparquet.com

HQ - FACTORY via Dell'Artigianato 18
SHOWROOM via Del Lavoro 4
48011 Alfonsine (RA) - Italy
ph. +39.0544.80696



SIGNATURE
Rovere Bronzo Antico | Arrow
woodco.it

WOODCO
STORIE DI PARQUET

SUSTAINABLE YES, BUT HOW MUCH? NOW WE KNOW



I Love Parquet has had a close relationship with Fep (The European Federation of the Parquet Industry) for about a year. Every edition of the Fep journal talks about the efforts being made to promote the wood floor sector. I am very proud of this collaboration because I have followed and appreciated the federation's work for some time. Through the years it has been able to gain the respect

and just recognition of Brussels through its responsible, expert competence and it has worked for the common interest but, above all, has investigated the best strategies to use to increase the market share of our wonderful product.

Fep was one of the supporters of recent research commissioned by Cepi (The European Confederation of Paper Industries) to calculate the effect of timber and timber products as 'carbon absorbers'. I'll only mention one finding (you can find more details on page 38 of this edition): the total positive effect of timber and wood-based products on the climate is estimate at -806 tons of equivalent CO² per year (equivalent CO² is a unit of measurement which can weigh different greenhouse gas emissions with different climate-changing effects together) which corresponds to about 20% of all the

fossil emissions in the European Union.

To put it simply, products from forests have a very low carbon footprint, as well as reducing the demand for energy based on combustible fuels.

In short, all (or nearly all) of us know that timber is sustainable. It is completely recyclable, as its production, processing and disposal uses far less energy than any other type of building material and, most importantly, thanks to the combined effects of "carbon sink" (carbon absorption) and "carbon stock" (ability to treat carbon) it helps to reduce carbon emissions. However, we never knew how sustainable it was.

This research seems to me to be a formidable marketing tool. To be read and repeated to clients, partners and stakeholders as a mantra.



BAU Online
Online
13 - 15 January 2021
bau-muenchen.com

CORONAVIRUS, CLIMATE, URBAN, DEVELOPMENT

BAU Online's conference program from January 13 to 15, 2021 will be varied and rich in content. All sessions in the three conference panels will be guided by the key themes "Digital transformation", "Challenge of climate change", "Resources & recycling" and "Homes of the future." And the Covid-19 pandemic's effects on architecture and the construction industry will also be examined.

"One of our sessions is called 'Facing the future', which could also serve as general theme of the hour", explains Dr. Reinhard Pfeiffer, Deputy Chairman of the Board of Messe München. "BAU Online will provide valuable guidance in turbulent times. Together with our partners, we have put together a substantial program with many experts from the construction industry, science and politics." The program will consist of three pillars: Forum Future of Building, BAU TV, Studio Bund.

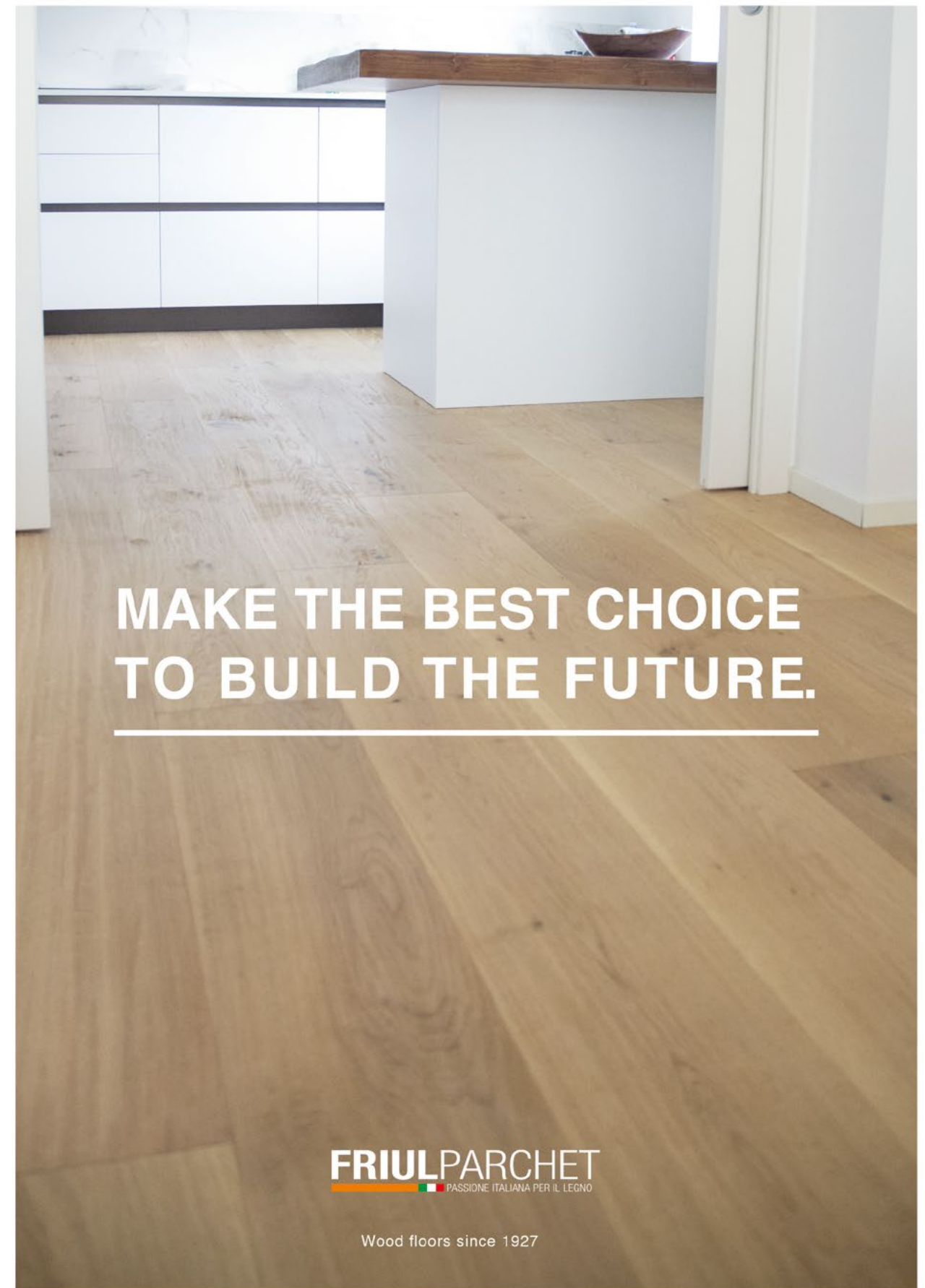


A New European Bauhaus
Online
Until March 2021
triennale.org

ABOUT EUROPEAN BAUHAUS

Using as a starting point a project of the European Commission, this cycle of digital conferences analyse the studies of Curators, Designers, scholars and Museum Directors from

European countries reflecting on topics of design, architecture, demography, new technologies and renewable energy to share proposals in this particular moment in European and world history. The online meetings, scheduled between November 2020 and March 2021, include appointments with various European nations.



**MAKE THE BEST CHOICE
TO BUILD THE FUTURE.**

FRIULPARCHET
PASSIONE ITALIANA PER IL LEGNO

Wood floors since 1927

It's been 15 years since we have started an awareness campaign focused on reforestation, from that moment our attention has been turned to eco-environmental problems and to the future of the green sources of our planet. Idea is very simple:
replant the same quantity of trees needed to produce our wood floors.



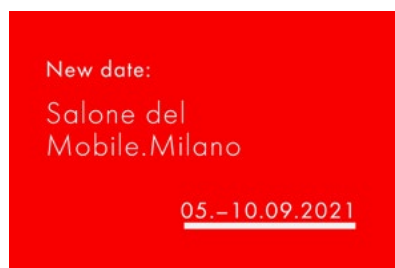
Domotex 2021

Deutsche Messe - Hannover
18 - 20 May 2021
domotex.de

POSTPONED

Responding to market requests, the date of the world's leading trade show for carpets and floor coverings in May has been brought forward by two days. Following the postponement of Domotex from January to May 2021, exhibitors from the D-A-CH region have expressed reservations about holding the event including the beginning of the Whitsun weekend.

Following renewed intensive discussions with our stakeholders and their concerns, the decision has now been taken: The next Domotex will take place from 18 - 20 May 2021 (Tuesday to Thursday). As already announced - Domotex is planning to hold a digital conference on January 15, 2021, the original trade show launch date. Further information will be available shortly.



Salone del Mobile.Milano 2021

Fiera Milano - Milano
5 - 9 September 2021
salonemilano.it

SEPTEMBER EDITION

Finally it's possible to know the dates, following lengthy and wide-ranging discussions between the Management of the Salone del Mobile and Fiera Milano, allocated the delicate task of finding the best possible solutions to enable the Salone del Mobile.Milano 2021 to go ahead, whilst guaranteeing safety in light of the ongoing pandemic. The sixtieth edition of the Salone will be held in 2021, not in April as is traditional, but from 5th to 10th September. President of the Salone del Mobile, Claudio Luti, had this to say: "Being able to hold the Salone next year is an absolute priority for all those of us whose lives revolve around design. We have tried very hard over the last few weeks not to make proclamations or announcements that might subsequently have to be denied or revised

in view of the evolving situation. Moving the dates of the Salone del Mobile is not just a matter of rejigging the calendar, it also has to consider the many days needed to set up and dismantle the various pavilions, which in turn have to fit in with the demands of many other fairs held in the Fiera Milano spaces. Now that we have achieved the best possible all-round solution, thanks to the collaboration of Fiera Milano, we are in a position to confirm the new date. We also believe that moving the fair to September will leave enough time for the ongoing acute phase of the pandemic to subside and that this will provide a real chance to kickstart design at global level. We all need the Salone in Milan". The 60th edition will bring together for the first time all the product categories, representing a special moment.



Spine Collection | Treatment Smoked

Giorio srl

info@almafloor.it - Tel +39 0173 976520

www.almafloor.it

[f](#) [t](#) [i](#) [n](#) [s](#) [g](#) [p](#) [a](#) [l](#) [m](#) [a](#) [b](#) [y](#) [g](#) [i](#) [o](#) [r](#) [i](#) [o](#)

Alma
Giorio® pavimenti in legno



BAUWERK GROUP: NAME CHANGE AND RELOCATION

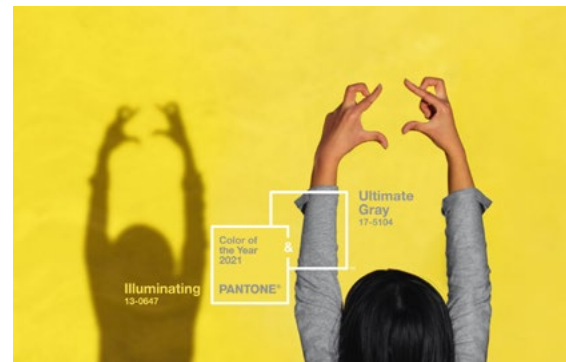
The Extraordinary General Meeting of Bauwerk Boen AG approved the name change from Bauwerk Boen AG to Bauwerk Group AG. The relocation of the headquarters from Wallisellen/ZH to St. Margrethen/SG was also approved. The Bauwerk Group sells its products under the well-known brands Bauwerk Parkett and Boen. The market development is designed for the respective sales channel and the geographic markets. The proven market presence of the two brands Bauwerk and Boen will be continued.

PANTONE SELECTS TWO SHADES AS ITS COLOURS OF THE YEAR FOR 2021

Pantone, the global color authority and provider of professional color language standards and digital solutions for the design community, announced 17-5104 Ultimate Gray and 13-0647 Illuminating, as the Pantone Color of the Year selection for 2021, two independent colors that come together to create an aspirational color pairing, conjoining deeper feelings of thoughtfulness with the optimistic promise of a sunshine filled day.

"The selection of two independent colors highlight how different elements come together to express a message of strength and hopefulness that is both enduring and uplifting, conveying the idea that it's not about one color or one person, it's about more than one. The union of an enduring Ultimate Gray

with the vibrant yellow Illuminating expresses a message of positivity supported by fortitude - said Leatrice Eiseman, Executive Director of the Pantone Color Institute - Practical and rock solid but at the same time warming and optimistic, this is a color combination that gives us resilience and hope. We need to feel encouraged and uplifted, this is essential to the human spirit."



SIGNATURE
Rovere Conchiglia | Monolith
woodco.it

WOODCO
STORIE DI PARQUET

FEP: RENOVATION IS DRIVING THE RECOVERY ON EUROPEAN PARQUET MARKETS



The Board of Directors of FEP - the European Federation of the Parquet Industry - met virtually on 8 October 2020 and discussed, amongst others, the parquet situation and the continuous impacts of the Covid-19 crisis on the European markets. A brief per country recap is provided in the table.



AUSTRIA

The situation has started to improve in May. Renovation continues to be the parquet consumption driver and supports the recovery. However, for the whole year, a slight decline of the market compared to 2019 is forecast.



FRANCE

After a restart of the consumption mid-May, the situation in France is now "neither bad, nor good". The contract business is significantly decreasing, but the impacts of this decrease will only be visible in 2 years as for the time being existing contracts are completed. DIY is performing well.



GERMANY

While the parquet market was subdued in April and May, the trends upturned during the summer and are now very positive in Germany and until the end of the year. New projects are decreasing but renovation is on an increasing path.



ITALY

Until August, the Italian market has recovered from the lock-down period, especially in the

south of the country which has been less affected last spring. Parquet consumption then slowed down in September but renovation is driving the market while contract business is lower. All the losses from spring will not be compensated but a stable result or a slight decrease only is expected for the year 2020 as a whole.



NORDIC CLUSTER

Nordic cluster parquet market has also been hit during spring. New buildings are down but renovation is strong, especially in Norway. In total, the market is improving.



SPAIN

While the Spanish market was recovering from the spring lock-down during the summer, the new Covid-19 related measures taken now could hamper this recovery. Renovation is doing well while construction of new buildings is stopped. The long-term economic impacts of the pandemic and the related public expenses are still to come. All in all, a slightly decreasing or a flat parquet market is expected for the year 2020 as a whole.



SWEDEN

Sweden has been an "island"

these last months. The parquet market is a bit down, with less investments, but this is due to structural changes and not a consequence of the pandemic. On the one hand, commercial and hospitality businesses are really challenging. On the other hand, renovation represents a strong market as people are investing in their homes (offices). No significant evolution of the situation is expected by the end of the year but the 4th quarter should be positive.



SWITZERLAND

After a flat 3rd quarter, especially in French and Italian speaking parts of the country, slightly positive trends are now observed on the Swiss parquet market. Renovation is the main driver but alternatives to wood solutions benefit the most. A stagnation is expected for the 4th quarter and the whole year 2020.



UK - STABLE

The country has been harshly hit by the pandemic and its market situation is comparable to the south of Europe with a recovery during the 3rd quarter. Nevertheless, the uncertainties related to the Brexit are impacting activities.

www.progressprofiles.com

A World of warmth and comfort
in respect with the nature.



PRODESO® HEAT SYSTEM

Progress Profiles innovative and patented **PRODESO® HEAT SYSTEM** for electrical walls and floors heating ensures pleasant warm and comfortable environment with short laying times and at low cost. The system can be used on all kinds of substrate thanks to the membrane uncoupling and waterproofing properties. Temperature and operating times can be controlled from a latest generation thermostat that also guarantees significant savings in energy costs. The system is quick and easy to install in all conditions and has an overall thickness of only 5.5 mm, far thinner than any alternative system. It is also maintenance free over time. This smart, responsible technology supports the growing demand for sustainable solutions and energy saving while also satisfying the needs of contemporary architecture and evolved home automation. A world of natural, warm wellbeing.



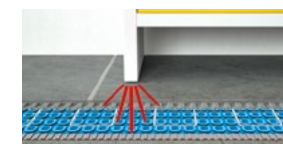
UNCOUPLING



VAPOR AND MOISTURE MANAGEMENT



WATERPROOFING



LOAD DISTRIBUTION

A New evolution
with the goal of flexibility, innovation and energy efficiency.



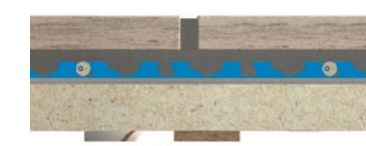
PRODESO® HEAT GRIP SYSTEM

The system is composed of three elements:

PRODESO® HEAT GRIP MEMBRANE, PRODESO® HEAT GRIP CABLE e PRODESO® HEAT GRIP THERMOSTAT KIT.

The polyethylene membrane with uncoupling, waterproofing and vapour management features has a 8,5 mm thickness and a thermowelded non-woven fabric on the back side, which guarantees the adhesion to the substrate.

The new membrane structure allows a perfect fixing of the heating cable and a crack-bridging ability 5 times more than the PRODESO HEAT. The cables of last generation are composed of many resistances, each one 60 cm long, in a parallel circuit. If the cable is damaged, only the broken resistance stops working but not the whole cable. The thermostat of last generation interfaces with Android and Apple devices, that is why it is possible to adjust all settings and time schedule using an application with internet connection as remote control.



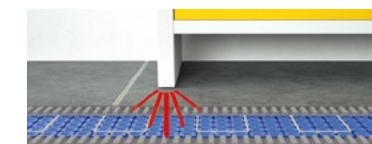
UNCOUPLING



VAPOR AND MOISTURE MANAGEMENT



WATERPROOFING



LOAD DISTRIBUTION





La bellezza dei nostri pavimenti in legno è speciale perchè 100% naturale.
Natura intatta e sana, fonte di profondo benessere.

The beauty of our wood floors is special because it is totally organic.
Untouched and healthy nature, source of deep wellness.

www.fiemme3000.it


FIEMME
3 0 0 0
pavimenti in legno biocompatibili

OH MY

WOOD!

RED XMAS

xmas sheeps

If it's true that black sheep are ever so important for a flock's solidarity and fearlessness - what were our Christmas decoration without one of them? The "sheep" can be placed individually inside its tree ball, however they are far more happy in a flock... Also available in innocent white.

designobject.it



New wave

This modern pendant light is made from two pieces of wood veneer, one set inside the other, that feature two distinct yet complementary colors. The two pieces of wood are bent and shaped into a seemingly endless, sinuous shape which produces the effect of solidity while simultaneously achieving an elegant structural balance.

ylighting.com

Jannis

Jannis is defined by a contemporary rigour that draws inspiration from the past, revealing its personality in the details: the wooden structure, lightweight to the eye but solid, holds the single seat cushion and the backrest, and is characterized by the metal feet with a brass finish of the feet. The front leg rises to define the thin profile of the armrest and closes in the semi-circular tip, again with a brass finish. The frame and legs are connected by steam-curved beech wood arches, an element of continuity with the heritage of Gebrüder Thonet Vienna.

gebruederthonetvienna.com



Wooden Dolls

The Wooden Dolls by Alexander Girard are a large family of wooden figures representing human and animal characters. Girard designed them in 1952 for his own use as decorative objects in his Santa Fe home. These originals, which are part of the Girard estate in the holdings of the Vitra Design Museum, served as models for the current re-editions. Precisely replicated down to the last detail, the many different Wooden Dolls are still fabricated and painted by hand today, just like the vintage pieces by Alexander Girard.

vitra.com



The Dots from Muuto

Designed by Norwegian designer Lars Tornøe, The Dots is a series of three different sized coat hooks available in different colours. They suit a wall with or without clothes and you can arrange them on your wall in the pattern you like.

muuto.com

Fly Agaric

The fantastic properties of this mushroom will fill the room with good vibes. Fly Agaric makes a collectable, or a gift for that special fun-loving person. Designed by Geckeler Michels.

sancal.com



Ademar Coffee Table

A solid structure combined with a sober design: Ademar is a new and elegant Table Collection proposed by Bross and designed by Giulio Iacchetti. It is possible to choose between natural oak, thermo-treated oak and Canaletto walnut top finishes.

bross-italy.com



all in 1 system



BalancePro

ALL IN 1 SYSTEM

**HEIGHTS FROM 25
TO 1025 MM
IN A SINGLE RANGE**



SCAN & GO
IMPERTEK.COM



**BALANCE PRO
SELF-LEVELLING HEAD
WITH STOP LEVELLING
SYSTEM**



ADJUSTABLE FROM THE TOP



**14 PRODUCTS
RANGE 25-1025 MM**



CAPACITY UP TO 1000 KG

Patented installation system for wooden floors.



National Walnut

Eco-sustainable, reusable, without glue, with high acoustic comfort.

Since 1950 we produce 100% Made in Italy wooden floors. Our patent Clip Up System[®] allows you to replace a single board in less than 30 seconds. Perfect for any public environment such as offices, shops, restaurants, schools, gyms, hotels, private houses, for raised or inspectionable floors. Available in different formats, wood species, surface finishes and customizable.

www.clipup.it

T +39 0438 580348 - info@garbelotto.it - www.garbelotto.it
CONCEPT STORE | Via Porta Tenaglia, 7N3 - Zona Brera, Milano



Exclusive of
GARBELOTTO
PAVIMENTI IN LEGNO



A SURPRISE IN THE BASEMENT

A sophisticated space with all the elements of the good life. An air-conditioned space with a modern kitchen, dining room, sitting room and Spa. And a high-class floor which brings everything together

TITO FRANCESCHINI

Elegance, harmony of colours and shapes, clever use of lighting and the magic of wood have made this a really unique space. We're in a villa near Lake Garda. Our photographs show a 'basement', but this description does not do justice to a space which is sophisticated with all the elements of the good life. An air-conditioned cellar to store and taste wine, a modern, functional kitchen for preparing meals for friends, with a dining area. A living room to relax in after swimming in the heated swimming pool or taking a sauna, which are part of the spa, separated from the rest of the space by glass walls.

The interior design has clean lines, broken up by colours which range over the sofas and the interior decor. The Firenze oak floor adds a classic and elegant note and is laid in Italian herringbone style with the characteristic right angle (90°) of the slats which make it up. Herringbone is one of the oldest floor-laying designs. It can even be found in the first century AD. The ancient Romans used it to lay the blocks of clay from which they built the roads. It started to be used for wood floors in the XVII century inside palaces and in the homes of upper class Italians.

**PLAN**

- Project: interior design studio
"Ligorio Paste architects"
 - Floors: Firenze colour oak laid in
Italian herringbone by Garbelotto
 - Laying: Italian herringbone, with
the characteristic right angle (90°)
- garbelotto.it**

Getting to know timber: *Zygia racemose* (Marblewood)

It was the French cabinetmakers who discovered the originality of its striations and introduced it into the luxury furniture market. A close-up of a truly fascinating tree

GIANNI CANTARUTTI

Bostamarinde (*Zygia racemose*), known internationally as Marblewood, is a high-quality timber species, in high demand, used in different furniture sectors and, in very exclusive places, as flooring and cladding.

The tree of this species grows in north-east South America (Guyana, Brazil, Venezuela) and can reach a height of about 30 metres and an average diameter of 60 centimetres. Once they had discovered it, it was the French cabinetmakers who took it from the French Guyana Amazon forest naming it 'bois serpent' and introduced it into the luxury furniture market. Its timber is golden yellow with brown striations, sometimes

bordering on black. This timber is sought-after by designers and architects for its appearance. In

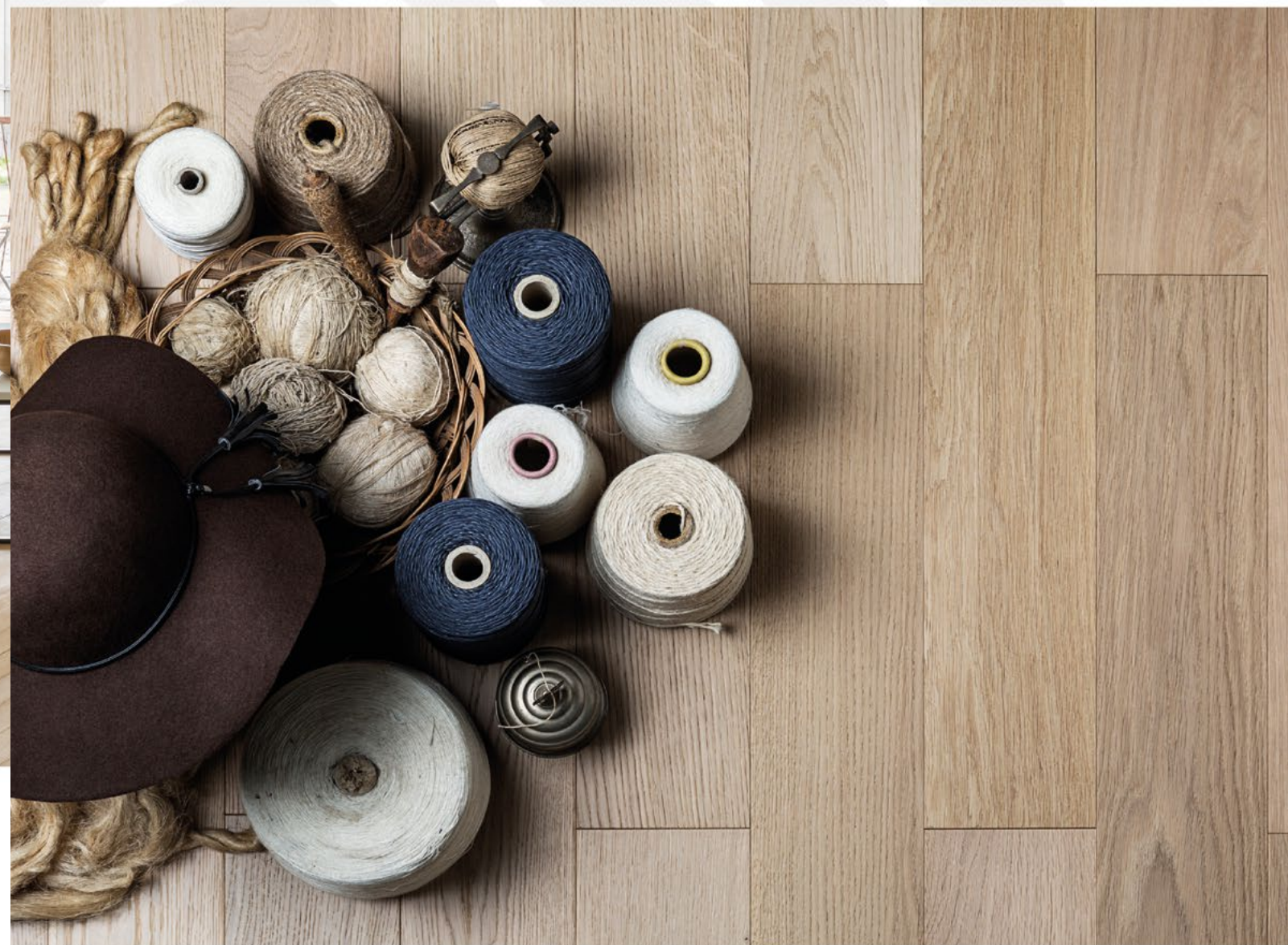
fact, its unique striations resemble some valued types of marble. Although it is not easy to work with because of the high density of the timber, after it has been 'cleaned', all the beauty of its shades of brown on a brownish yellow background is revealed and makes it the main protagonist of any environment where it is used. Matching it with other single colour materials makes highly decorative, elegant spaces.

PHYSICAL AND MECHANICAL CHARACTERISTICS

The main physical and mechanical characteristics of Bostamarinde are its high resistance to damage, its hardness and its specific weight (not too much for the ways in which it is used). When working with it, protective masks are highly recommended to avoid breathing in dust whose smell is like the smell of particularly stinky excrement. This is where it gets its local name of Bostamarinde. You can see examples of designer furniture in this wood in my world of wood xyloteca in San Giovanni al Natisone (Udine) as well as cross-sections of a particularly fascinating timber.

FIRST RENOVATION LACQUER

No sanding and multi-surfaces



Long lasting renovation without sanding down or replacing the floor

- Multi-surfaces: all wood floor finishes, laminated floors and PVC, vinyl, LVT floors
- Conceals scratches*, revives tarnished floors
- Single coat system
- Perfect adhesion, excellent grip, without primer
- High chemical and scratch-resistance
- 2-component with hardener

*Surface wear & tear: regular use and small scratches



MADE IN FRANCE

More information at
www.carver.it

CARVER
by **Blanchon**
GROUP

SINCE 1950
TAVAR
il legno

www.tavar.it

THE FASCINATION OF HERRINGBONE

NOCCIOLIEVE

Imagine opening the door and leaving behind the noise, chaos and rhythms of the city to immerse yourself in a safe, healthy and solid place. Your home.

This project, like all those of Fiemme Tremila, is inspired by the concept of well-being in the home environment. The floor must act as a natural connection between the woods and the house: in this case made by a beautiful chevron pattern in Nocciolieve essence, one of the thermowood oaks from the Luci di Fiemme collection.

Fiemme Tremila was born from a forward-looking vision: to offer a unique, natural and absolutely healthy and biocompatible product. Our dream and our promise are to surround our customers' homes with nature and enhance their well-being. For this reason we have thought of a product designed and manufactured to last a lifetime and only made with natural materials and procedures. A totally biocompatible product, articulated in rich and variable collections able to accommodate and satisfy different customers' styles and tastes.

fiemmetremila.it



LE SPINE COLLECTION

Le spine collection by Tavar is available in two different sizes and three patterns: italian herringbone (90°), french herringbone (45°) and hungarian herringbone (60°). These trendy and timeless patterns are ideal for both moderne and vintage design styles.

Tavar is a story about men, women and love for wood since 1950. Tavar strives to guarantee quality. The 100% made in Italy certification guarantees high technical standard. Tavar has always been attentive to designers and customers' needs. The history of the company is made professionalism, dedication and passion for wood.

In photo: french herringbone in natural european oak.

tavar.it



THE ECLECTIC FORMAT FOR SPECTACULAR PARQUET FLOORS

Arrow by Woodco is the new parquet format that allows you to free your imagination and give shape to infinite laying designs. Real tribute to simplicity and uniqueness, because no element is the same if not in size (45 x 450 x 14 mm), Arrow allows you to create not only Italian herringbone designs, but also combinations, weaves and customized modular patterns. Part of the Signature collection, dedicated to architects and interior design lovers, it is available in eight different colours, all made of fine brushed Slavonian Oak.

woodco.it

ETHICO CIPRO ARGENTO

Evo Garant Collection adds some new finishes in 2020 with silver and golden powder. A refined product like Ethico, whose finishes come from the natural reaction between salts and plant extracts, today lights itself up with precious powders to enhance the grain of the wood and emphasize its true nature!

Wood conformation is comparable to a fingerprint, as each table is different from the other. The particular "salt" treatment to which Ethico is subjected enhances its unique characteristics, the chromatic differences - even important ones - certify its authenticity, making use of a multitude of artificial materials that are "real wood"

coraparquet.it

100% MADE IN ITALY

In the heart of Trieste, a central European city, the choice of wooden floors fall on elegant and refined Natural Oak Noblesse® Herringbone, one of the oldest laying floor geometries. The wooden pieces inclined at 45 ° or 60 °, placed head to head, give a precious and classy floor that makes the rooms unique with its unmistakable design, creating a symphony of shapes, lights and materials. Garbelotto Noblesse® Herringbone is also available in Clip Up System installation. Parchettificio Garbelotto is a leader in the production of 100% made in Italy wooden floors. Since 1950, passion and style have sealed a creative union between innovation, art and design. All products are suitable for green building, eco-sustainable and certified, respect the environment and the raw materials come from controlled reforestation areas. The research and development department continually studies new proposals to meet the needs of the interior design world.

garbelotto.it



GAUTIER

The Gautier model in the Giorio Herringbone Collection by Alma, is reminiscent of the charm of old Parisian streets, where ancient and modern mingle to create new, elegant harmonies. Small 50 mm slats create a dense interlocking puzzle which highlights the most authentic characteristics of the wood. This parquet gives an original, sophisticated touch to any kind of space and can be matched with very different styles making it perfect for those who like to have a discreet originality.

almafloor.it



FASHIONS CHANGE, PARQUET STAYS

Wood has made a comeback and is an indisputable part of our homes. As well as being one of the few renewable and ecological raw materials, it adapts to every kind of living space, becoming a symbol which does not rely on fashions or seasons. Herringbone designs are becoming more and more popular, from the Italian 90° to the French 45° and the Hungarian 30° angles, they have the ability to make the most of any space.

Oak is the most sought-after wood because of its classic grain and shades as well as its suitability for tinting and colouring.

friulparchet.it



I CLASSICI COLLECTION

I.P.F. means research, tradition, care for details, passion and Italian creativity: the pre-finished wood floors, chevron, herringbone and the artistic compositions, combine style and design to 'green' living.

Along time I.P.F. has been improving the eco credentials of its flooring making changes to the materials used as well as their provenance: FSC European Oak has been sustainably harvested and all wood floors of the company are made with non-toxic adhesives and finishes.

In photo: European Oak 100% FSC, Chevron 10x90x610 mm, beveled, brushed, handlacquered for wax effect. Antibacterial finish, stain resistant, no additional maintenance, Class E1.

Collection: I Classici, color Aria.

ipfparquet.it



VELVET

Keeping up with the latest design trends, Bruno's collections include a wide selection of options suitable for herringbone 90° or chevron 45° laying. For this sophisticated bathroom, the client has chosen an elegant product from the collection VELVET, a 2 layer prefinished wood flooring with 4 mm thick top layer and CARB (California Air Resources Board) certified back support. Perfectly combining tongue and groove joints are the essential feature for planks to be laid as herringbone, and opting for a reliable artisan for the laying can make the difference too. Bruno always recommends and chooses skilled professionals artisan floor layers with longtime experience.

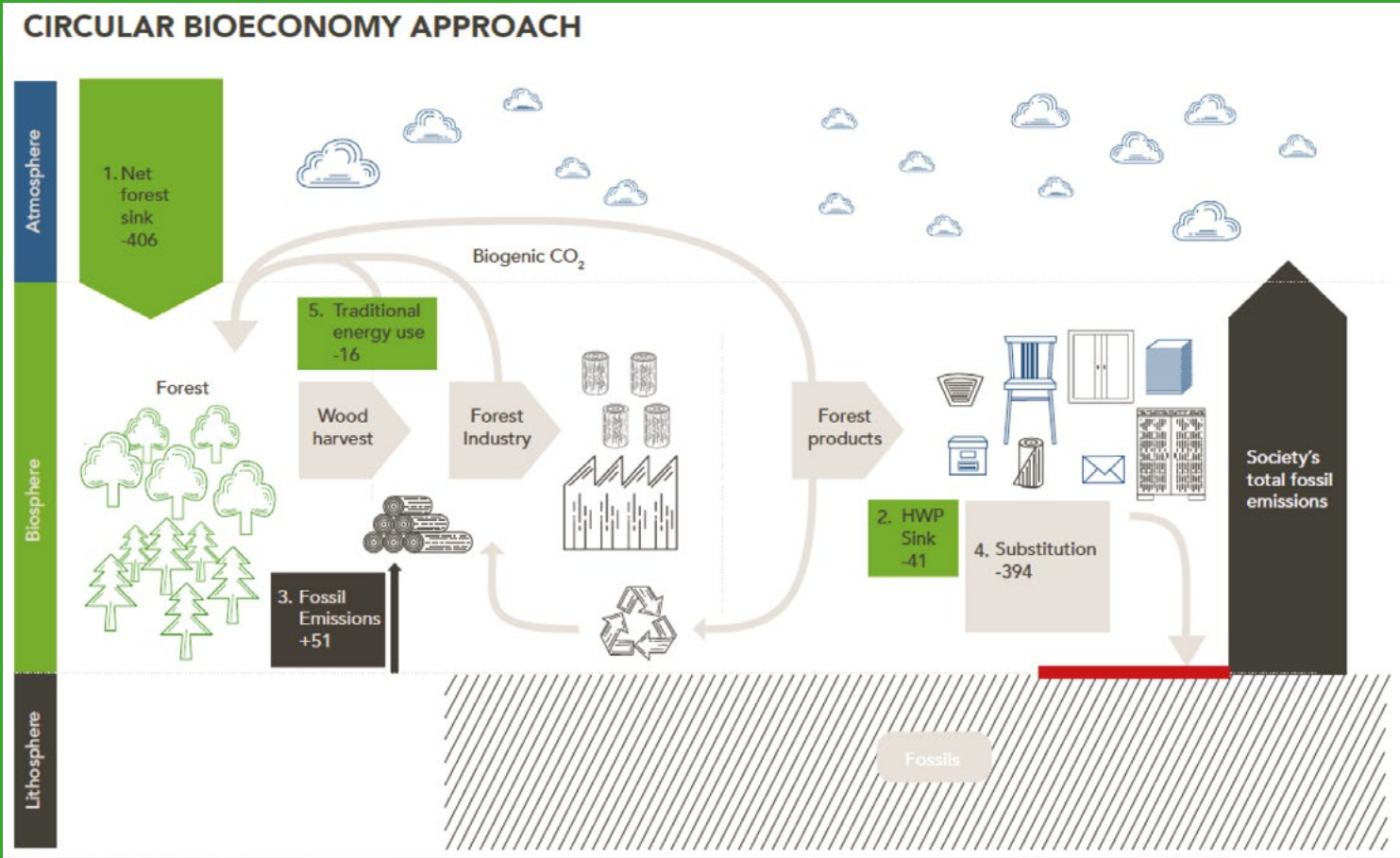
In photo: Velvet, Oak Natural, brushed, oil effect varnished - herringbone laying 90°

brunoparquet.it



What else do you need,
when you've found your perfect match?
Pedross veneer covered skirting boards -
the perfect match for your precious wood floor.

Parquet is a sustainable choice for a climate-friendly future



A new study calculates the CO₂ effect of wood and wood products as carbon sink, storage, and substitutes to fossil-based alternatives

BY EUROPEAN FEDERATION OF THE PARQUET INDUSTRY



Earlier this year (cf. FEP pages in I Love Parquet International n. 24, May 2020), we have briefly presented the: “EU Forest-Based Industries 2050: A vision of sustainable choices for a climate-friendly future” which highlights the positive role to be further played by wood and wood products in tackling climate change. As other Forest-Based and Woodworking Industries European associations, FEP has been involved in the preparation of this Vision and is one of the supporting organisations. Within this framework, FEP is also a supporter of the

new study commissioned by Cepi - the Confederation of European Paper Industries - and called “EU Forest-Based Industries 2050: CO₂ effect calculation supporting sector’s vision of sustainable choices for a climate-friendly future” (“Climate effect of the forest-based sector in the European Union” by Dr Holmgren, former Director General of the Centre for International Forestry Research, Sweden).

STUDY’S EXECUTIVE SUMMARY

The European forests and the Forest-Based sector provide integrated solutions

to the global climate challenge on a very large scale. More specifically, the overall and positive climate effect is estimated at -806 million tons of CO₂ equivalent annually (CO₂e/yr). This corresponds to approx. 20% of all fossil emissions in the European Union.

The overall climate effect is calculated as a sum of:

- The increased carbon storage in forests (-406 Mt CO₂e/yr) and in wood products (-41 Mt CO₂e/yr) for a total of -447 Mt CO₂e/yr (net carbon sink),
- Fossil emissions caused in the forest sector value

chain: +51 Mt CO₂e/yr,

- Prevented fossil emissions by substituting fossil-based materials and fossil energy: industrial products -394; traditional energy -16; for a total of -410 Mt CO₂e/yr.

The key to appreciate the

large contributions of forests and the Forest-Based sector is the perspective of an integrated and circular bioeconomy. CO₂ is removed from the atmosphere in very large quantities and stored in growing forests. The carbon eventually circulates back

into the atmosphere to close the loop. Part of this carbon is stored, for a longer or shorter period, in a variety of forest products before re-entering the natural biogenic carbon cycle.

Forest products have a very low climate footprint and moreover they reduce demand for products and energy that are based on fossil fuels. This prevention of fossil emissions, or substitution effect, is well known but has not previously been visualized and quantified at the European level. Existing climate reporting and climate policies are not structured to

Net sink	-447 Mt CO ₂ e/yr
Fossil emissions	+51 Mt CO ₂ e/yr
Substitution	-410 Mt CO ₂ e/yr
Total	-806 Mt CO ₂ e/yr 20 % of all fossil emissions in the European Union

EUROPEAN FOREST DEVELOPMENTS 1990-2015

8 % increase in forest area

- twice the combined size of Belgium and the Netherlands
- corresponding to the area of 1.500 football pitches per day

40 % increase in growing stock

- from 125 to 160 m³/ha
- 6 bn m³ stock increase, +240 Mm³/yr

highlight such cross-sectorial effects. By providing a complete analysis of the climate effects of the European Forest-Based sector, this study aims to support the policy dialogue towards effective climate action.

Viewing the Forest-Based sector as a circular bioeconomy may open up debate on how to reinforce sinks and carbon storage in forests, while at the same time enhancing how forest products and bioenergy provide climate solutions. European forest resources

continue to expand both in standing volume and annual growth, which may offer further potentials.

MAKE THE FOREST-BASED INDUSTRIES' VISION FOR SUSTAINABLE CHOICES A REALITY

The study reinforces the commitment of the Forest-Based Industries to provide the most competitive and sustainable net-zero carbon solutions by:

- Substituting CO₂-intensive raw materials and fossil energy with forest-based alternatives,

- Eradicating waste and boosting recycling with ambitious sector targets for material collection and recycling for all wood-based products,
- Driving resource efficiency and enhancing productivity in all areas including materials, manufacturing and logistics.

As the Forest-Based Industries (F-BI) can meet the society's current and future needs with non-fossil materials, they anticipate a growing demand for wood and wood-based products that they expect to be translated into F-BI market growth of 3% annually. The study has been already communicated to the relevant Directorates-General of the European Commission to be considered in the debates on the EU Green Deal, Climate Pact, Target 2030, New Circular Economy Action Plan, Sustainable Products Initiative, Green Recovery, Biodiversity Strategy, Forest Strategy... It will be officially launched in September and used, together with the Vision 2050 issued earlier this year, during the EU Green Week and the EU Raw Material Week to be held in October and November 2020. The study is available on request to the FEP secretariat - info@parquet.net.

ABOUT FEP

The European Federation of the Parquet Industry (FEP) reunites European national parquet federations, parquet manufacturers and suppliers to the industry. It is the main body representing and defending the interests of the European parquet industries at all relevant levels. The activities of FEP are situated in the areas of raw material supply, production, market and internal affairs. Typical examples of work items are: The collection of market data in FEP territory and beyond; The follow-up of relevant European legislation and standardisation; The publication of newsletters; The organisation of an annual European Parquet Congress; The initiation of market research related to parquet flooring; The promotion of personal contact and communication amongst its members.

parquet.net

Wood. Dance to a different tune.



In defence of the original.

Wood used in building comes from forests with controlled timber felling. It is a completely renewable material which requires very low levels of energy in the production processes. A wood floor helps to maintain an ideal micro-climate inside the house, softens the falls of those just learning to walk and can be restored an infinite number of times.

Choose a wood floor.
Sounds like music to your ears?

FORMALDEHYDE IN ROUGH WOOD

The important thing about this substance
is its 'ubiquity'. Catas research

FRANCO BULIAN

I have often been concerned with formaldehyde and have written many technical and informative articles about it. But maybe I have never mentioned one rather important aspect of this substance, its 'ubiquity'. What does the word ubiquity mean and what has it got to do with formaldehyde? Ubiquity simply means 'to be present everywhere' and formaldehyde really does have the characteristic of being found a little everywhere. Perhaps it's not well known that formaldehyde is one of the most common substances in the immense interstellar spaces of the universe and that it has also been detected in the atmospheres of some planets near the Earth like Venus and Mars. However, a bit nearer to us, we find that formaldehyde is easily formed by common combustion processes and some research shows its specific formation in conifer forests through photochemical reactions involving some terpene based compounds emitted

by the trees themselves. But formaldehyde's ubiquity is even greater as it is also present inside us as it is a by-product of some of our body's metabolic processes. So, even though in very low doses, formaldehyde can be found even inside our cells and our blood.

FORMALDEHYDE AND SOLID WOOD

Solid wood also contains formaldehyde, although in fairly small quantities, but natural formaldehyde can be detected and measured in all wood based materials. Various studies have been carried out about this and have shown that formaldehyde is formed from the main components of wood (cellulose, hemicellulose and lignin) as well as its extractives. The concentrations found vary depending on the species of plant and on various other factors including, for example, drying process temperatures, the time taken for these processes and the initial and final humidity of the wood. The quantity of formaldehyde measured in

CATAS: WHO WE ARE

"Since the foundation of Catas, more than 50 years ago, we have the safety and the quality of raw materials and finished products to our heart: every day in the operating centres of San Giovanni al Natisone (Udine) and Lissone (Monza) we carry out chemical analysis, physical and mechanical tests on raw materials, components and finished products of the wood, furniture and building industry. Thanks to our expertise and specialization we are considered the biggest European laboratory for testing and for applied research in the wood and furniture sector".

Main activity areas:

- Laboratory tests
- Product certification
- Training

CATAS numbers:

- 10.000 m2 laboratory surface
- More than 1.300 Catas Members
- 2 operating centres: San Giovanni al Natisone (UD) and Lissone (MB)
- More than 50.000 test/year
- More than 50 experts: wood technicians, chemists, biologists, engineers, mathematicians and physicians



solid wood is also influenced by the time lapsed between the drying and the measuring as well as by the intermediate storage conditions. In the above-mentioned studies, measuring was carried out both in terms of content (measuring done by the ISO 12460-5 perforator method) and emissions measured in a chamber (EN717-1). In the table with this article, we show the values obtained in some of the studies mentioned carried out on different species of wood after drying. Minimum and maximum values are

shown with reference to the two wood families conifers and deciduous trees. The figures obtained are certainly very low considering, for example, that the limit for class E1, legally obligatory in Italy, is 0.1 ppm in the chamber and 8mg/100g with the perforator.

CONIFERS, DECIDUOUS TREES AND HEAT-TREATED WOOD

Another thought-provoking point is the tendency to find a greater quantity of formaldehyde in conifers than in deciduous trees, although there are

contradictions to this in the literature. This variability is probably due to the influence of the many above-mentioned factors, as well as the uncertainty of the measurements when taken for extremely small values. Some Catas studies show also that heat-treated wood tends to have formaldehyde emissions higher than non-treated wood, because of, one would think, the decaying effect of the heat on some of the components, leading to the formation of formaldehyde as well as some other volatile substances.

Formaldehyde: minimum and maximum values found in conifers and deciduous trees after drying

Species	Chamber (EN 717-1)	Perforator (ISO 12460-5)
	Ppm	mg/100 g
CONIFERS	0,003 – 0,005	0,071 - 0,086
DECIDUOUS TREE	0,003 – 0,004	0,034 – 0,051



WOOD CANNOT BE ‘FORMALDEHYDE FREE’ (AND THIS IS OK)

In conclusion, the ubiquity of formaldehyde, the theme of this article, also evidently includes wood where it can be found naturally, independently of the industrial processes which the wood might subsequently undergo. This finding necessitates reflection on its danger and on the consequent

limitations. As shown above, it is not possible to expect or look for a material which does not contain formaldehyde, or, in other words has zero formaldehyde content. This is certainly not possible for wood-based products since they contain natural formaldehyde as mentioned above. Slogans like ‘formaldehyde free’ need to be looked at carefully, both to check on

their veracity but also so as not to exaggerate this topic and provoke negative perceptions of everything to do with wood and furniture. In fact, in the long term, the market may start to consider the natural presence of formaldehyde in rough wood as a negative factor when compared with other materials and therefore lose faith in all the products in our sector.

BIBLIOGRAPHY

- B. Meyer, C. Boehme, Formaldehyde emission from solid wood, Forest Prod. 47, 45–48, 1997.
- M. Shafer, E. Roffael, On the formaldehyde release of wood, Holz als Roh und Werkstoff 58, 259-264, Springer Verlag, 2000.
- W. Choi, I. C. Faloon, N. C. Bouvier-Brown, M. McKay, A. H. Goldstein, J. Mao, W. H. Brune, B. W. LaFranchi, R. C. Cohen, G. M. Wolfe, J. A. Thornton, D. M. Sonnenfroh, and D. B. Millet, Observations of elevated formaldehyde over a forest canopy suggest missing sources from rapid oxidation of arboreal hydrocarbons, Atmos. Chem. Phys., 10, 8761-8781, 2010 www.atmos-chem-phys.net.
- M. Böhm, M. Z.M. Salem, J. Srba, Formaldehyde emission monitoring from a variety of solid wood, plywood, blockboard and flooring products manufactured for building and furnishing materials, Journal of Hazardous Materials 221-222, 2012.